

Link-Belt Speeder

# LS-118

60-Ton Crawler Crane

**GUAY**



H17.05.22  
hydro-crane



# Link-Belt® LS-118 lifting crane capacities

PCSA Class 10-232  
Refer to Notes page 3

**Boom** — tubular; 44" x 54" (1.11 m x 1.37 m) with open throat top section, 1¼" (31.75 mm) dia. boom pendants, hydraulic retractable high gantry, boom live mast, and with boom midpoint suspension pendants (as required).

**Crawler** — 12' 6" (3.81 m) gauge extended, 8' 11" (2.72 m) retracted; 17' 0" (5.18 m) over-all length.

**Counterweights** — 12,200# (5,534 kg) ctwt. "A" or 46,000# (20,866 kg) ctwt. "AB".

Length	Boom					Side Frames Extended				Side Frames Retracted	
	Radius		Angle	Boom Point Height $\Phi$		Ctwt. "A"		Ctwt. "AB"		Ctwt. "A" Only	
	Feet	Meters	Degree	Feet	Meters	Pounds	Kilograms	Pounds	Kilograms	Pounds	Kilograms
40' (12.19 m)	10	3.05	81.7	45' 1"	13.74	98,900*	44,861*	120,000*	54,432*	65,700	29,802
	11	3.35	80.2	45' 0"	13.72	91,000*	41,278*	110,700*	50,214*	55,200	25,039
	12	3.66	78.8	44' 9"	13.64	80,100	36,333	102,600*	46,539*	47,500	21,546
	13	3.96	77.3	44' 7"	13.59	67,800	30,754	95,500*	43,319*	41,700	18,915
	14	4.27	75.8	44' 3"	13.49	58,700	26,626	89,400*	40,552*	37,000	16,783
	15	4.57	74.4	44' 1"	13.44	51,700	23,451	83,900*	38,057*	33,200	15,060
	20	6.10	66.7	42' 3"	12.88	31,900	14,470	61,200	27,760	21,600	9,798
	25	7.62	58.7	39' 8"	12.09	22,600	10,251	44,200	20,049	15,700	7,122
	30	9.14	49.9	36' 1"	11.00	17,200	7,802	34,200	15,513	12,000	5,443
	35	10.67	39.7	31' 1"	9.47	13,700	6,214	27,800	12,610	9,600	4,355
40	12.19	26.5	23' 4"	7.11	11,200	5,080	23,200	10,524	7,800	3,538	
50' (15.24 m)	12	3.66	81.0	54' 10"	16.71	80,400	36,469	102,500*	46,494*	47,700	21,637
	13	3.96	79.9	54' 9"	16.69	68,000	30,845	95,400*	43,273*	41,800	18,960
	14	4.27	78.7	54' 7"	16.64	58,900	26,717	89,200*	40,461*	37,100	16,829
	15	4.57	77.5	54' 4"	16.56	51,800	23,496	83,800*	38,012*	33,300	15,105
	20	6.10	71.6	53' 0"	16.15	32,000	14,515	61,300	27,806	21,700	9,843
	25	7.62	65.4	51' 0"	15.54	22,700	10,297	44,200	20,049	15,700	7,122
	30	9.14	58.9	48' 4"	14.73	17,300	7,847	34,300	15,558	12,100	5,489
	35	10.67	52.0	45' 0"	13.72	13,800	6,260	27,800	12,610	9,600	4,355
	40	12.19	44.3	40' 6"	12.34	11,300	5,126	23,200	10,524	7,800	3,538
	50	15.24	23.7	25' 7"	7.80	8,000	3,629	17,200	7,802	5,400	2,449
60' (18.29 m)	15	4.57	79.6	64' 7"	19.68	51,900	23,542	83,600*	37,921*	33,300	15,105
	20	6.10	74.7	63' 4"	19.30	32,000	14,515	61,400	27,851	21,600	9,798
	25	7.62	69.7	61' 9"	18.82	22,700	10,297	44,200	20,049	15,700	7,122
	30	9.14	64.5	59' 8"	18.19	17,300	7,847	34,300	15,558	12,000	5,443
	35	10.67	59.1	57' 1"	17.40	13,700	6,214	27,800	12,610	9,500	4,309
	40	12.19	53.4	53' 8"	16.36	11,200	5,080	23,200	10,524	7,800	3,538
	50	15.24	40.3	44' 3"	13.49	8,000	3,629	17,200	7,802	5,400	2,449
60	18.29	21.6	25' 7"	7.80	5,900	2,676	13,400	6,078	3,800	1,724	
70' (21.34 m)	20	6.10	77.0	73' 9"	22.48	31,900	14,470	61,300	27,806	21,600	9,798
	25	7.62	72.7	72' 4"	22.05	22,600	10,251	44,200	20,049	15,600	7,076
	30	9.14	68.4	70' 7"	21.51	17,200	7,802	34,200	15,513	11,900	5,398
	35	10.67	63.9	68' 4"	20.83	13,700	6,214	27,700	12,565	9,500	4,309
	40	12.19	59.3	65' 8"	20.02	11,200	5,080	23,100	10,478	7,700	3,493
	50	15.24	49.1	58' 8"	17.88	7,900	3,583	17,100	7,757	5,300	2,404
	60	18.29	37.2	47' 9"	14.55	5,800	2,631	13,300	6,033	3,800	1,724
	70	21.34	20.0	29' 6"	8.99	4,400	1,996	10,700	4,854	2,700	1,225
80' (24.38 m)	20	6.10	78.6	84' 0"	25.60	31,900	14,470	61,300	27,806	21,500	9,752
	25	7.62	74.9	-82' 9"	25.22	22,500	10,206	44,100	20,004	15,500	7,031
	30	9.14	71.2	81' 3"	24.77	17,100	7,757	34,100	15,468	11,800	5,352
	35	10.67	67.4	79' 4"	24.18	13,600	6,169	27,600	12,519	9,300	4,218
	40	12.19	63.4	77' 1"	23.49	11,100	5,035	23,000	10,433	7,600	3,447
	50	15.24	55.1	71' 2"	21.69	7,800	3,538	17,000	7,711	5,200	2,359
	60	18.29	45.8	63' 10"	19.46	5,700	2,586	13,200	5,988	3,700	1,678
	70	21.34	34.7	51' 1"	15.57	4,300	1,950	10,600	4,808	2,600	1,179
	80	24.38	18.7	31' 2"	9.50	3,200	1,452	8,700	3,946	1,800	816
90' (27.43 m)	20	6.10	79.9	94' 2"	28.70	31,800	14,424	61,200	27,760	21,400	9,707
	25	7.62	76.6	93' 1"	28.37	22,400	10,161	44,000	19,958	15,400	6,985
	30	9.14	73.3	91' 9"	27.97	17,000	7,711	34,000	15,422	11,700	5,307
	35	10.67	70.0	90' 1"	27.46	13,500	6,124	27,500	12,474	9,200	4,173
	40	12.19	66.6	88' 1"	26.85	11,000	4,990	22,900	10,387	7,400	3,357
	50	15.24	59.4	83' 0"	25.30	7,700	3,493	16,900	7,666	5,100	2,313
	60	18.29	51.7	76' 2"	23.22	5,600	2,540	13,100	5,942	3,500	1,588
	70	21.34	43.0	67' 11"	20.42	4,200	1,905	10,500	4,763	2,500	1,134
	80	24.38	32.6	54' 1"	16.48	3,100	1,406	8,600	3,901	1,700	771
	90	27.43	17.6	32' 9"	9.98	2,300	1,043	7,100	3,221	1,000	454

⊙ Measured from center of boom head sheave to ground.

(continued)

# LS-118 lifting crane capacities

Refer to Notes page 3

Length	Boom					Side Frames Extended				Side Frames Retracted	
	Radius		Angle	Boom Point Height $\Phi$		Ctwt. "A"		Ctwt. "AB"		Ctwt. "A" Only	
	Feet	Meters	Degree	Feet	Meters	Pounds	Kilograms	Pounds	Kilograms	Pounds	Kilograms
100' (30.48 m)	25	7.62	78.0	103' 4"	31.49	22,300	10,115	43,900	19,913	15,200	6,895
	30	9.14	75.1	102' 2"	31.14	16,900	7,666	33,900	15,377	11,600	5,262
	35	10.67	72.1	100' 8"	30.68	13,300	6,033	27,400	12,429	9,100	4,128
	40	12.19	69.0	98' 10"	30.12	10,800	4,899	22,800	10,342	7,300	3,311
	50	15.24	62.7	95' 6"	29.11	7,500	3,402	16,800	7,620	4,900	2,223
	60	18.29	56.1	88' 7"	27.00	5,500	2,495	13,000	5,897	3,400	1,542
	70	21.34	48.9	80' 10"	24.64	4,000	1,814	10,400	4,717	2,300	1,043
	80	24.38	40.7	70' 9"	21.56	3,000	1,361	8,500	3,856	1,500	680
	90	27.43	30.9	56' 10"	17.32	2,200	998	7,000	3,175	—	—
	100	30.48	16.7	34' 3"	10.44	1,500	680	5,900	2,676	—	—
110' (33.53 m)	25	7.62	79.1	113' 7"	34.62	22,200	10,070	43,800	19,868	15,100	6,849
	30	9.14	76.4	112' 6"	34.29	16,800	7,620	33,800	15,332	11,400	5,171
	35	10.67	73.7	111' 2"	33.88	13,200	5,988	27,300	12,383	9,000	4,082
	40	12.19	71.0	109' 7"	33.40	10,700	4,854	22,700	10,297	7,200	3,266
	50	15.24	65.4	105' 7"	32.18	7,400	3,357	16,600	7,530	4,800	2,177
	60	18.29	59.5	100' 4"	30.58	5,300	2,404	12,900	5,851	3,200	1,452
	70	21.34	53.3	93' 8"	28.55	3,900	1,769	10,200	4,627	2,200	998
	80	24.38	46.4	85' 3"	25.98	2,900	1,315	8,300	3,765	1,400	635
	90	27.43	38.7	74' 4"	22.66	2,100	953	6,900	3,130	—	—
	100	30.48	29.4	59' 7"	18.16	1,400	635	5,700	2,586	—	—
110	33.53	15.9	35' 8"	10.87	—	—	4,800	2,177	—	—	
120' (36.58 m)	30	9.14	77.6	122' 9"	37.41	16,600	7,530	33,700	15,286	11,300	5,126
	35	10.67	75.1	121' 6"	37.03	13,100	5,942	27,100	12,293	8,800	3,992
	40	12.19	72.6	120' 1"	36.60	10,600	4,808	22,500	10,206	7,000	3,175
	50	15.24	67.6	116' 6"	35.51	7,200	3,266	16,500	7,484	4,600	2,087
	60	18.29	62.3	111' 9"	34.06	5,200	2,359	12,700	5,761	3,100	1,406
	70	21.34	56.8	105' 10"	32.26	3,800	1,724	10,100	4,581	2,000	907
	80	24.38	50.8	98' 7"	30.05	2,700	1,225	8,200	3,720	1,200	544
	90	27.43	44.4	89' 6"	27.28	1,900	862	6,700	3,039	—	—
	100	30.48	37.0	77' 9"	23.70	1,300	590	5,600	2,540	—	—
	110	33.53	26.2	62' 2"	18.95	—	—	4,700	2,132	—	—
120	36.58	15.2	37' 1"	11.30	—	—	3,900	1,769	—	—	
130' (39.62 m)	30	9.14	78.6	133' 0"	40.54	—	—	33,500	15,196	—	—
	35	10.67	76.3	132' 10"	40.49	—	—	27,000	12,247	—	—
	40	12.19	74.0	130' 6"	39.78	—	—	22,400	10,161	—	—
	50	15.24	69.4	127' 2"	38.76	—	—	16,400	7,439	—	—
	60	18.29	64.6	123' 0"	37.49	—	—	12,600	5,715	—	—
	70	21.34	59.6	117' 8"	35.87	—	—	9,900	4,491	—	—
	80	24.38	54.3	111' 2"	33.88	—	—	8,000	3,629	—	—
	90	27.43	48.7	103' 2"	31.45	—	—	6,600	2,994	—	—
	100	30.48	42.5	93' 4"	28.45	—	—	5,400	2,449	—	—
	110	33.53	35.5	81' 1"	24.71	—	—	4,500	2,041	—	—
120	36.58	27.0	64' 8"	19.71	—	—	3,700	1,678	—	—	
130	39.62	14.6	38' 4"	11.68	—	—	3,100	1,406	—	—	
140' (42.67 m)	30	9.14	79.4	143' 2"	43.64	—	—	33,400	15,150	—	—
	35	10.67	77.3	142' 1"	43.31	—	—	26,900	12,202	—	—
	40	12.19	75.2	140' 10"	42.92	—	—	22,300	10,115	—	—
	50	15.24	70.9	137' 10"	42.01	—	—	16,200	7,348	—	—
	60	18.29	66.5	134' 0"	40.84	—	—	12,400	5,625	—	—
	70	21.34	62.0	129' 1"	39.34	—	—	9,800	4,445	—	—
	80	24.38	57.2	123' 3"	37.57	—	—	7,900	3,583	—	—
	90	27.43	52.2	116' 2"	35.41	—	—	6,400	2,903	—	—
	100	30.48	46.8	107' 8"	32.82	—	—	5,300	2,404	—	—
	110	33.53	40.9	97' 3"	29.64	—	—	4,400	1,996	—	—
120	36.58	34.2	84' 3"	25.68	—	—	3,600	1,633	—	—	
130	39.62	26.0	67' 0"	20.42	—	—	2,900	1,315	—	—	
140	42.67	14.1	39' 7"	12.06	—	—	2,400	1,089	—	—	
150' (45.72 m)	35	10.67	78.2	152' 4"	46.43	—	—	26,700	12,111	—	—
	40	12.19	76.2	151' 2"	46.08	—	—	22,100	10,025	—	—
	50	15.24	72.2	148' 4"	45.21	—	—	16,000	7,258	—	—
	60	18.29	68.2	144' 9"	44.12	—	—	12,200	5,534	—	—
	70	21.34	64.0	140' 4"	42.77	—	—	9,600	4,355	—	—
	80	24.38	59.7	135' 0"	41.15	—	—	7,700	3,493	—	—
	90	27.43	55.1	128' 7"	39.19	—	—	6,300	2,858	—	—
	100	30.48	50.3	121' 0"	36.88	—	—	5,100	2,313	—	—
	110	33.53	45.1	111' 10"	34.09	—	—	4,200	1,905	—	—
	120	36.58	39.5	100' 10"	30.73	—	—	3,400	1,542	—	—
130	39.62	33.0	87' 3"	26.59	—	—	2,800	1,270	—	—	
140	42.67	25.1	69' 3"	21.11	—	—	2,200	998	—	—	
150	45.72	13.6	40' 9"	12.42	—	—	1,700	771	—	—	

$\Phi$  Measured from center of boom head sheave to ground.

(continued)

# LS-118 lifting crane capacities

Refer to Notes below

Boom						Side Frames Extended				Side Frames Retracted	
Length	Radius		Angle	Boom Point Height $\Phi$		Cwt. "A"		Cwt. "AB"		Cwt. "A" Only	
	Feet	Meters	Degree	Feet	Meters	Pounds	Kilograms	Pounds	Kilograms	Pounds	Kilograms
160' (48.77 m)	35	10.67	78.9	162' 7"	49.55	Not Applicable	Not Applicable	26,600	12,066	Not Applicable	Not Applicable
	40	12.19	77.1	161' 6"	49.23			22,200	10,070		
	50	15.24	73.4	158' 10"	48.41			15,900	7,212		
	60	18.29	69.6	155' 6"	47.40			12,100	5,489		
	70	21.34	65.7	151' 4"	46.13			9,500	4,309		
	80	24.38	61.7	146' 6"	44.65			7,600	3,447		
	90	27.43	57.6	140' 7"	42.85			6,100	2,767		
	100	30.48	53.2	133' 8"	40.74			5,000	2,268		
	110	33.53	48.6	125' 7"	38.28			4,000	1,814		
	120	36.58	43.6	116' 0"	35.36			3,300	1,497		
	130	39.62	38.2	104' 4"	31.80			2,600	1,179		
	140	42.67	31.9	90' 2"	27.48			2,100	953		
	150	45.72	24.3	71' 6"	21.79			1,600	726		
160	48.77	13.2	42' 0"	12.80	1,200	544					

$\Phi$  Measured from center of boom head sheave to ground.

## Notes — lifting crane capacities

- The capacities included in this chart are the maximum allowable, and are based on machine standing level on firm supporting surface under ideal job conditions.
- Capacities are based on 75% of minimum tipping loads unless marked with an asterisk (\*).
  - Asterisk indicates capacities based on factors other than those which would cause a tipping condition.
- Capacities are based on freely suspended loads and make no allowance for such factors as the effect of wind, sudden stopping of loads, supporting surface conditions, and operating speeds. Operator must reduce load ratings to take such conditions into account. Deduction from rated capacities must be made for weight of hook block, weighted ball/hook, sling, spreader bar, or other suspended gear.
- 44" x 54" (1.54 m x 1.37 m) Tubular Boom With Open Throat Top Section — for lifting 120,000# (54,432 kg), 8-part load hoist line (3/4" — 19.05 mm, Type "N" wire rope) is required. Check parts of line required for all capacities.
- Hydraulic retractable high gantry must be fixed in raised position for all capacities on this chart.
- The 20' 6" (6.25 m) boom live mast must be used for all capacities on this chart.
- When using live mast as short boom, maximum lifting capacity of the mast is 36,000# (16,330 kg) at minimum 10' (3.05 m) radius.
  - For lifting 36,000# (16,330 kg) on boom live mast with 3/4" (19.05 mm) dia. wire rope, 3 parts of 3/4" (19.05 mm) dia. Type "N" wire rope are required.

**Note:** Use of live mast as short boom is intended for machine assembly or disassembly only. It is not to be used for general crane service.
- Use of boom midpoint suspension pendants required for boom 150' (45.72 m) and 160' (48.77 m) long.
- Least stable rated position is over the side.
- Main boom length must not exceed 160' (48.77 m).
- Maximum boom/jib combination permitted — 160' (48.77 m) boom plus 40' (12.19 m) jib, or 150' (45.72 m) boom plus 50' (15.24 m) jib. Maximum jib length permitted — 50' (15.24 m).
- To determine capacities for intermediate boom lengths not shown on this chart, use the capacity for the next longer boom length shown — for actual angle or radius at which boom/load are being worked.
- These capacities apply only to the machine as originally manufactured and normally equipped by FMC Corporation, Crane and Excavator Division.

**Boom** — angle: 42" x 42" (1.06 x 1.06 m) with open throat.

**Jib** — tubular: 30" x 24" (.76 x .61 m).

**Crawler** — 12' 6" (3.81 m) gauge extended, 8' 11" (2.72 m) retracted; 17' 0" (5.18 m) over-all length.

Maximum boom and boom/jib<sup>①</sup> machine can lift off ground unassisted — without load.

	Counterweight "A"				Counterweight "AB"			
	Boom		Boom + Jib		Boom		Boom + Jib	
	Feet	Meters	Feet	Meters	Feet	Meters	Feet	Meters
Over Ends								
Side frames extended	120	36.58	100 + 50	30.48 + 15.24	160	48.77	160 + 40	48.77 + 12.19
Side frames retracted	120	36.58	100 + 50	30.48 + 15.24	—	—	—	—
Over Sides								
Side frames extended	120	36.58	90 + 50	27.43 + 15.24	160	48.77	150 + 50	45.72 + 15.24
Side frames retracted	100	30.48	70 + 50	21.34 + 15.24	—	—	—	—

<sup>①</sup> Hook block on ground.

Maximum boom and boom/jib machine can lift off ground and travel<sup>②</sup> with boom horizontal<sup>③</sup> — without load.

	Counterweight "A"				Counterweight "AB"			
	Boom		Boom + Jib		Boom		Boom + Jib	
	Feet	Meters	Feet	Meters	Feet	Meters	Feet	Meters
Over Ends								
Side frames extended	90	27.43	70 + 50	21.34 + 15.24	140	42.67	110 + 50	33.53 + 15.24
Side frames retracted	90	27.43	70 + 50	21.34 + 15.24	—	—	—	—
Over Sides								
Side frames extended	80	24.38	60 + 50	18.29 + 15.24	140	42.67	110 + 50	33.53 + 15.24
Side frames retracted	70	21.34	50 + 50	15.24 + 15.24	—	—	—	—

② Based on firm, level supporting surface and minimum travel speed.

③ Boom and boom/jib combinations include 60-ton (54.4 metric ton) hook block and 15-ton (13.6 metric ton) ball with swivel hook suspended beneath main boom and jib headshafts.

## LS-118 jib capacities

Refer to Notes below

**Boom** — tubular; 44" x 54" (1.11 m x 1.37 m) with open throat top section, 1¼" (31.75 mm) dia. boom pendants, hydraulic retractable high gantry, boom live mast, and with boom midpoint suspension pendants (as required).

**Crawler** — 12' 6" (3.81 m) gauge extended 8' 11" (2.72 m) retracted; 17' 0" (5.18 m) over-all length.

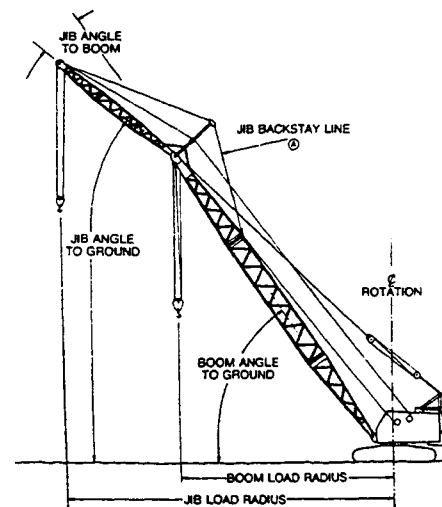
**Counterweight** — 12,200# (5,534 kg) ctw "A" or 46,000# (20,866 kg) ctw. "AB".

**Jib** — tubular; 30" (.76 m) wide, 24" (.61 m) deep.

Jib Angle To Ground	Jib Lengths							
	20' (6.10 m)		30' (9.14 m)		40' (12.19 m)		50' (15.24 m)	
	Pounds	Kilograms	Pounds	Kilograms	Pounds	Kilograms	Pounds	Kilograms
80°	20,000	9,072	16,000	7,258	12,000	5,443	8,000	3,629
65°	16,000	7,258	13,000	5,897	10,000	4,763	6,000	2,722
50°	13,000	5,897	10,000	4,763	8,000	3,629	5,000	2,268
35°	10,500	4,763	8,000	3,629	6,000	2,722	4,000	1,814
20°	9,500	4,309	7,000	3,175	5,000	2,268	3,000	1,361

### Notes — tubular jib capacities

- Capacities shown are based on a FMC tubular jib with a cross section 30" (.76 m) wide by 24" (.61 m) deep used with 10' 0" (3.05 m) high jib mast in the proper working position.
- For jib angle to ground, deduct jib angle to boom from the boom angle to ground.
- The backstay line (A) is anchored to the boom upper section.
- The jib angle to boom must not exceed 30°.
- Determining machine jib capacities:
  - Add the length of boom plus the length of jib used.
  - Determine the jib load radius.
  - Refer to lifting crane capacity chart and select the boom length that corresponds to the total length of boom and jib in (a) and the radius in (b).
    - The jib capacity is equal to the lifting crane capacity unless restricted by the maximum jib capacities shown above.
  - If the total length of boom and jib exceeds the longest boom length listed in the lifting capacity chart deduct 600# (272 kg) from the capacity shown for the longest boom length for the radius required in (b).
    - The jib capacity is the resulting figure unless restricted by the maximum jib capacities shown above.
- Determining lifting crane capacities with jib on boom:
  - When operating off the main boom peak sheaves with a jib on the boom, the following reductions in machine lifting capacities must be made.
    - 20' (6.10 m) jib — 1,600# (726 kg)
    - 30' (9.14 m) jib — 1,900# (862 kg)
    - 40' (12.19 m) jib — 2,200# (998 kg)
    - 50' (15.24 m) jib — 2,500# (1,134 kg)



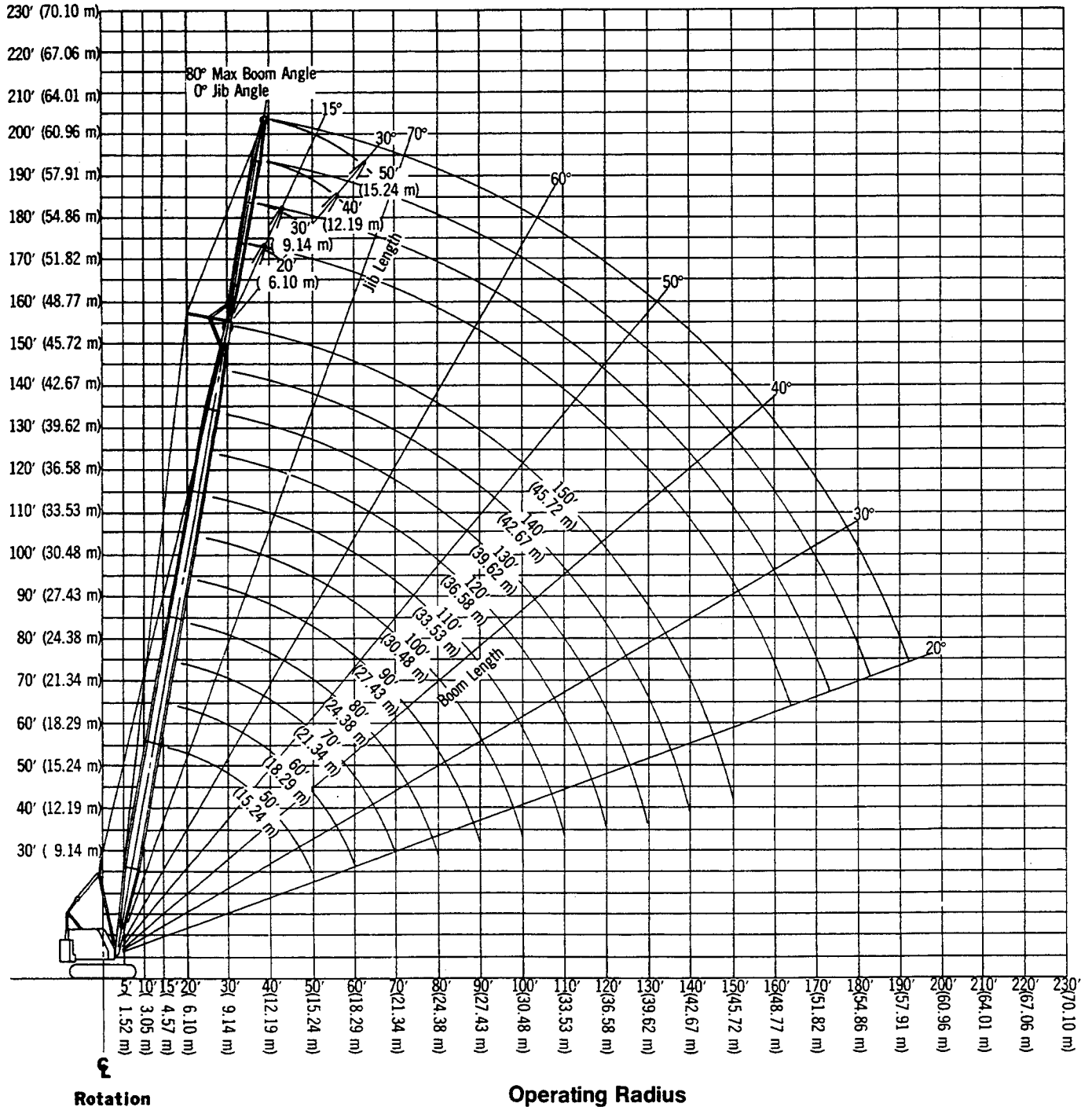
## LS-118 boom/jib working ranges

**Boom** — tubular; 44" x 54" (1.11 m x 1.37 m) with open throat top section, 1 1/4" (31.75 mm) dia. boom pendants, hydraulic retractable high gantry, boom live mast, and with boom midpoint suspension pendants (as required).

**Crawler** — 12' 6" (3.81 m) gauge extended, 8' 11" (2.72 m) retracted; 17' 0" (5.18 m) over-all length.

**Counterweight** — 12,200# (5,534 kg) ctwt "A" or 46,000# (20,866 kg) ctwt. "AB".

**Jib** — tubular; 36" (.76 m) wide, 24" (.61 m) deep.



## LS-118 dragline/clamshell capacities

Refer to Notes below

**Boom** — tubular; 44" x 54" (1.11 m x 1.37 m) with open throat top section, 1 1/4" (31.75 mm) dia. boom pendants, hydraulic retractable high gantry, with boom live mast.

**Crawler** — 12' 6" (3.81 m) gauge extended, 17' 0" (5.18 m) over-all length.

**Counterweight** — 12,200# (5,534 kg) ctwt. "A" only.

Length	Boom					Side Frames Extended — Cwt. "A" Only			
	Radius		Angle	Boom Point Height <sup>Ⓢ</sup>		Dragline		Clamshell	
	Feet	Meters	Degree	Feet	Meters	Pounds	Kilograms	Pounds	Kilograms
40' (12.19 m)	10	3.05	81.7	45' 1"	13.74	—	—	13,600	6,169
	12	3.66	78.8	44' 9"	13.64	—	—	↑	↑
	15	4.57	74.4	44' 1"	13.44	—	—	↓	↓
	20	6.10	66.7	42' 3"	12.88	—	—	—	—
	25	7.62	58.7	39' 8"	12.09	11,800	5,352	13,600	6,169
	30	9.14	49.9	36' 1"	11.00	11,800	5,352	11,500	5,216
	35	10.67	39.7	31' 1"	9.47	10,200	4,627	9,200	4,173
	40	12.19	26.5	25' 6"	7.77	8,800	3,992	7,900	3,583
50' (15.24 m)	12	3.66	81.0	54' 10"	16.71	—	—	13,600	6,169
	15	4.57	77.5	54' 4"	16.56	—	—	↑	↑
	20	6.10	71.6	53' 0"	16.15	—	—	↓	↓
	25	7.62	65.4	51' 0"	15.54	—	—	13,600	6,169
	30	9.14	58.9	48' 4"	14.73	11,800	5,352	11,300	5,126
	35	10.67	52.0	45' 0"	13.72	10,100	4,581	9,100	4,128
	40	12.19	44.3	40' 6"	12.34	8,300	3,765	7,400	3,357
	45	13.72	35.3	34' 5"	10.49	6,900	3,130	6,200	2,812
60' (18.29 m)	15	4.57	79.6	64' 7"	19.68	—	—	13,600	6,169
	20	6.10	74.7	63' 4"	19.30	—	—	13,600	6,169
	25	7.62	69.7	61' 9"	18.82	—	—	13,600	6,169
	30	9.14	64.5	59' 8"	18.19	—	—	11,200	5,080
	35	10.67	59.1	57' 1"	17.40	9,900	4,491	8,900	4,037
	40	12.19	53.4	53' 8"	16.36	8,100	3,674	7,300	3,311
	45	13.72	47.2	49' 6"	15.09	6,700	3,039	6,100	2,167
	50	15.24	40.3	44' 3"	13.49	5,700	2,586	5,100	2,313
60' (18.29 m)	55	16.76	32.3	37' 7"	11.45	4,900	2,223	4,400	1,996
	56	17.07	30.0	40' 6"	12.34	4,700	2,132	4,200	1,905
	60	18.29	21.6	25' 7"	7.80	—	—	3,800	1,724

<sup>Ⓢ</sup> Measured from center of boom head sheave to ground.

### Notes — dragline/clamshell capacities

- The capacities included in this chart are the maximum allowable, and are based on machine standing level on firm supporting surface under ideal job conditions.
- Capacities are based on 75% of minimum tipping loads for dragline; 67 1/2% for clamshell.
- Capacities are maximum recommended by Commercial Standard CS90-58 and PCSA Standard #1. User must make allowances for soft or uneven supporting surfaces, rapid cycle operations, bucket suction or other unfavorable conditions which may require smaller buckets for most efficient operation.
- Weight of bucket, plus load, should not exceed these capacities.
- Dragline operation with boom angle less than 35° is not recommended.
- Boom length for dragline/clamshell operation should not exceed 60' (18.29 m).
- Refer to notes 5, 6, 11 and 12 under "Notes — lifting crane capacities."

We are constantly improving our products and therefore reserve the right to change designs and specifications.



**FMC Corporation** Crane and Excavator Division Headquarters Cedar Rapids Iowa 52406

Plants in: Cedar Rapids Iowa (2) • Lexington Kentucky • Ontario Canada • Milan Italy • Queretaro Mexico • Nagoya Japan (under license)