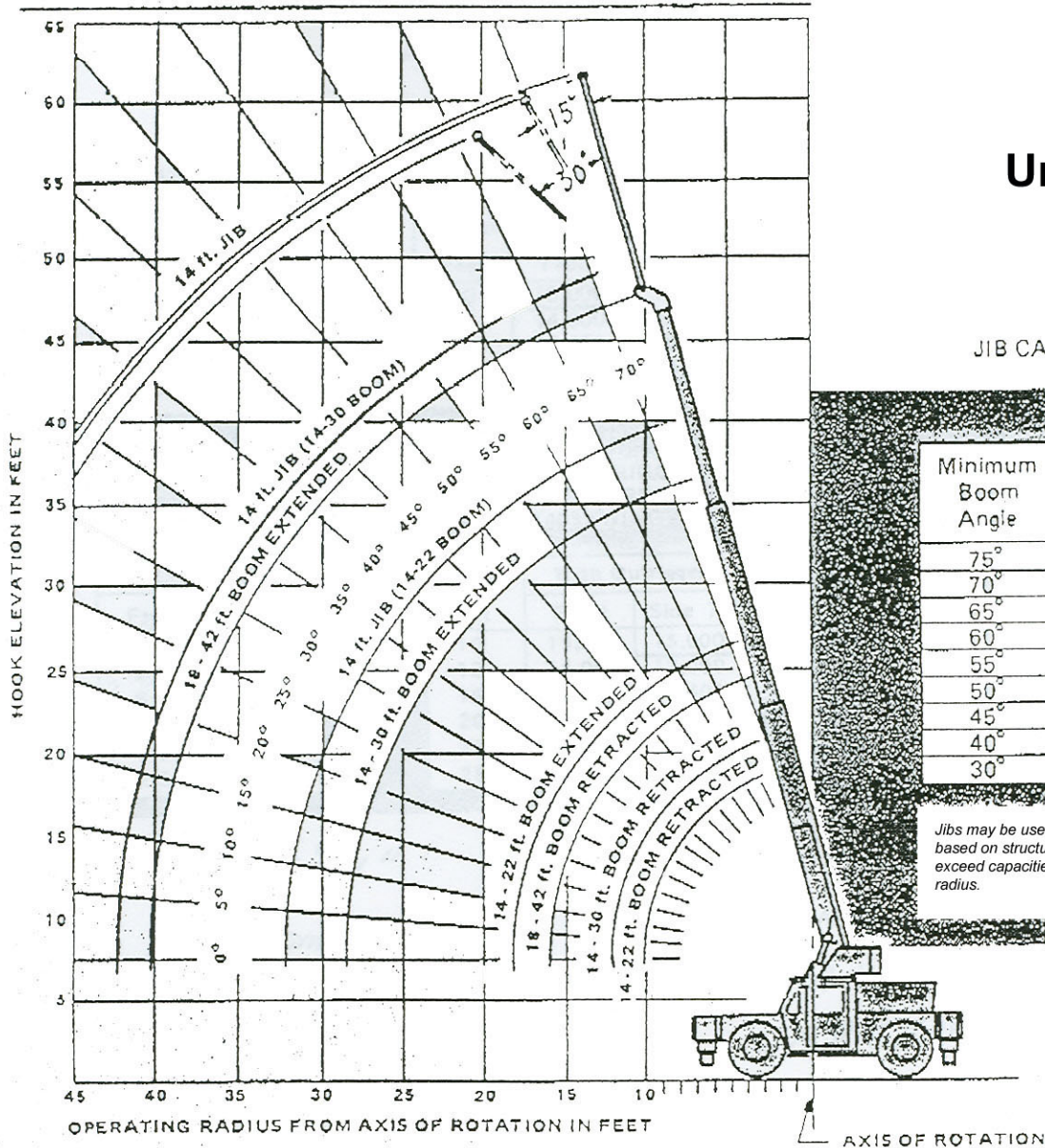


Unité : 10-19



JIB CAPACITIES IN POUNDS

Minimum Boom Angle	No Offset	Maximum Offset (30°)
75°	6,200	2,600
70°	5,000	2,400
65°	4,300	2,300
60°	3,700	2,150
55°	3,300	2,100
50°	2,600	1,650
45°	2,400	1,500
40°	2,200	1,460
30°	1,900	1,200

Jibs may be use with single part time only. Capacities are based on structural strength of jibs. Actual load must not exceed capacities given in main boom chart of the working radius.

CHASSIS - OPTIONAL EQUIPMENT

ENGINE DATA

MAKE	OPTIONAL
TYPE	Detroit Diesel 3-53N
CYLINDERS	2-cycle diesel
BORE & STROKE	3
DISPLACEMENT	3.875 x 4.50 in. (98mm x 114mm)
NET H.P.	159 cu. in. (2606cm³)
NET TORQUE	83 @ 2800 RPM
GOVERNED RPM	156 lbs. ft. @ 2800 RPM
COOLING SYSTEM	2800
FUEL CAPACITY	Liquid, 28½ qt. (27 liters) capacity
ELECTRICAL SYSTEM	50 gal. (189 liters) w/Protecto Cap
ALTERNATOR	12 volt
BATTERY	55 amp
	150 plate, 204 amp hr.

TRANSMISSION - Power shift, forward-reverse with Torque Converter, manual speed selection; 4 speeds forward and 4 speeds reverse.

LIMITED SLIP DIFFERENTIAL - Same as standard except for limited slip feature.

LP (Liquid Propane) GAS SYSTEM - Liquid withdrawal.

TIRES - 9.00 x 20 - Michelin

CAB - Steel construction, fully-enclosed; weatherstripped, safety glass windows, windshield, skylight and left-hand door; electric windshield wiper and cab heater.

DEFROSTER - Electric fan.

LIGHTS - Group 1 - Head, tail, stop and back-up. Group 2 - Head, tail, stop, back-up, 4-way flasher and turn signal.

PINTLE HOOK (Front) - Flush-mounted.

PINTLE HOOK (Rear) - Flush-mounted.

TOWING WINCH - Front-mounted; 9,000 lbs. (4 082kg) capacity.

OUTRIGGERS - Hydraulic with integral safety holding valves. Oblique and vertical operation positions. Individually-controlled from Operator's position.

(1) Front outriggers only - 140° swing
(2) Front and rear outriggers - 260° swing
(3) Front and rear outriggers - 360° swing

CARRY-DECK POSTS - Set of five.

ELECTRONIC AUDIO BACK-UP ALARM

Constant improvement and engineering progress make it necessary that we reserve the right to make specification, equipment, and price changes without notice.

MODEL 36
RATED LIFTING CAPACITIES

14 ft. - 22 ft. BOOM

FRONT OUTRIGGERS
FULLY SPREAD
140° SWING

ON RUBBER
140° SWING

Radius in Feet	On Rubber	
	Front	Side 70°
10	12,000	8,750
12	10,250	6,300
15	6,650	4,200
19	4,450	3,050

Radius in Feet	With Outriggers	
	Front	Side 70°
10	15,000	15,000
12	14,000	12,300
15	12,750	8,400
19	9,600	5,750

PICK & CARRY

6 TONS
CAPACITY
(5,5 metric tons)

WITH OUTRIGGERS

7½ TONS
CAPACITY
(6,8 metric tons)

14 ft. - 30 ft. BOOM

FRONT OUTRIGGERS
FULLY SPREAD
140° SWING

ON RUBBER
140° SWING

Radius in Feet	On Rubber	
	Front	Side**
10	12,000	8,100
12	9,200	5,800
15	6,600	4,000
20	4,250	2,500
25	3,000	1,650
28	2,500	1,350

Radius in Feet	With Outriggers	
	Front	Side 70° *
10	15,000	15,000
12	14,000	12,000
15	12,750	8,400
20	9,000	5,400
25	6,200	3,800
28	5,100	3,200

FRONT & REAR OUTRIGGERS
FULLY SPREAD
260° & 360° SWING

Radius in Feet	With Outriggers	
	Front	360°*
10	15,000	15,000
12	14,000	14,000
15	12,750	12,750
20	9,000	7,000
25	6,200	4,800
28	5,100	4,000

Length : 15' 4"
Length with boom : 21' 7"
Height : 8' 1"
Width : 8'
Weight : 22 500 lbs.

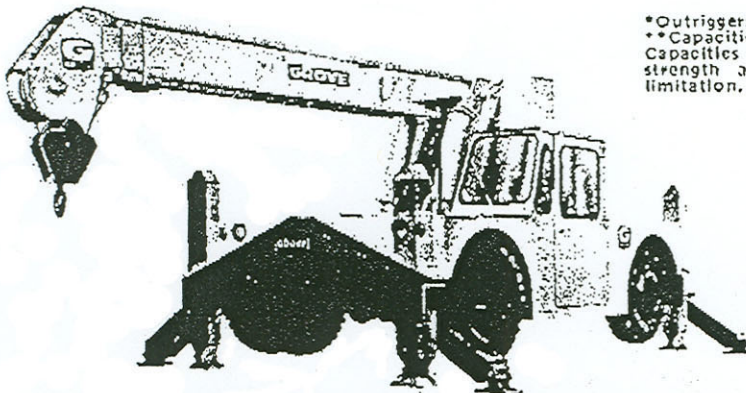
Longueur : 15' 4"
Long. Hors-tout : 21' 7"
Hauteur : 8' 1"
Largeur : 8'
Poids : 22 500 lbs.

AU PROPANE

NOTES TO LIFTING CAPACITIES
Applies to All Above Load Charts

*Outriggers required in spread position.
**Capacities also applicable when outriggers are used vertically.
Capacities appearing above bold line are based on machinery strength and tipping should not be relied upon as a capacity limitation.

1. Rated lifting capacities, with or without outriggers, are the maximum loads covered by the manufacturer's warranty with the machine standing on a firm, level and uniform surface. Capacities do not exceed 85% of tipping.
2. For certain conditions, capacities are controlled by machinery strength. Machine tipping must not be relied upon as the capacity limitation.
3. The weights of all load-handling devices are considered part of the load lifted and suitable allowances for them should be made.



EXCLUSIVE DUAL POSITION. OUTRIGGERS permit the