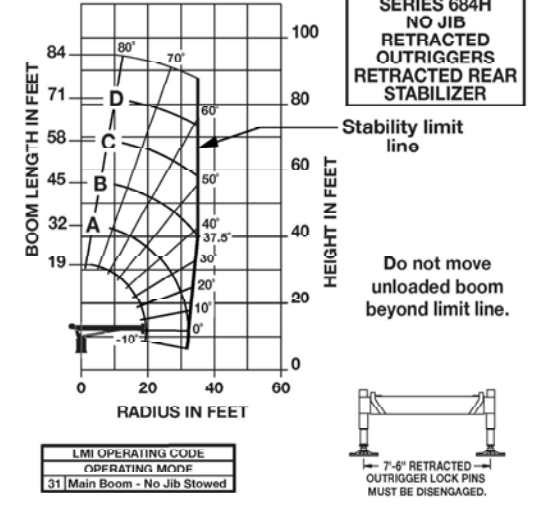
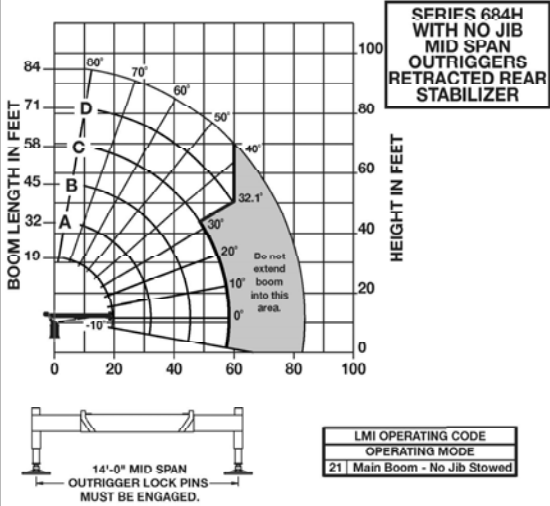
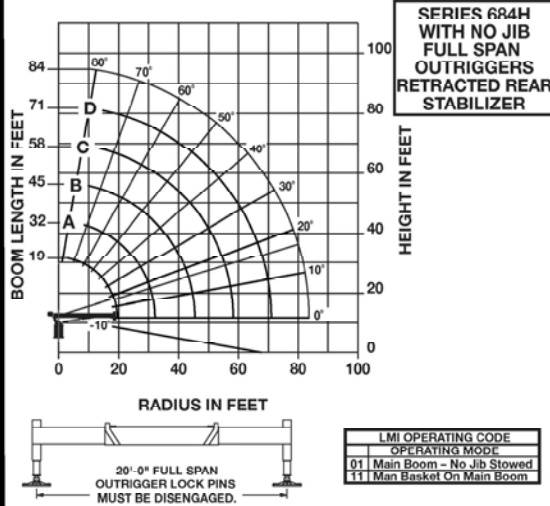


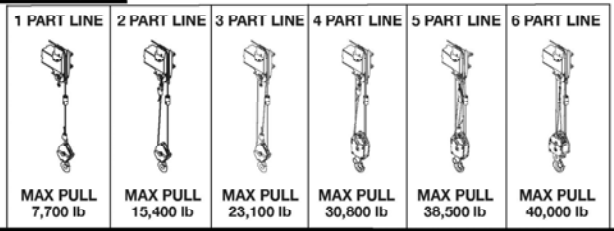
NATIONAL CRANE CORPORATION



LOAD RATINGS

LOADED RADIUS (ft)	LOADED BOOM ANGLE (deg)	19 FT BOOM (lb)	LOADED BOOM ANGLE (deg)	A 32 FT BOOM (lb)	LOADED BOOM ANGLE (deg)	B 45 FT BOOM (lb)	LOADED BOOM ANGLE (deg)	C 58 FT BOOM (lb)	LOADED BOOM ANGLE (deg)	D 71 FT BOOM (lb)	LOADED BOOM ANGLE (deg)	84 FT BOOM (lb)
0	71.7	40,000										
8	61.2	30,300	74	20,900	79.4	20,300						
10	53.5	25,500	70.5	20,650	76.8	17,600						
12	44.8	21,800	66.4	19,150	74.1	15,750	78.1	12,200				
14	34.9	18,550	62.2	17,400	71.4	14,450	76.1	11,250	79	8,700		
16	20.9	14,800	57.9	15,900	68.7	13,550	74.1	10,500	77.4	8,200	79.5	4,200
20		48.4	12,950	63	12,250	69.9	9,100	74.5	7,300	76.9	4,200	
25		33.8	9,950	55.3	9,900	64.5	7,900	70.3	6,400	73.6	4,200	
30			46.7	8,150	59.3	8,850	66	5,700	70.3	4,200		
35			37.4	6,750	53.2	5,900	61.4	5,150	66.7	3,850		
40			23.7	5,150	46.5	4,950	56.6	4,500	62.9	3,350		
45			38.7	4,550	51.5	3,850	58.9	2,950				
50				29	3,900	45.9	3,250	54.7	2,550			
55				39.6	2,700	50.2	2,150					
60				32.1	2,350	45.5	1,900					
65				22.1	2,000	40.2	1,600					
70						34.2	1,350					
75						27	1,200					
80						16.6	850					
0	0	8,300	0	3,900	0	2,100	0	1,050	0	500	0	150

LOADLINE EQUIPMENT DEDUCT (lb)
Downhaul weight 150
One sheave block 200
Two sheave block 355



- NOTES:**
- Capacities do not exceed 85% stability on the full span capacity chart.
 - Capacities do not exceed stability based on ISO 4305-1991 on the mid-span and retracted capacity charts.
 - Shaded areas are structurally limited capacities.
 - Handling of personnel is only permitted with full span outriggers.

NOTICE

- Do not deadhead line block against boom tip when extending boom.
- Keep at least 3 wraps of loadline on drum at all times.
- Use only 9/16" diameter rotation resistant cable with 38,500 lb breaking strength on this machine.