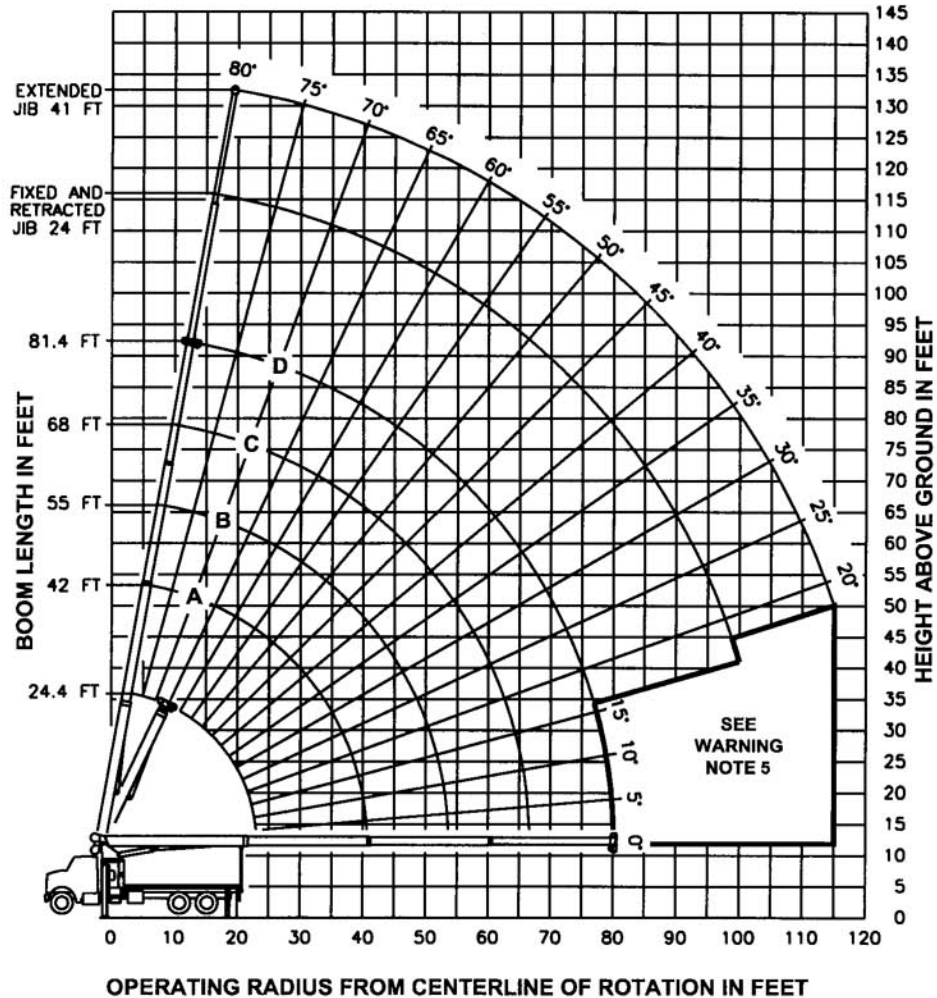


GUAY

Manitex

MODÈLE 2281C

RANGE DIAGRAM



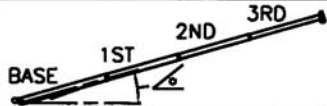
OPERATING RADIUS FROM CENTERLINE OF ROTATION IN FEET

LMI OPERATING CODES						
SETTING			CRANE WITH PERSONNEL LIFTING PLATFORM			
#1	---	MAIN BOOM	#5	---	PERSONNEL LIFTING PLATFORM ON MAIN BOOM	
#2	---	FIXED JIB	#6	---	PERSONNEL LIFTING PLATFORM ON FIXED JIB	
#3	---	TELE JIB - RETRACTED	#7	---	PERSONNEL LIFTING PLATFORM ON TELE JIB - RETRACTED	
#4	---	TELE JIB - EXTENDED	#8	---	PERSONNEL LIFTING PLATFORM ON TELE JIB - EXTENDED	

ALLOWABLE LINE PULL						WARNING
1 PART LINE	2 PART LINE	3 PART LINE	4 PART LINE	5 PART LINE	6 PART LINE	
8500 LBS	17000 LBS	25500 LBS	34000 LBS	42500 LBS	44000 LBS	
7400 LBS	14800 LBS	22200 LBS	29600 LBS	37000 LBS	44000 LBS	<p>ANTI-TWO-BLOCK SYSTEM MUST BE IN GOOD OPERATING CONDITION BEFORE OPERATING CRANE. REFER TO OWNER'S MANUAL.</p> <p>KEEP AT LEAST 3 WRAPS OF LOAD LINE ON DRUM AT ALL TIMES.</p>
<p>9/16" - 6X25 IWRC (3.5:1 S.F.) 29750 LBS. BREAKING STRENGTH</p> <p>9/16" ROT RESISTANT (5.0:1 S.F.) 37000 LBS. BREAKING STRENGTH</p>						

DEDUCTIONS FROM RATED LOADS FOR LOAD HANDLING DEVICES SUPPLIED BY MANITEX	
AUXILIARY BLOCK	--- 50 LBS
OVERHAUL BALL	--- SEE OVERHAUL BALL MFR. NAMEPLATE
LOAD BLOCK	--- SEE BLOCK MFR. NAMEPLATE
HOSE REEL	--- 160 LBS
SWING AROUND JIB	--- SEE LOAD CHART

WARNING
LIFTING OFF THE MAIN BOOM POINT WHILE THE JIB IS ERECTED IS NOT INTENDED OR APPROVED.

LOAD RATINGS IN LBS WITH OUTRIGGERS AND STABILIZERS EXTENDED										JIB LOAD RATINGS IN LBS WITH OUTRIGGERS AND STABILIZERS EXTENDED							
LMI CODE #1										LMI CODE #2				LMI CODE #3		LMI CODE #4	
OPERATING RADIUS	LOADED BOOM ANGLE	BOOM LENGTH AND MARKER								OPERATING RADIUS	BOOM ANGLE	JIB LENGTH FOR ALL BOOM LENGTHS	BOOM ANGLE	JIB LENGTH FOR ALL BOOM LENGTHS	BOOM ANGLE	JIB LENGTH FOR ALL BOOM LENGTHS	
			A	B	C	D	24 FT	24 FT	41 FT								
5	78	44000								10							
8	70	35150								12							
10	65	29700	76	14500						14							
12	60	24640	74	14500	78	14500				17							
14	54	20870	71	14500	76	14500	80	13050		20	80	4650	80	4450			
17	44	16830	66	14500	73	14500	77	11700	80	9200							
20	32	13940	62	14270	70	13430	75	10550	78	8500	25	78	4360	78	4160	80	3000
25			54	10990	64	11000	70	9000	75	7550	30	76	3900	76	3700	78	2740
30			44	8780	58	8880	66	8120	71	6640	35	73	3500	73	3290	76	2490
35			32	7180	51	7290	61	7120	67	5880	40	70	3160	70	2940	74	2260
40			13	5620	44	5770	56	5840	63	5260	45	67	2850	67	2640	71	2070
45					35	4650	50	4720	59	4700	50	64	2590	64	2370	69	1900
50					24	3800	44	3880	55	3930	55	61	2370	61	2140	66	1730
55							37	3230	50	3270	60	58	2170	58	1950	64	1580
60							28	2700	45	2750	65	55	2000	55	1770	61	1430
65							15	2260	39	2320	70	51	1840	51	1620	58	1310
70									32	1960	75	47	1710	47	1470	55	1210
75									24	1650	80	43	1490	43	1260	52	1110
80									3	1380	85	39	1260	39	1030	49	1020
85											90	34	1070	34	830	46	940
90											95	27	890	27	650	42	870
95											100	19	730	19	500	38	790
100											105					34	650
105											110					29	520
110											115					22	410
115																	
		290 LBS.	170 LBS.	130 LBS.	110 LBS.	90 LBS.	DEDUCTIONS FOR STOWED FIXED JIB										
		440 LBS.	260 LBS.	200 LBS.	160 LBS.	140 LBS.	DEDUCTIONS FOR STOWED TELESCOPIC JIB										

WARNING

1. THE OPERATOR MUST READ AND UNDERSTAND THE OWNER'S MANUAL BEFORE OPERATING THIS CRANE.
2. POSITIONING OR OPERATION OF CRANE BEYOND AREAS SHOWN ON THIS CHART IS NOT INTENDED OR APPROVED EXCEPT WHERE SPECIFIED IN OWNER'S MANUAL.
3. LOADED BOOM ANGLES AT SPECIFIED BOOM LENGTHS GIVE ONLY AN APPROXIMATION OF THE OPERATING RADIUS. THE BOOM ANGLE BEFORE LOADING SHOULD BE GREATER TO ACCOUNT FOR DEFLECTIONS. DO NOT EXCEED THE OPERATING RADIUS FOR RATED LOADS.
4. THE OPERATING RADIUS SHOWN IN THE JIB RATING CHART IS FOR FULLY EXTENDED BOOM ONLY. WHEN BOOM IS NOT FULLY EXTENDED, USE ONLY LOADED BOOM ANGLE TO DETERMINE LOAD RATING OF JIB.
5. BOOM MUST BE FULLY RETRACTED WHEN JIB IS ERECTED, BEFORE LOWERING BOOM THROUGH THIS AREA.
6. FOR BOOM ANGLES NOT SHOWN ON JIB LOAD RATING CHART, USE RATING OF NEXT LOWER BOOM ANGLE.
7. FOR BOOM LENGTHS NOT SHOWN, USE RATING OF NEXT LONGER BOOM LENGTH. FOR RADII NOT SHOWN, USE RATING OF NEXT LONGER RADIUS.
8. CRANE LOAD RATINGS ON OUTRIGGERS ARE BASED ON FREELY SUSPENDED LOADS WITH THE MACHINE LEVELED AND STANDING ON A FIRM UNIFORM SUPPORTING SURFACE. NO ATTEMPT SHALL BE MADE TO MOVE A LOAD HORIZONTALLY ON THE GROUND IN ANY DIRECTION.
9. PRACTICAL WORKING LOADS DEPEND ON SUPPORTING SURFACE, WIND, AND OTHER FACTORS AFFECTING STABILITY SUCH AS HAZARDOUS SURROUNDINGS, EXPERIENCE OF PERSONNEL, AND PROPER HANDLING, ALL OF WHICH MUST BE TAKEN INTO ACCOUNT BY THE OPERATOR.
10. THE MAXIMUM LOAD WHICH MAY BE TELESCOPED IS LIMITED BY HYDRAULIC PRESSURE, BOOM ANGLE, AND BOOM LUBRICATION. IT IS SAFE TO ATTEMPT TO TELESCOPE ANY LOAD WITHIN THE LIMITS OF THE LOAD RATING CHART. BOOM MUST BE FULLY RETRACTED AGAINST BOOM STOPS AT ALL TIMES WHEN LIFTING MINIMUM BOOM LENGTH CAPACITY LOADS.

INFORMATION

1. DEDUCTIONS MUST BE MADE FROM RATED LOADS FOR STOWED JIB, OPTIONAL ATTACHMENTS, HOOKS, AND LOADBLOCKS (SEE DEDUCTION CHART). WEIGHTS OF SLINGS AND ALL OTHER LOAD HANDLING DEVICES SHALL BE CONSIDERED A PART OF THE LOAD.
2. CRANE LOAD RATINGS WITH OUTRIGGERS ARE BASED ON OUTRIGGERS AND STABILIZERS EXTENDED AND SET WITH MACHINE LEVELED.
3. LOAD RATINGS ABOVE THE HEAVY LINE ARE STRUCTURALLY LIMITED CAPACITIES. LOAD RATINGS BELOW THE HEAVY LINE ARE STABILITY LIMITED CAPACITIES AND DO NOT EXCEED 85% OF TIPPING.

DEFINITIONS

1. OPERATING RADIUS IS THE HORIZONTAL DISTANCE FROM THE AXIS OF ROTATION TO THE CENTER OF THE VERTICAL HOIST LINE OR TACKLE WITH LOAD APPLIED.
2. LOADED BOOM ANGLE AS SHOWN IN THE COLUMN HEADED BY \angle IS THE INCLUDED ANGLE BETWEEN THE HORIZONTAL AND LONGITUDINAL AXES OF THE BOOM BASE AFTER LIFTING RATED LOAD AT RATED RADIUS.