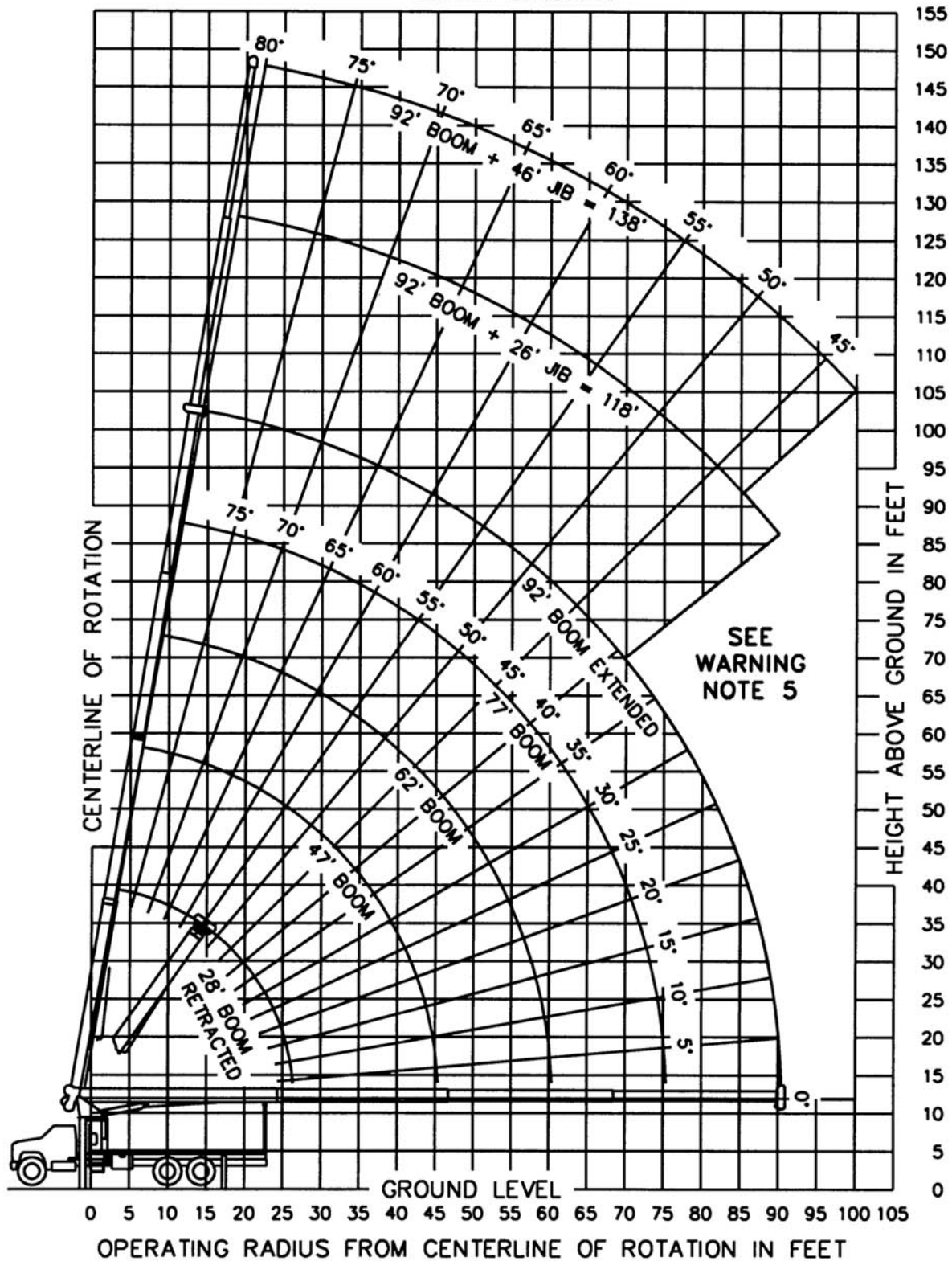
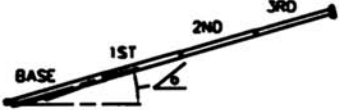


GUAY

Manitex **MODÈLE**
2592

RANGE DIAGRAM



LOAD RATINGS IN LBS WITH OUTRIGGERS AND STABILIZERS EXTENDED										JIB LOAD RATINGS WITH OUTRIGGERS AND STABILIZERS EXTENDED							
OPERATING HEIGHT	LOADED BOOM ANGLE	BOOM LENGTH								FIXED JIB		TELESCOPIC JIB					
			28 FT	47 FT	62 FT	77 FT	92 FT	OPERATING HEIGHT	BOOM LENGTH FOR ALL BOOM LENGTHS SEE WARNING NOTE 4	BOOM LENGTH FOR ALL BOOM LENGTHS SEE WARNING NOTE 4	BOOM LENGTH FOR ALL BOOM LENGTHS SEE WARNING NOTE 4	BOOM LENGTH FOR ALL BOOM LENGTHS SEE WARNING NOTE 4					
5	79	50000								10							
8	72	37800								12							
10	68	32000	78	20500						15							
12	63	26650	75	20500	79	20500				20							
15	56	20900	71	20500	77	18300	80	15000		25	79	5500	79	5300			
20	42	15000	65	15000	72	14800	76	12700	79	9900							
25	21	11300	58	11300	67	11300	72	10900	76	8680	25	77	5000	77	4850	79	3400
30			50	9170	62	9170	68	9170	73	7740	30	75	4610	75	4350	77	3300
35			41	7400	56	7400	64	7400	70	6760	35	72	4160	72	3900	76	3200
40			30	6050	50	6050	60	6050	66	5920	40	70	3750	70	3480	74	3040
45					43	5000	55	5000	63	5000	45	67	3380	67	3110	72	2780
50					36	4190	50	4190	59	4190	50	65	3070	65	2800	69	2520
55					26	3400	45	3400	55	3400	55	62	2790	62	2500	67	2280
60							39	2830	51	2830	60	59	2480	59	2190	65	2070
65							32	2310	46	2310	65	56	2040	56	1750	62	1880
70							24	1880	42	1880	70	53	1670	53	1380	60	1710
75									36	1550	75	49	1350	49	1060	58	1520
80									30	1240	80	46	1080	46	780	55	1240
85									22	970	85	42	840	42	540	52	990
90											95					49	780
95																	
100											100					46	580
											DEDUCTIONS FOR STOWED FIXED JIB						
											DEDUCTIONS FOR STOWED TELESCOPIC JIB						

ALLOWABLE LINE PULL						WARNING
1 PART LINE	2 PART LINE	3 PART LINE	4 PART LINE	5 PART LINE	6 PART LINE	
						<p>ANTI-TWO-BLOCK SYSTEM MUST BE IN GOOD OPERATING CONDITION BEFORE OPERATING CRANE. REFER TO OWNER'S MANUAL.</p> <p>KEEP AT LEAST 3 WRAPS OF LOAD LINE ON DRUM AT ALL TIMES.</p>
8500 LBS	17000 LBS	25500 LBS	34000 LBS	42500 LBS	50000 LBS	9/16" - 6X25 IWRC (3.5:1 S.F.) 29750 LBS. MIN BREAKING STRENGTH
7400 LBS	14800 LBS	22200 LBS	29600 LBS	37000 LBS	44400 LBS	9/16" ROT RESISTANT (5.0:1 S.F.) 37000 LBS. MIN BREAKING STRENGTH

DEDUCTIONS FROM RATED LOADS FOR MANITEX SUPPLIED LOAD HANDLING DEVICES	
AUXILIARY BLOCK	50 LBS
OVERHAUL BALL	180 LBS
SINGLE SHEAVE LOAD BLOCK	260 LBS
DOUBLE SHEAVE LOAD BLOCK	350 LBS
TRIPLE SHEAVE LOAD BLOCK	380 LBS
HOSE REEL	140 LBS
SWING AROUND JIB (STOWED)	SEE LOAD CHART

WARNING

LIFTING OFF THE MAIN BOOM POINT WHILE THE SWING AROUND JIB IS ERECTED IS NOT INTENDED OR APPROVED.

WARNING

1. THE OPERATOR MUST READ AND UNDERSTAND THE OWNER'S MANUAL BEFORE OPERATING THIS CRANE.
2. POSITIONING OR OPERATION OF CRANE BEYOND AREAS SHOWN ON THIS CHART IS NOT INTENDED OR APPROVED EXCEPT WHERE SPECIFIED IN OWNER'S MANUAL.
3. LOADED BOOM ANGLES AT SPECIFIED BOOM LENGTHS GIVE ONLY AN APPROXIMATION OF THE OPERATING RADIUS. THE BOOM ANGLE BEFORE LOADING SHOULD BE GREATER TO ACCOUNT FOR DEFLECTIONS. DO NOT EXCEED THE OPERATING RADIUS FOR RATED LOADS.
4. THE OPERATING RADIUS SHOWN IN THE JIB RATING CHART IS FOR FULLY EXTENDED BOOM ONLY. WHEN BOOM IS NOT FULLY EXTENDED, USE ONLY LOADED BOOM ANGLE TO DETERMINE LOAD RATING OF JIB.
5. BOOM MUST BE FULLY RETRACTED WHEN JIB IS ERECTED, BEFORE LOWERING BOOM THRU THIS AREA.
6. FOR BOOM ANGLES NOT SHOWN ON JIB LOAD RATING CHART, USE RATING OF NEXT LOWER BOOM ANGLE.
7. FOR BOOM LENGTHS NOT SHOWN, USE RATING OF NEXT SHORTER OR LONGER BOOM LENGTH, WHICHEVER IS LESS. FOR RADII NOT SHOWN, USE RATING OF NEXT LONGER RADIUS.
8. CRANE LOAD RATINGS ON OUTRIGGERS ARE BASED ON FREELY SUSPENDED LOADS WITH THE MACHINE LEVELED AND STANDING ON A FIRM UNIFORM SUPPORTING SURFACE. NO ATTEMPT SHALL BE MADE TO MOVE A LOAD HORIZONTALLY ON THE GROUND IN ANY DIRECTION.
9. PRACTICAL WORKING LOADS DEPEND ON SUPPORTING SURFACE, WIND, AND OTHER FACTORS AFFECTING STABILITY SUCH AS HAZARDOUS SURROUNDINGS, EXPERIENCE OF PERSONNEL, AND PROPER HANDLING, ALL OF WHICH MUST BE TAKEN INTO ACCOUNT BY THE OPERATOR.
10. THE MAXIMUM LOAD WHICH MAY BE TELESCOPED IS LIMITED BY HYDRAULIC PRESSURE, BOOM ANGLE, AND BOOM LUBRICATION. IT IS SAFE TO ATTEMPT TO TELESCOPE ANY LOAD WITHIN THE LIMITS OF THE LOAD RATING CHART.

INFORMATION

1. DEDUCTIONS MUST BE MADE FROM RATED LOADS FOR STOWED JIB, OPTIONAL ATTACHMENTS, HOOKS, AND LOAD-BLOCKS (SEE DEDUCTION CHART). WEIGHTS OF SLINGS AND ALL OTHER LOAD HANDLING DEVICES SHALL BE CONSIDERED A PART OF THE LOAD.
2. CRANE LOAD RATINGS WITH OUTRIGGERS ARE BASED ON OUTRIGGERS AND STABILIZERS EXTENDED AND SET WITH MACHINE LEVELED.
3. LOAD RATINGS ABOVE THE HEAVY LINE ARE STRUCTURALLY LIMITED CAPACITIES. LOAD RATINGS BELOW THE HEAVY LINE ARE STABILITY LIMITED CAPACITIES AND DO NOT EXCEED 85% OF TIPPING.

DEFINITIONS

1. OPERATING RADIUS IS THE HORIZONTAL DISTANCE FROM THE AXIS OF ROTATION TO THE CENTER OF THE VERTICAL HOIST LINE OR TACKLE WITH LOAD APPLIED.
2. LOADED BOOM ANGLE AS SHOWN IN THE COLUMN HEADED BY \angle , IS THE INCLUDED ANGLE BETWEEN THE HORIZONTAL AND LONGITUDINAL AXES OF THE BOOM BASE AFTER LIFTING RATED LOAD AT RATED RADIUS.