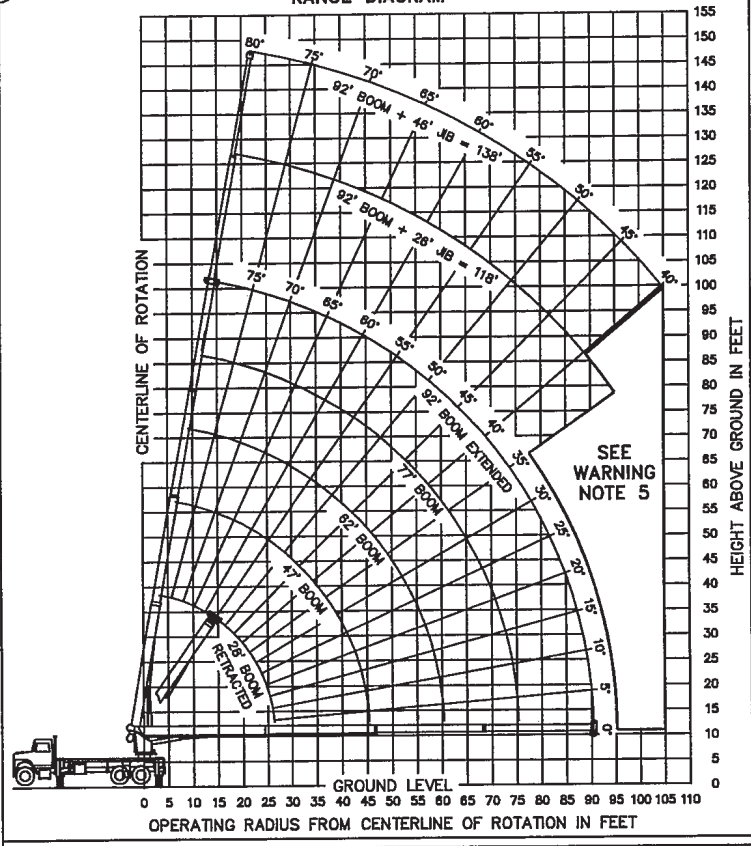


RANGE DIAGRAM



LMI OPERATING CODES

SETTING	CRANE CONFIGURATION	SETTING	CRANE WITH PERSONNEL LIFTING PLATFORM
#1	MAIN BOOM	#5	PERSONNEL LIFTING PLATFORM ON MAIN BOOM
#2	FIXED JIB	#6	PERSONNEL LIFTING PLATFORM ON FIXED JIB
#3	TELESCOPIC JIB-RETRACTED	#7	PERSONNEL LIFTING PLATFORM ON TELESCOPIC JIB-RETRACTED
#4	TELESCOPIC JIB-EXTENDED	#8	PERSONNEL LIFTING PLATFORM ON TELESCOPIC JIB-EXTENDED

ALLOWABLE LINE PULL

1 PART LINE	2 PART LINE	3 PART LINE	4 PART LINE	5 PART LINE	6 PART LINE
8500 LBS	17000 LBS	25500 LBS	34000 LBS	42500 LBS	50000 LBS
7400 LBS	14800 LBS	22200 LBS	29600 LBS	37000 LBS	44400 LBS

WARNING

ANTI-TWO-BLOCK SYSTEM MUST BE IN GOOD OPERATING CONDITION BEFORE OPERATING CRANE. REFER TO OWNER'S MANUAL.

KEEP AT LEAST 3 WRAPS OF LOAD LINE ON DRUM AT ALL TIMES.

9/16" - 6X25 INRC (3.5:1 S.F.) 29750 LBS. MIN BREAKING STRENGTH
 9/16" ROT RESISTANT (5.0:1 S.F.) 37000 LBS. MIN BREAKING STRENGTH

DEDUCTIONS FROM RATED LOADS FOR MANITEX SUPPLIED LOAD HANDLING DEVICES

AUXILIARY BLOCK	50 LBS
OVERHAUL BALL	180 LBS
SINGLE SHEAVE LOAD BLOCK	260 LBS
TRIPLE SHEAVE LOAD BLOCK	380 LBS
HOSE REEL	140 LBS
SWING AROUND JIB (STOWED)	SEE LOAD CHART

LOAD RATINGS IN LBS WITH OUTRIGGERS AND STABILIZERS EXTENDED

OPERATING RADIUS IN FEET	LMI CODE #1				
	LOADING BOOM ANGLE				
	28 FT	47 FT	62 FT	77 FT	92 FT
5	79 50000				
8	72 37800				
10	68 32000	78 20500			
12	63 27720	75 20500	79 20500		
15	56 23090	71 20500	77 18300	80 15000	
20	42 17240	65 15960	72 14800	76 12700	79 9900
25	21 12550	58 12930	67 11980	72 10900	76 8680
30		50 9990	62 10060	68 9250	73 7740
35		41 7960	56 8070	64 7970	70 6760
40		30 6470	50 6590	60 6650	66 5920
45			43 5460	55 5520	63 5230
50			36 4570	50 4630	59 4630
55			26 3840	45 3910	55 3950
60				39 3320	51 3360
65				32 2760	46 2810
70				24 2290	42 2340
75					36 1940
80					30 1600
85					22 1300
90					90 42 1160
95					95 38 930
100					100
105					105

JIB LOAD RATINGS WITH OUTRIGGERS AND STABILIZERS EXTENDED

OPERATING RADIUS IN FEET	JIB LOAD RATINGS WITH OUTRIGGERS AND STABILIZERS EXTENDED		
	FIXED JIB	TELESCOPIC JIB	
	LMI CODE #2	LMI CODE #3	LMI CODE #4
	JIB LENGTH FOR ALL BOOM LENGTHS SEE WARNING NOTE 4	JIB LENGTH FOR ALL BOOM LENGTHS SEE WARNING NOTE 4	JIB LENGTH FOR ALL BOOM LENGTHS SEE WARNING NOTE 4
	26 FT	26 FT	46 FT
10			
12			
15			
20			
25	79 5500	79 5300	
30	77 5000	77 4850	79 3400
35	75 4610	75 4350	77 3300
40	72 4160	72 3900	76 3200
45	70 3750	70 3480	74 3040
50	67 3380	67 3110	72 2780
55	65 3070	65 2800	69 2520
60	62 2790	62 2500	67 2280
65	59 2530	59 2250	65 2070
70	56 2270	56 1970	62 1880
75	53 2030	53 1720	60 1710
80	50 1720	50 1430	58 1550
85	46 1420	46 1130	55 1420
90	42 1160	42 870	52 1280
95	38 930	38 630	49 1080
100			46 870
105			43 680

460 LBS.	270 LBS.	210 LBS.	170 LBS.	140 LBS.	DEDUCTIONS FOR STOWED FIXED JIB
690 LBS.	410 LBS.	310 LBS.	250 LBS.	210 LBS.	DEDUCTIONS FOR STOWED TELESCOPIC JIB

WARNING

1. THE OPERATOR MUST READ AND UNDERSTAND THE OWNER'S MANUAL BEFORE OPERATING THIS CRANE.
2. POSITIONING OR OPERATION OF CRANE BEYOND AREAS SHOWN ON THIS CHART IS NOT INTENDED OR APPROVED EXCEPT WHERE SPECIFIED IN OWNER'S MANUAL.
3. LOADED BOOM ANGLES AT SPECIFIED BOOM LENGTHS GIVE ONLY AN APPROXIMATION OF THE OPERATING RADIUS. THE BOOM ANGLE BEFORE LOADING SHOULD BE GREATER TO ACCOUNT FOR DEFLECTIONS. DO NOT EXCEED THE OPERATING RADIUS FOR RATED LOADS.
4. THE OPERATING RADIUS SHOWN IN THE JIB RATING CHART IS FOR FULLY EXTENDED BOOM ONLY. WHEN BOOM IS NOT FULLY EXTENDED, USE ONLY LOADED BOOM ANGLE TO DETERMINE LOAD RATING OF JIB.
5. BOOM MUST BE FULLY RETRACTED WHEN JIB IS ERECTED, BEFORE LOWERING BOOM THRU THIS AREA.
6. FOR BOOM ANGLES NOT SHOWN ON JIB LOAD RATING CHART, USE RATING OF NEXT LOWER BOOM ANGLE.
7. FOR BOOM LENGTHS NOT SHOWN, USE RATING OF NEXT SHORTER OR LONGER BOOM LENGTH, WHICHEVER IS LESS. FOR RADII NOT SHOWN, USE RATING OF NEXT LONGER RADIUS.
8. CRANE LOAD RATINGS ON OUTRIGGERS ARE BASED ON FREELY SUSPENDED LOADS WITH THE MACHINE LEVELED AND STANDING ON A FIRM UNIFORM SUPPORTING SURFACE. NO ATTEMPT SHALL BE MADE TO MOVE A LOAD HORIZONTALLY ON THE GROUND IN ANY DIRECTION.
9. PRACTICAL WORKING LOADS DEPEND ON SUPPORTING SURFACE, WIND, AND OTHER FACTORS AFFECTING STABILITY SUCH AS HAZARDOUS SURROUNDINGS, EXPERIENCE OF PERSONNEL, AND PROPER HANDLING, ALL OF WHICH MUST BE TAKEN INTO ACCOUNT BY THE OPERATOR.
10. THE MAXIMUM LOAD WHICH MAY BE TELESCOPED IS LIMITED BY HYDRAULIC PRESSURE, BOOM ANGLE, AND BOOM LUBRICATION. IT IS SAFE TO ATTEMPT TO TELESCOPE ANY LOAD WITHIN THE LIMITS OF THE LOAD RATING CHART.

INFORMATION

1. DEDUCTIONS MUST BE MADE FROM RATED LOADS FOR STOWED JIB, OPTIONAL ATTACHMENTS, HOOKS, AND LOAD-BLOCKS (SEE DEDUCTION CHART). WEIGHTS OF SLINGS AND ALL OTHER LOAD HANDLING DEVICES SHALL BE CONSIDERED A PART OF THE LOAD.
 2. CRANE LOAD RATINGS WITH OUTRIGGERS ARE BASED ON OUTRIGGERS AND STABILIZERS EXTENDED AND SET WITH MACHINE LEVELED.
 3. LOAD RATINGS ABOVE THE HEAVY LINE ARE STRUCTURALLY LIMITED CAPACITIES. LOAD RATINGS BELOW THE HEAVY LINE ARE STABILITY LIMITED CAPACITIES AND DO NOT EXCEED 85% OF TIPPING.
- DEFINITIONS**
1. OPERATING RADIUS IS THE HORIZONTAL DISTANCE FROM THE AXIS OF ROTATION TO THE CENTER OF THE VERTICAL HOIST LINE OR TACKLE WITH LOAD APPLIED.
 2. LOADED BOOM ANGLE AS SHOWN IN THE COLUMN HEADED BY ∠, IS THE INCLUDED ANGLE BETWEEN THE HORIZONTAL AND LONGITUDINAL AXES OF THE BOOM BASE AFTER LIFTING RATED LOAD AT RATED RADIUS.

MODEL M2592S
 MANITEX INC.
 CRANE MEETS ANSI B30.5 REQUIREMENTS
 DWG NO. 7300035-007 (A)

AREA OF OPERATION

STANDARD 360° FULL CAPACITY WORK AREA

WARNING:
 THE FRONT TIRES MUST BE IN CONTACT WITH THE GROUND, AND THE MACHINE LEVELED, WHEN OPERATING IN THIS AREA.