

**GUAY**



**GROVE**<sup>®</sup>  
worldwide

Rough-Terrain Hydraulic Crane Specifications

# RT500C Series



# Superstructure specifications

<b>Boom</b>	28 ft. - 70 ft. (8.5-21.3m) three section Trapezoidal shaped full power boom. Telescoping is mechanically-synchronized with single lever control. Telescoping sections slide on adjustable and replaceable Nylatron wear pads. Maximum Tip Height: 76 ft. (23.1m).
<b>*Optional Jib</b>	23 ft. (7.1m) "A" frame jib offsettable at 0°, 15° or 30°. Stows beneath base boom when not in use. Maximum Tip Height: 98 ft. (29.9m)
<b>*Optional Swingaway Extension</b>	25 ft. (7.6m) lattice swingaway boom extension stows alongside base boom section when not in use. Maximum Tip Height: 102 ft. (31.1m).
<b>*Optional Telescopic Swingaway</b>	25 ft. to 34 ft. or 43 ft. (7.6 to 10.3m or 13.1m) telescoping lattice swingaway extension with integral offset mechanism, offsettable at 0°, 15° or 30°. Stows alongside base boom when not in use. Maximum Tip Height: 120 ft. (36.6m).
<b>Boom Nose</b>	Four steel sheaves mounted on heavy duty tapered roller bearings with removable pin-type rope guards. *Optional removable auxiliary boom nose with removable pin type rope guard.
<b>Boom Elevation</b>	Two double acting hydraulic cylinders with integral holding valves provide elevation from 0° to 75°.
<b>Load Moment &amp; Anti-Two Block System</b>	Standard load moment and anti-two block system with audio-visual warning and control lever lockout. These systems provide electronic display of boom angle, length, radius, tip height, relative load moment, maximum permissible load, load indication and warning of impending two-block condition.
<b>Cab</b>	Full vision, all steel fabricated with acoustical lining and tinted safety glass throughout. Deluxe seat incorporates armrest mounted hydraulic single-axis controls. Dash panel incorporates gauges for all engine functions. Other standard features include: telescoping tilt steering wheel, sliding side and rear windows, electric windshield wash-wipe, circulating air fan, manual skylight wiper, swing horn, fire extinguisher, seat belt and ashtray.
<b>Swing</b>	Ball bearing swing circle with 360° continuous rotation. Grove planetary glide-swing with foot applied multi-disc wet brake. Spring applied hydraulically released parking brake and plunger type, 1 position, mechanical house lock operated from cab. Maximum speed: 2.5 RPM.
<b>Counterweight</b>	Removable, bolted to turntable mast. 10,170 lbs. (4613 kg) with with main hoist only. 9,120 lbs. (4136 kg) with main and auxiliary hoists.
<b>HYDRAULIC SYSTEM Pumps</b>	3 main gear pumps, combined capacity 112.5 G.P.M (426 LPM) driven by carrier engine through P.T.O. Optional pump disconnect with engine jogging switch.
<b>Valves</b>	Precision four way double acting pilot operated control valves, 3 individual valve banks permit simultaneous control of multiple crane functions.
<b>Filter</b>	Return line type, full flow with bypass protection and service indicator. Replaceable cartridge with micron filtration rating of 7/17/22.

<b>Reservoir</b>	88 gallon (333 L) with spin-on breather filter, external sight level gauge, clean out access, strap mounted to frame.
<b>Oil Cooler</b>	Remote mounted with thermostatically controlled electric motor driven fan.
<b>Pressure Check Panel</b>	System pressure test panel permits easy verification of circuit pressures

## HOIST SPECIFICATIONS

Power up and down equal speed, planetary reduction with automatic spring applied multi-disc brake and hoist drum cable followers. Electronic hoist drum rotation indicators.

		<b>Main hoist Grove HO15D-16</b>	<b>*Auxiliary Hoist Grove HO15D-16</b>
<b>Make/Model</b>			
<b>Maximum single line speed</b>	Bottom layer	274 FPM (84m/min)	147 FPM (45m/min)
	Intermediate layer	323 FPM (98m/min)	174 FPM (53m/min)
	Top layer	348 FPM (106m/min)	187 FPM (57m/min)
<b>Maximum single line pull</b>	Bottom layer	10,020 lbs. (4545 kg)	10,020 lbs. (4545 kg)
	Intermediate layer	8,485 lbs. (3849 kg)	8,485 lbs. (3849 kg)
	Top layer	7,879 lbs. (3573 kg)	7,879 lbs. (3573 kg)
<b>Maximum permissible line pull</b>		9,080 lbs. (4119 kg)	9,080 lbs. (4119 kg)
<b>w/5:1 strength factor</b>		5/8 in. (16mm) 18x19 class	
<b>Maximum rope stowage</b>		360 ft. (110m)	360 ft. (110m)
		5/8 in. (16mm)	5/8 in. (16mm)
		Note: 350 ft. (106.7m) length of wire rope supplied with basic standard unit.	

*\*Denotes optional equipment*

# Carrier specifications

<b>Frame</b>	High strength alloy steel all welded box type construction with integral outrigger housings and front/rear lifting, towing and tie down lugs.
<b>Outrigger System</b>	Hydraulic single stage double box telescopic beam and "inverted" jack and integral holding valves. All steel fabricated quick release type outrigger floats. 16 1/2" (429mm) square. Maximum outrigger pad load 50,254 lbs. (22795 kg).
<b>Outrigger Controls</b>	Located in cab on front dash panel requires two hand operation. Crane level indicator located in cab.
<b>Engine</b>	Cummins 6BT 5.9 six cylinder turbo-charged water cooled diesel - 5.9L 125 bhp (93 kw) (Gross) @ 2,800 RPM. Maximum torque 325 ft. lbs. (45 kg/m) @ 1,700 RPM.
<b>Fuel Tank Capacity</b>	60 gallons (227 L)
<b>Electrical System</b>	Two 12-volt - maintenance free batteries, 625 CCA @ 0 degree F. 24-volt starting.
<b>Drive</b>	4 x 4
<b>Steering</b>	<p>Fully independent power steering:</p> <p>Front: Full hydraulic controlled by steering wheel.</p> <p>Rear: Full hydraulic hand lever controlled. Provides infinite variations of 4 main steering modes - front only, rear only, crab and coordinated.</p> <p>Standard rear wheel indicator.</p>
<b>Transmission</b>	Remote mounted powershift with 6 forward and 6 reverse speeds, 3 in high range, 3 in low range. Rear axle disconnect for 4 x 2 travel.
<b>Axles</b>	<p>Front: Drive-steer with differential and planetary reduction hubs rigid mounted to the chassis.</p> <p>Rear: Drive-steer with differential and planetary reduction hubs pivot mounted at the center of chassis frame providing up to 12" oscillation (305mm).</p> <p>Optional: *No-spin differential on rear axle.</p>
<b>Oscillation Lockouts</b>	Automatic full hydraulic lockouts on rear axle permits oscillation only with boom over the front. *Optional oscillation lockout override control.
<b>Brakes</b>	Dual braking system, air over hydraulic operating on all wheels. Spring-applied, air released front axle mounted parking brake.
<b>Tires</b>	Std. 20.5 x 25-24 P.R. Earthmover type, tubeless. *16.00 x 25 -28 P.R. Earthmover type, tubeless.
<b>Lights</b>	Full lighting including turn indicators, head, tail, brake and hazard warning lights.
<b>Maximum Speed</b>	22.8 MPH (36.7 kph)
<b>Maximum Gradeability</b>	110.5% (Theoretical based on 51,610 lbs. [23410 kg] GVW). 20.5 x 25 tires, pumps disengaged, 70 ft. (21.3m) boom.

	STANDARD MACHINE
<b>Gross Vehicle Weight &amp; Axle Loads</b>	<p>Front: 23,310 lbs. (10573 kg)</p> <p>Rear: 28,300 lbs. (12837kg)</p> <p>G.V.W.: 51,610 lbs. (23410 kg)</p>
<b>Miscellaneous Standard Equipment</b>	Full width steel fenders, dual rear view mirrors, hookblock tiedown sling, electronic back-up alarm, light package, front stowage well, control valve for auxiliary hoist.
<b>Optional Equipment</b>	<ul style="list-style-type: none"> <li>* Auxiliary hoist</li> <li>* Boom mounted worklights</li> <li>* 360° flashing light</li> <li>* Cab spotlight</li> <li>* Tachometer</li> <li>* Cold start aid (less canister)</li> <li>* Engine block heater</li> <li>* Electric skylight wiper, with opening skylight</li> <li>* Hookblocks</li> <li>* Tow winch (front mounted-maximum single line pull - 15,000 lbs. (6804 kg); maximum speed- 75 ft/min.)</li> <li>* Spare wheel assembly</li> <li>* Tire inflation kit</li> <li>* Tool kit</li> <li>* Pintle hook front/rear</li> <li>* High Speed Glide† system</li> <li>* Propane or diesel heater/defroster</li> <li>* Air conditioning</li> <li>* Dual axis joystick controllers</li> <li>* Hydraulic oil cab heater</li> <li>* Headache ball</li> </ul>

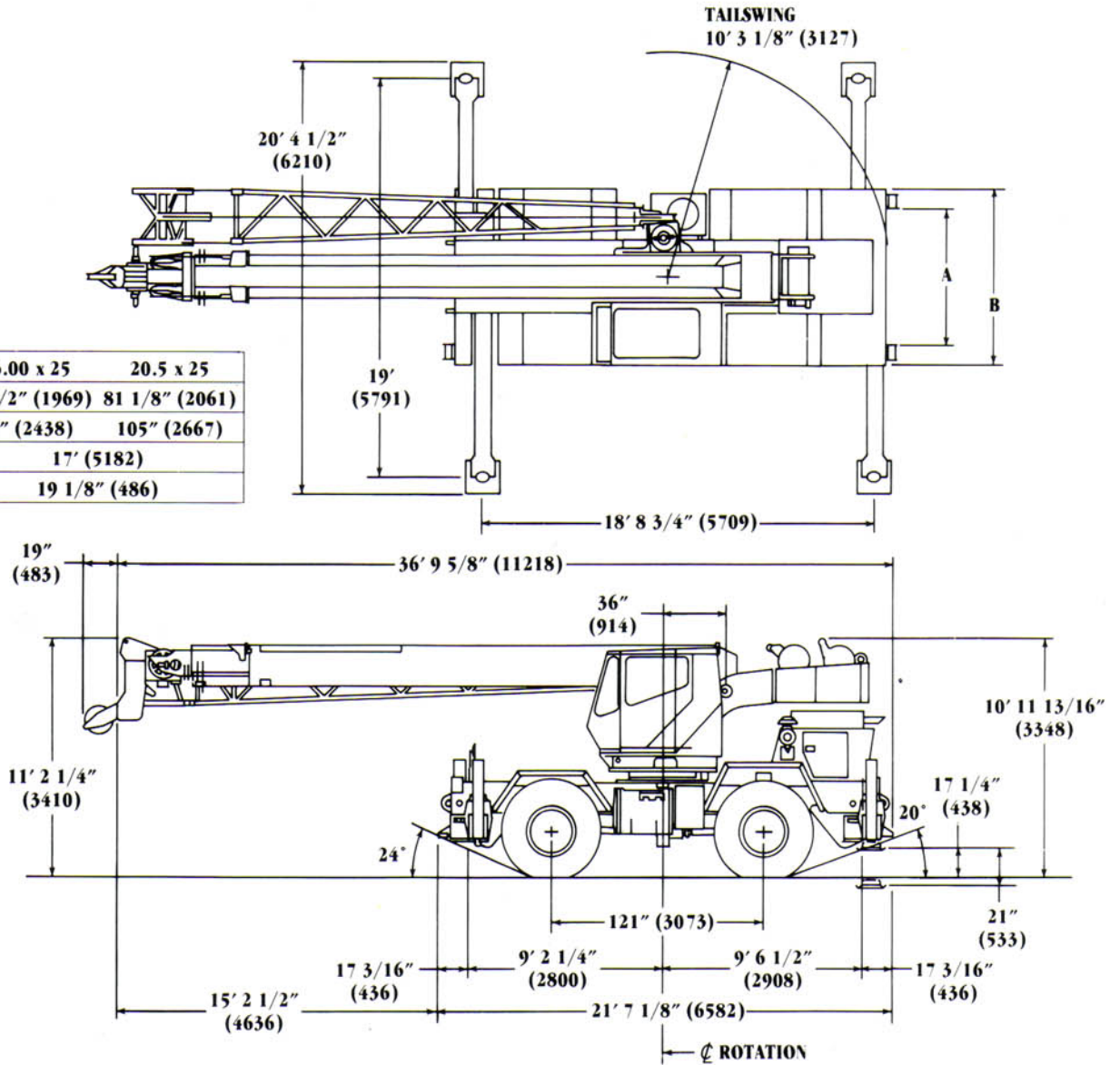
\*Denotes optional equipment

†Patented Grove feature or patent pending

# Dimensions

# RT500C Series

<b>TIRE SIZE</b>	16.00 x 25	20.5 x 25
<b>A (TRACK)</b>	77 1/2" (1969)	81 1/8" (2061)
<b>B (OAW)</b>	96" (2438)	105" (2667)
<b>Turning Radius</b>	17' (5182)	
<b>Ground Clearance</b>	19 1/8" (486)	





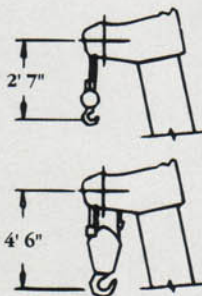
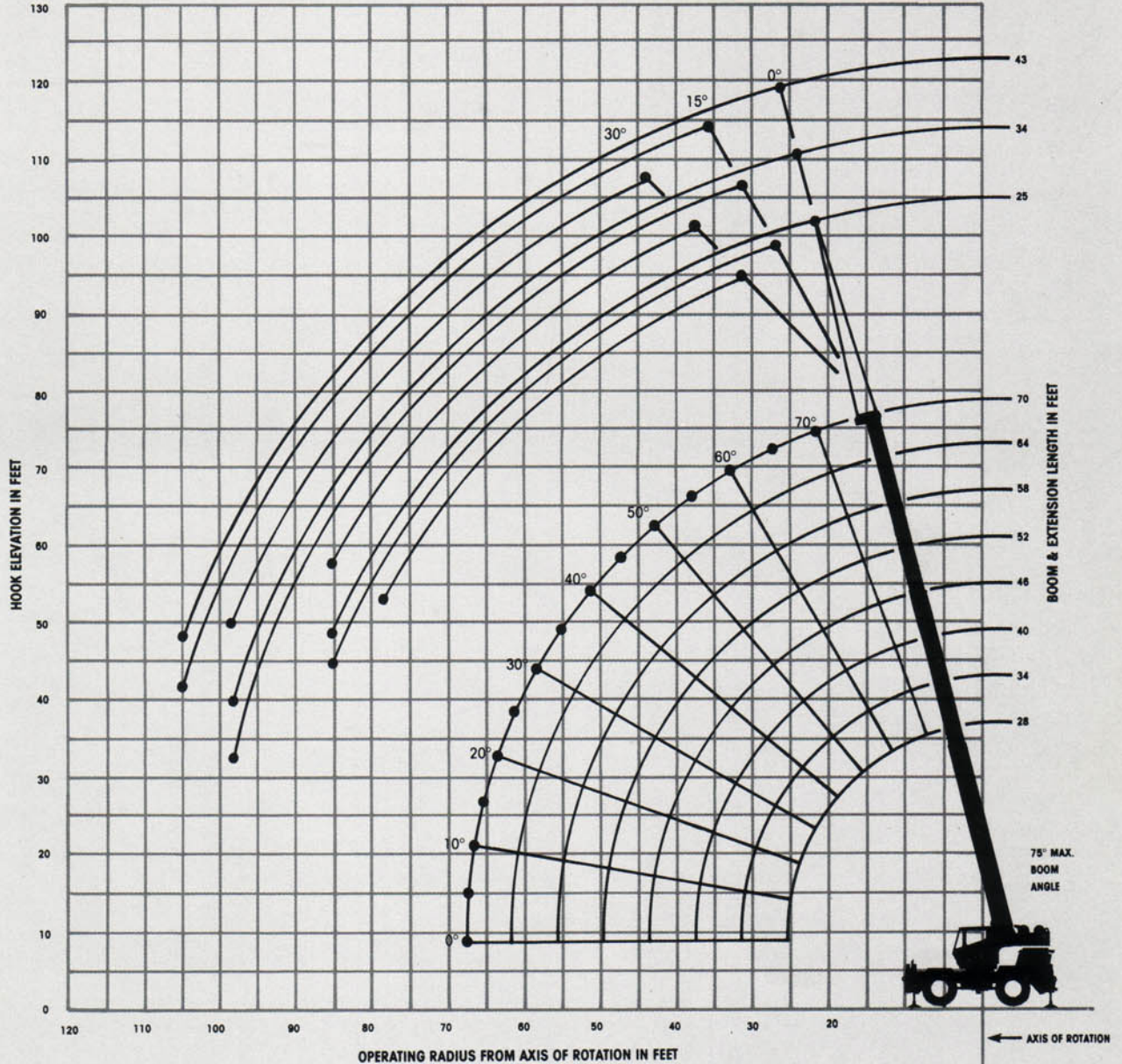


**GROVE**<sup>®</sup>  
worldwide

# RT528C

Rough terrain hydraulic crane  
85% Domestic 28 ft. -70 ft. full power boom

RANGE DIAGRAM (UNLADEN BOOM)



DIMENSIONS ARE FOR LARGEST GROVE FURNISHED HOOK BLOCK AND HEADACHE BALL, WITH ANTI-TWO BLOCK ACTIVATED

# NOTES FOR LIFTING CAPACITIES

**"WARNING: THIS CHART IS ONLY A GUIDE. The Notes below are for illustration only and should not be relied upon to operate the crane. The individual crane's load chart, operating instructions and other instruction plates must be read and understood prior to operating the crane".**

1. All rated loads have been tested to and meet minimum requirements of SAE J1063 OCT80 - Cantilevered Boom Crane Structures - Method of Test, and do not exceed 85% of the tipping load on outriggers (75% of tipping load on rubber) as determined by SAE J765 OCT80 Crane Stability Test Code.
2. Capacities given do not include the weight of hookblocks, slings, auxiliary lifting equipment and load handling devices. Their weights MUST be added to the load to be lifted. When more than minimum required reeving is used, the additional rope weight shall be considered part of the load.
3. Defined Arc  $\pm 6^\circ$  on either side of longitudinal centerline of machine.
4. All capacities are for crane on firm, level surface. It may be necessary to have structural supports under the outrigger floats or tires to spread the load to a larger bearing surface.
5. When either boom length or radius or both are between values listed, the smallest load shown at either the next larger radius or boom length shall be used.
6. For outrigger operation, ALL outriggers shall be fully extended with tires raised free of ground before raising the boom or lifting loads.
7. Tires shall be inflated to the recommended pressure before lifting on rubber.
8. Unless otherwise stated, capacities are with powered boom sections equally extended.
9. Capacities appearing above the bold line are based on structural strength and tipping should not be relied upon as a capacity limitation.
10. With tele-boom extension in working position and main boom length greater than 70 ft., boom angle must not be less than  $30^\circ$ .

Constant improvement and engineering progress make it necessary that we reserve the right to make specification, equipment, and price changes without notice. Illustrations shown may include optional equipment and accessories and may not include all standard equipment.



**Grove Worldwide - World Headquarters**  
 1565 Buchanan Trail East  
 Shady Grove, Pennsylvania 17256  
 Phone: (717) 597-8121 Telex: 1842308 Fax: (717) 597-4062

**Grove North America**  
 P.O. Box 21, Shady Grove, Pennsylvania 17256  
 Western Hemisphere, Asia/Pacific  
 Phone: (717) 597-8121 Telex: 1842308 Fax: (717) 597-4062

**Grove Europe\***  
 Sunderland, England SR4 6TT  
 Europe, Africa, Middle East, Near East  
 Phone: (091) 565-6281 Telex: 53484 CRANESG Fax: (091) 564-0442  
 \* Grove Europe Limited, Registered in England, Number 1845128, Registered office, Crown Works, Pallion, Sunderland, Tyne & Wear, England SR4 6TT.

## 20.5 x 25 TIRES - 24 PR ON RUBBER (STATIONARY DEFINED ARC OVER FRONT)

Radius in Feet	Main Boom Length in Feet							
	28	34	40	46	52	58	64	70
10	28,650 (64)	26,200 (69)						
12	24,950 (59.5)	24,950 (65.5)	21,000 (70)					
15	20,900 (51.5)	20,900 (59.5)	20,900 (65)	16,500 (69)				
20	14,900 (36.5)	14,900 (49)	14,900 (57)	12,200 (62)	12,200 (66)	12,200 (69.5)		
25	9,900 (6)	9,900 (36)	9,900 (47.5)	9,900 (54.5)	9,400 (60)	9,400 (64)	9,400 (67)	9,400 (69.5)
30		7,350 (15.5)	7,350 (36.5)	7,350 (46.5)	7,000 (53)	7,000 (58)	7,000 (62)	7,000 (65)
35			5,660 (20)	5,660 (36.5)	5,660 (45.5)	5,600 (51.5)	5,600 (56.5)	5,600 (60)
40				4,450 (23)	4,450 (36.5)	4,450 (45)	4,450 (50.5)	4,450 (55)
45					3,550 (25)	3,550 (37)	3,550 (44.5)	3,550 (49.5)
50						2,850 (26.5)	2,850 (37)	2,850 (43.5)
55							2,290 (3.5)	2,290 (28)
60								1,840 (13)
65								1,460 (15.5)

A6-829-009073

## ON RUBBER (STATIONARY - $360^\circ$ )

Radius in Feet	Main Boom Length in Feet							
	28	34	40	46	52	58	64	70
10	26,200 (64)	26,200 (69)						
12	19,350 (59.5)	19,350 (65.5)	16,000 (70)					
16	13,200 (51.5)	13,200 (59.5)	13,200 (65)	13,200 (69)				
20	7,910 (36.5)	7,910 (49)	7,910 (57)	7,910 (62)	7,910 (66)	7,400 (69.5)		
25	5,040 (6)	5,040 (36)	5,040 (47.5)	5,040 (54.5)	5,040 (60)	5,040 (64)	5,060 (67)	5,060 (69.5)
30		3,600 (15.5)	3,600 (36.5)	3,600 (46.5)	3,600 (53)	3,600 (58)	3,600 (62)	3,600 (65)
35			2,610 (20)	2,610 (36.5)	2,610 (45.5)	2,610 (51.5)	2,610 (56.5)	2,610 (60)
40				1,890 (23)	1,890 (36.5)	1,890 (45)	1,890 (50.5)	1,890 (55)
45					1,340 (25)	1,340 (37)	1,340 (44.5)	1,340 (49.5)
50						910 (26.5)	910 (37)	910 (43.5)

A6-829-009074

## ON RUBBER (PICK & CARRY CAPACITIES UP TO 2.5 MPH)

Radius in Feet	Main Boom Length in Feet							
	28	34	40	46	52	58	64	70
10	33,800 (64)							
12	29,000 (59.5)							
15	23,600 (51.5)	23,600 (59.5)	23,600 (65)	23,600 (69)				
20	14,900 (36.5)	14,900 (49)	14,900 (57)	14,900 (62)	12,200 (66)	12,200 (69.5)		
25	9,900 (6)	9,900 (36)	9,900 (47.5)	9,900 (54.5)	9,900 (60)	9,400 (64)	9,400 (67)	
30		7,180 (15.5)	7,180 (36.5)	7,180 (46.5)	7,180 (53)	7,180 (58)	7,000 (62)	7,000 (65)
35			5,660 (20)	5,660 (36.5)	5,660 (45.5)	5,660 (51.5)	5,660 (56.5)	5,600 (60)
40				4,450 (23)	4,450 (36.5)	4,450 (45)	4,450 (50.5)	4,450 (55)
45					3,550 (25)	3,550 (37)	3,550 (44.5)	3,550 (49.5)
50						2,850 (26.5)	2,850 (37)	2,850 (43.5)
55							2,290 (3.5)	2,290 (28)
60								1,840 (13)
65								1,460 (15.5)

Note: ( ) Boom angles are in degrees.

A6-829-009075

## NOTES FOR RUBBER CAPACITIES

	No Load Stability Data		Main Boom 70 ft.
	Min. boom angle (deg.) for indicated length	Max. boom length (ft.) at 0 deg. boom angle	
Front (No load)			0
			70
360 Deg. (No load)			36
			52

**25 FT. BOOM EXTENSION  
(ON OUTRIGGERS - 360°)**

Radius in Feet	Boom Angle Ref.	Cap. (lbs.)
25	75.0	*12,500
30	71.5	10,700
35	68.0	9,230
40	65.0	8,280
45	61.5	7,340
50	58.0	6,720
55	54.0	6,430
60	50.0	6,070
65	46.0	5,180
70	41.5	4,440
75	36.5	3,820
80	30.5	3,280
85	23.5	2,810
90	12.5	2,400

\*This capacity is based upon the maximum boom angle. A6-829-008673

**WEIGHT REDUCTIONS FOR  
LOAD HANDLING DEVICES**

25 ft. BOOM EXTENSION with 28 ft. - 70 ft. Boom	
*Stowed -	402 lbs.
*Erected -	1,279 lbs.

25 ft. - 43 ft. TELE. EXT. with 28 ft. - 70 ft. BOOM	
*Stowed -	725 lbs.
*Erected (Retracted) -	3,350 lbs.
*Erected (Extended) -	4,262 lbs.

\*Reduction of main boom capacities

HOOKBLOCKS:	
12 Ton, 1 Sheave	360 lbs.
35 Ton, 4 Sheave	600 lbs.
22 Ton, 3 Sheave	455 lbs.
Auxiliary Boom Head	112 lbs.
5 Ton Headache Ball	172 lbs.

**28 FT. - 70 FT. BOOM  
ON OUTRIGGERS FULLY EXTENDED - 360°**

Radius in Feet	Main Boom Length in Feet							
	28	34	40	46	52	58	64	70
10.0	56,000 (64)	36,000 (69)	36,000 (73)					
12.0	40,000 (59.5)	36,000 (65.5)	36,000 (70)	35,000 (73)				
15.0	31,000 (51.5)	31,000 (59.5)	30,950 (65)	30,300 (69)	29,750 (72)	29,150 (74.5)		
20.0	23,200 (36.5)	23,200 (49)	23,200 (57)	23,200 (62)	23,000 (66)	22,600 (69.5)	22,250 (72)	20,500 (74)
25.0	17,950 (6)	17,950 (36)	17,950 (47.5)	17,950 (54.5)	17,950 (60)	17,950 (64)	17,950 (67)	17,650 (69.5)
30.0		15,350 (15.5)	15,350 (36.5)	15,350 (46.5)	15,350 (53)	15,150 (58)	14,950 (62)	14,750 (65)
35.0			12,850 (20)	12,850 (36.5)	12,850 (45.5)	12,800 (51.5)	12,650 (56.5)	12,500 (60)
40.0				10,750 (23)	10,750 (36.5)	10,750 (45)	10,750 (50.5)	10,750 (55)
45.0					9,020 (25)	9,020 (37)	9,020 (44.5)	9,020 (49.5)
50.0						7,420 (26.5)	7,420 (37)	7,420 (43.5)
55.0						6,170 (3.5)	6,170 (28)	6,170 (37)
60.0							5,170 (13)	5,170 (28.5)
65.0								4,350 (15.5)
Minimum boom angle (deg.) for indicated length (no load)								0
Maximum boom length (ft.) at 0 deg. boom angle (no load)								70

Note: ( ) Boom angles are in degrees.

A6-829-008639

**25 FT. - 43 FT. BOOM TELE. EXTENSION ON OUTRIGGERS - 360°**

Radius in Feet	25 ft. LENGTH						34 ft. LENGTH						43 ft. LENGTH					
	0° OFFSET		15° OFFSET		30° OFFSET		0° OFFSET		15° OFFSET		30° OFFSET		0° OFFSET		15° OFFSET		30° OFFSET	
	Boom Angle Ref. (Deg.)	Cap. lbs.	Boom Angle Ref. (Deg.)	Cap. lbs.	Boom Angle Ref. (Deg.)	Cap. lbs.	Boom Angle Ref. (Deg.)	Cap. lbs.	Boom Angle Ref. (Deg.)	Cap. lbs.	Boom Angle Ref. (Deg.)	Cap. lbs.	Boom Angle Ref. (Deg.)	Cap. lbs.	Boom Angle Ref. (Deg.)	Cap. lbs.	Boom Angle Ref. (Deg.)	Cap. lbs.
25	75.0	*12,500	75.0	*7,300			75.0	*7,700					75.0	*4,500				
30	71.5	10,700	74.0	7,170	75.0	*5,250	73.0	7,180	75.0	*4,900			74.0	4,430				
35	68.0	9,230	70.5	6,490	73.0	5,080	70.0	6,110	73.5	4,790			71.5	3,960	75.0	*2,800		
40	65.0	8,280	67.5	5,900	69.5	4,730	67.0	5,370	70.5	4,360	75.0	*3,200	68.5	3,610	74.0	2,770		
45	61.5	7,340	64.0	5,460	66.0	4,440	63.5	4,870	67.5	4,020	71.5	2,900	66.0	3,360	71.0	2,640	75.0	*2,200
50	58.0	6,720	60.5	5,210	62.5	4,270	60.0	4,500	64.5	3,730	68.0	2,590	63.5	3,140	68.5	2,520	73.0	2,150
55	54.0	6,430	56.5	5,030	58.5	4,130	56.5	4,070	61.5	3,400	64.5	2,360	60.5	2,920	65.5	2,400	69.5	2,080
60	50.0	5,510	53.0	4,970	54.5	3,980	53.0	3,700	58.0	3,100	61.0	2,220	57.5	2,730	62.5	2,280	66.5	2,020
65	46.0	4,630	48.5	4,630	50.0	3,900	49.5	3,450	54.5	2,830	57.0	2,070	54.5	2,560	59.0	2,170	63.0	1,950
70	41.5	3,890	44.0	3,890	45.5	3,800	45.5	3,310	50.5	2,610	53.0	1,940	51.5	2,360	56.0	2,110	59.5	1,880
75	36.5	3,270	39.0	3,270	40.0	3,270	41.0	3,170	46.5	2,470	48.5	1,880	48.0	2,210	52.5	2,040	56.0	1,810
80	30.5	2,730	33.0	2,730	34.0	2,730	36.5	3,080	42.0	2,410	44.0	1,830	44.5	2,140	49.0	1,980	52.0	1,730
85	23.5	2,270	26.0	2,270			31.5	2,740	37.0	2,370	38.5	1,790	41.0	2,100	45.0	1,940	47.5	1,670
90	12.5	1,860					25.5	2,320	31.5	2,310	32.0	1,770	36.5	2,060	40.5	1,900	43.0	1,620
95							18.5	1,950	24.0	1,950			32.0	2,010	35.5	1,850	37.5	1,570
100													26.5	1,940	30.0	1,780	30.5	1,500
105													19.0	1,690	22.0	1,690		

\*This capacity is based upon maximum boom angle.

A6-829-008672



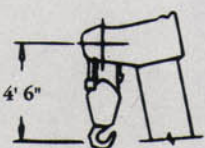
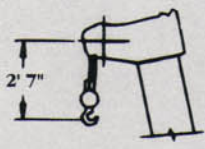
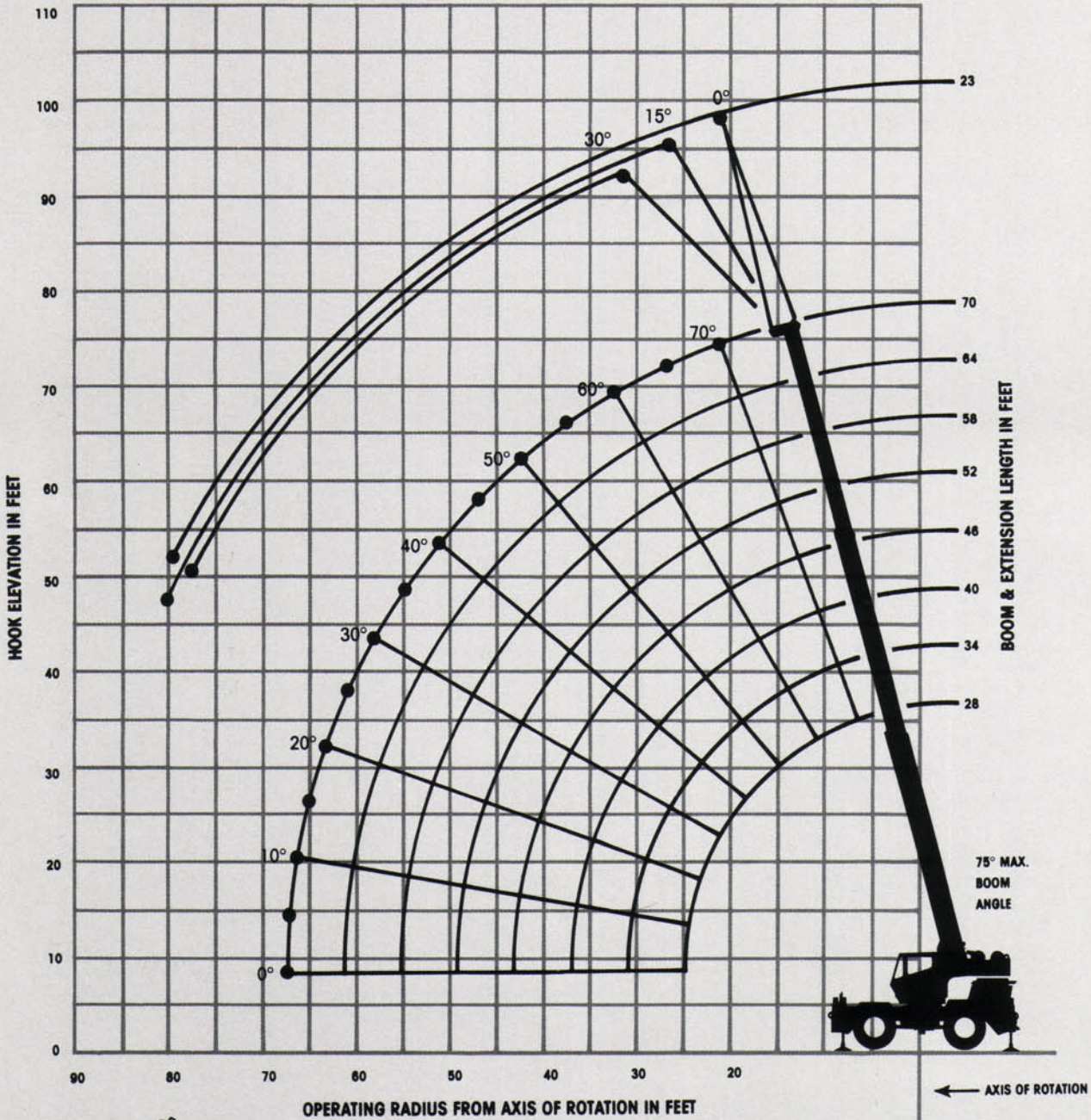


**GROVE**<sup>®</sup>  
worldwide

# RT528C

Rough terrain hydraulic crane  
85% Domestic 28 ft. - 70 ft. full power boom

RANGE DIAGRAM (UNLADEN BOOM)



DIMENSIONS ARE FOR LARGEST GROVE FURNISHED HOOK BLOCK AND HEADACHE BALL WITH ANTI-TWO BLOCK ACTIVATED.



**16.00 X 25 TIRES - 28PR  
ON RUBBER (STATIONARY  
DEFINED ARC OVER FRONT)**

Radius in Feet	Main Boom Length in Feet							
	28	34	40	46	52	58	64	70
10	33,450 (64)	28,550 (69)						
12	28,550 (59.5)	28,550 (65.5)	28,550 (70)	17,100 (73)				
15	23,250 (54.5)	23,250 (59.5)	23,250 (65)	17,100 (69)	13,250 (72)	13,250 (74.5)		
20	14,700 (36.5)	14,700 (49)	14,700 (57)	14,700 (62)	13,250 (66)	13,250 (69.5)	7,900 (72)	
25	10,100 (6)	10,100 (36)	10,100 (47.5)	10,100 (54.5)	10,100 (60)	10,100 (64)	7,900 (67)	
30		7,420 (15.5)	7,420 (36.5)	7,420 (46.5)	7,420 (53)	7,420 (58)	7,400 (62)	7,400 (65)
35			5,610 (20)	5,610 (36.5)	5,610 (45.5)	5,610 (51.5)	5,610 (56.5)	5,610 (60)
40				4,330 (23)	4,330 (36.5)	4,330 (45)	4,330 (50.5)	4,330 (55)
45					3,360 (25)	3,360 (37)	3,360 (44.5)	3,360 (49.5)
50						2,620 (26.5)	2,620 (37)	2,620 (43.5)
55							2,020 (3.5)	2,020 (28)
60								1,530 (13)
65								1,120 (15.5)

A6-829-009115

**23 FT. A-FRAME JIB  
(ON OUTRIGGERS - 360°)**

Main Boom Angle (Deg.)	0° OFFSET		15° OFFSET		30° OFFSET	
	Rad. Ref. (ft.)	Cap. lbs.	Rad. Ref. (ft.)	Cap. lbs.	Rad. Ref. (ft.)	Cap. lbs.
75	27.0	12,000	32.5	7,700	36.7	5,070
70	33.3	10,400	38.1	7,000	41.2	4,800
65	40.2	8,500	44.9	6,300	47.8	4,500
60	47.0	7,400	51.3	5,450	54.0	4,300
55	53.2	6,600	57.3	5,000	59.8	4,100
50	59.2	6,100	62.9	4,700	65.1	3,900
45	64.7	5,160	68.0	4,500	69.9	3,800
40	69.6	4,410	72.6	4,010	74.2	3,700
35	74.0	3,840	76.6	3,530	77.9	3,390
30	77.8	3,400	80.1	3,160		

A6-829-008660

**ON RUBBER (STATIONARY - 360°)**

Radius in Feet	Main Boom Length in Feet							
	28	34	40	46	52	58	64	70
10	22,450 (64)	22,450 (69)						
12	18,350 (59.5)	18,350 (65.5)	16,600 (70)	16,600 (73)				
15	12,500 (51.5)	12,500 (59.5)	12,500 (65)	12,200 (69)	12,200 (72)	12,200 (74.5)		
20	7,410 (36.5)	7,410 (49)	7,410 (57)	7,410 (62)	7,410 (66)	7,410 (69.5)	7,410 (72)	
25	4,650 (6)	4,650 (36)	4,650 (47.5)	4,650 (54.5)	4,650 (60)	4,650 (64)	4,650 (67)	
30		2,930 (15.5)	2,930 (36.5)	2,930 (46.5)	2,930 (53)	2,930 (58)	2,930 (62)	
35			1,740 (20)	1,740 (36.5)	1,740 (45.5)	1,740 (51.5)	1,740 (56.5)	
40				880 (23)	880 (36.5)	880 (45)	880 (50.5)	

A6-829-009116

**PICK & CARRY CAPACITIES (UP TO 2.5 MPH)  
BOOM CENTERED OVER FRONT**

Radius in Feet	Main Boom Length in Feet							
	28	34	40	46	52	58	64	70
10	31,750 (64)							
12	27,450 (59.5)							
15	22,600 (51.5)	22,600 (59.5)	21,000 (65)					
20	14,700 (36.5)	14,700 (49)	14,700 (57)	14,700 (62)	14,700 (66)			
25	10,100 (6)	10,100 (36)	10,100 (47.5)	10,100 (54.5)	10,100 (60)	9,400 (64)		
30		7,420 (15.5)	7,420 (36.5)	7,420 (46.5)	7,420 (53)	7,400 (58)	7,400 (62)	7,400 (65)
35			5,610 (20)	5,610 (36.5)	5,610 (45.5)	5,610 (51.5)	5,610 (56.5)	5,610 (60)
40				4,330 (23)	4,330 (36.5)	4,330 (45)	4,330 (50.5)	4,330 (55)
45					3,360 (25)	3,360 (37)	3,360 (44.5)	3,360 (49.5)
50						2,620 (26.5)	2,620 (37)	2,620 (43.5)
55							2,020 (3.5)	2,000 (28)
60								1,530 (13)
65								1,120 (15.5)

A6-829-009117

**WEIGHT REDUCTIONS FOR  
LOAD HANDLING DEVICES**

<b>23 ft. A-FRAME JIB with 28 ft. - 70 ft. Boom</b>	
*Stowed -	381 lbs.
*Erected -	1,950 lbs.

\*Reduction of main boom capacities

<b>HOOKBLOCKS:</b>	
12 Ton, 1 Sheave	360 lbs.
35 Ton, 4 Sheave	600 lbs.
22 Ton, 3 Sheave	455 lbs.
Auxiliary Boom Head	112 lbs.
5 Ton Headache Ball	172 lbs.

# ZERO DEGREE BOOM ANGLE CHARTS

## ON OUTRIGGERS - 360° 20.5 X 25 / 16.00 X 25 TIRES

Boom Angle	Main Boom Length in Feet							
	28	34	40	46	52	58	64	70
0°	15,286 (25.1)	12,000 (31)	9,230 (37)	7,050 (43)	5,630 (49)	4,440 (55)	3,480 (61)	2,800 (66.6)

## ON RUBBER 20.5 X 25 TIRES

Stationary Capacity Defined Arc (3) Over Front

Boom Angle	Main Boom Length in Feet							
	28	34	40	46	52	58	64	70
0°	9,860 (25.1)	6,940 (31)	5,130 (37)	3,880 (43)	2,980 (49)	2,290 (55)	1,760 (61)	1,350 (66.6)

Stationary Capacity 360° Arc

Boom Angle	Main Boom Length in Feet			
	28	34	40	46
0°	5,030 (25.1)	3,360 (31)	2,300 (37)	1,540 (43)

Pick & Carry Capacities Up to 2.5 MPH Boom Centered (7) Over Front

Boom Angle	Main Boom Length in Feet							
	28	34	40	46	52	58	64	70
0°	8,970 (25.1)	6,870 (31)	5,130 (37)	3,880 (43)	2,980 (49)	2,290 (55)	1,760 (61)	1,350 (66.6)

A6-829-009460

## ON RUBBER 16.00 X 25 TIRES

Stationary Capacity Defined Arc (3) Over Front

Boom Angle	Main Boom Length in Feet							
	28	34	40	46	52	58	64	70
0°	10,100 (25.1)	6,990 (31)	5,060 (37)	3,720 (43)	2,750 (49)	2,020 (55)	1,440 (61)	1,010 (66.6)

Stationary Capacity 360° Arc

Boom Angle	Main Boom Length in Feet		
	28	34	40
0°	4,620 (25.1)	2,650 (31)	1,380 (37)

Pick & Carry Capacities Up to 2.5 MPH Boom Centered (7) Over Front

Boom Angle	Main Boom Length in Feet							
	28	34	40	46	52	58	64	70
0°	10,100 (25.1)	6,990 (31)	5,060 (37)	3,720 (43)	2,750 (49)	2,020 (55)	1,440 (61)	1,010 (66.6)

A6-829-009462

Note: ( ) Reference radii in feet  
Refer to in-cab load chart for notes.