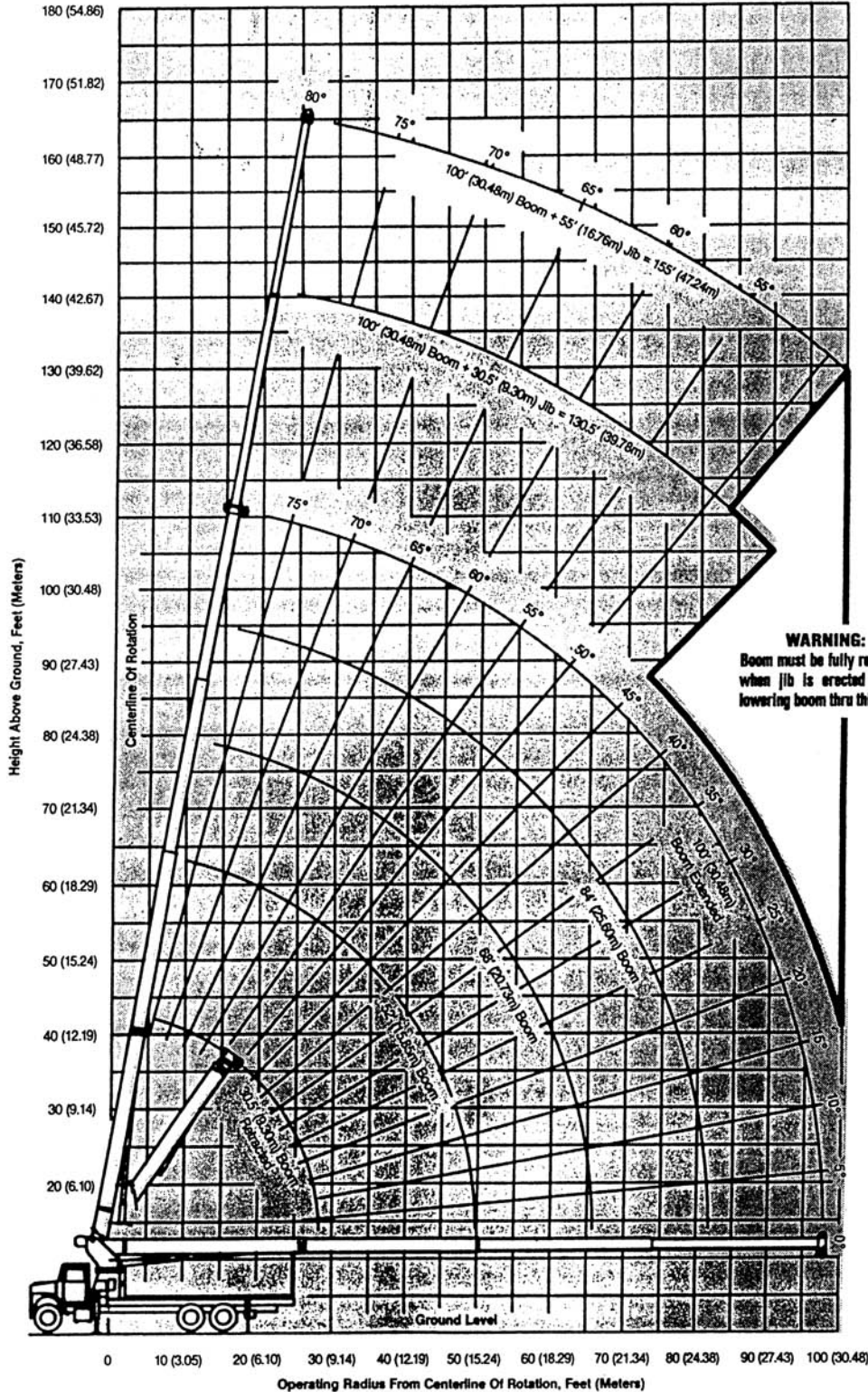




GENERAL SPECIFICATIONS

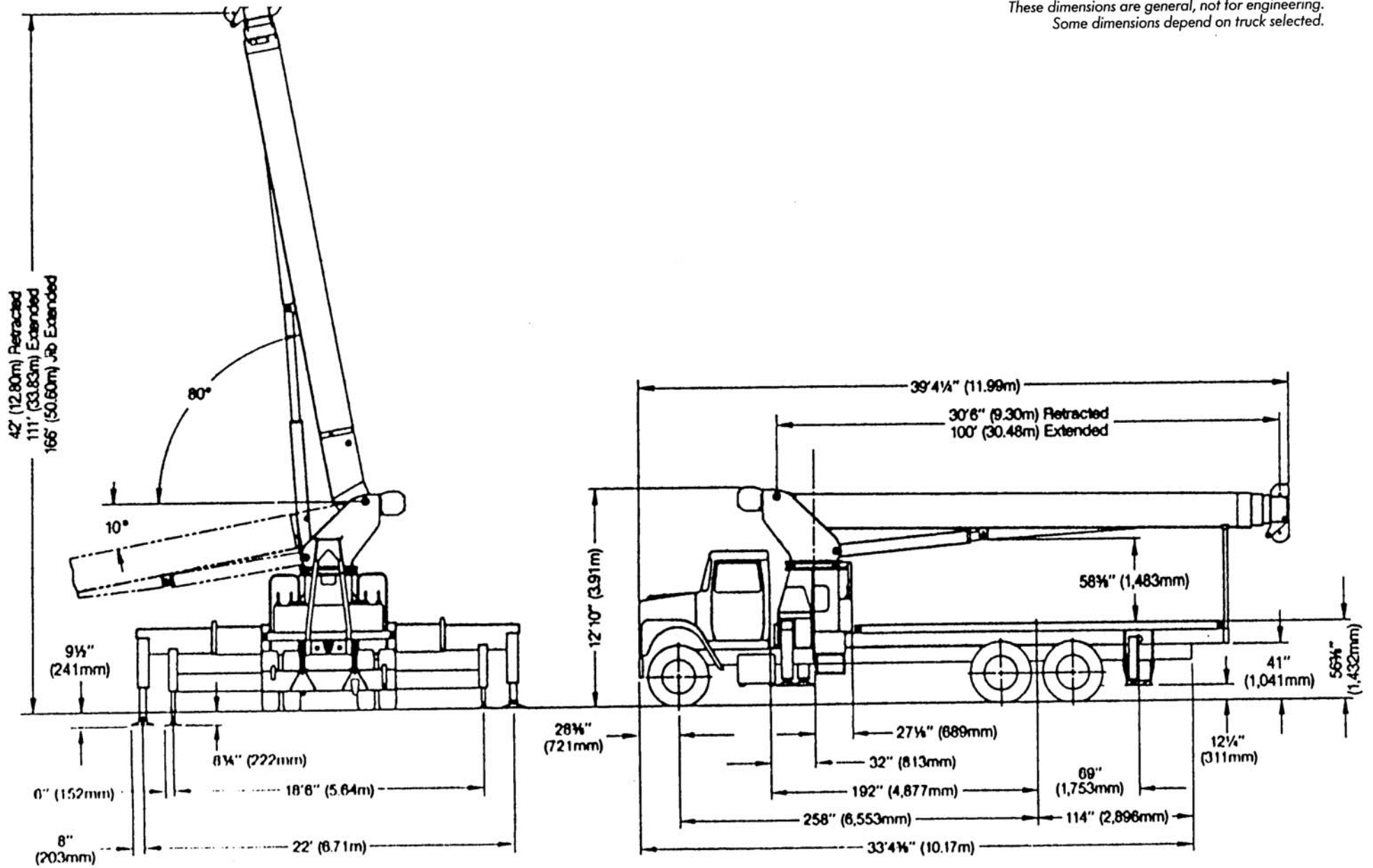
MODEL 30100 TRUCK-MOUNTED CRANE

RANGE DIAGRAM



MANITEX 30100 OUTLINE DIMENSIONS

These dimensions are general, not for engineering.
Some dimensions depend on truck selected.



MODEL 30100 LOAD RATING CHART

This capacity chart is for reference use only and must not be used for a specific serial number crane. Lifting off the main boom point while the swing-around jib is erected is not approved.

MEETS
ANSI B30.5
REQUIREMENTS

OUTRIGGERS AND STABILIZERS EXTENDED																
Operating Radius		Load Rating 30.5' (9.30m) Boom			Load Rating 52' (15.85m) Boom			Load Rating 68' (20.73m) Boom			Load Rating 84' (25.60m) Boom			Load Rating 100' (30.48m) Boom		
		Loaded Bm. Angle	Pounds	Kilograms	Loaded Bm. Angle	Pounds	Kilograms	Loaded Bm. Angle	Pounds	Kilograms	Loaded Bm. Angle	Pounds	Kilograms	Loaded Bm. Angle	Pounds	Kilograms
Foot	Meters															
5.5'	1.68	80°	60,000	27,215												
8'	2.44	75°	45,200	20,502												
10'	3.05	71°	38,700	17,554												
12'	3.66	67°	33,800	15,331	78°	27,100	12,292									
15'	4.57	61°	28,600	12,972	74°	25,200	11,430	79°	23,300	10,568						
20'	6.10	48°	22,500	10,205	68°	19,800	8,981	74°	18,320	8,309	78°	17,040	7,729	80°	14,000	6,350
25'	7.62	32°	16,970	7,697	62°	16,220	7,357	70°	14,940	6,776	74°	13,940	6,323	78°	12,260	5,561
30'	9.14				55°	13,660	6,196	65°	12,580	5,706	71°	11,650	5,284	75°	10,680	4,844
35'	10.67				48°	11,140	5,053	60°	10,850	4,921	67°	10,050	4,558	72°	9,280	4,209
40'	12.19				39°	8,650	3,923	55°	8,790	3,987	63°	8,700	3,946	69°	8,110	3,678
45'	13.72				28°	6,750	3,061	49°	6,910	3,133	59°	7,030	3,188	65°	7,080	3,211
50'	15.24							43°	5,500	2,494	55°	5,630	2,553	62°	5,700	2,585
55'	16.76							36°	4,400	1,995	50°	4,530	2,054	59°	4,610	2,091
60'	18.29							27°	3,530	1,601	46°	3,650	1,655	55°	3,740	1,696
65'	19.81							12°	2,790	1,265	40°	2,950	1,338	51°	3,030	1,374
70'	21.34										34°	2,350	1,065	47°	2,440	1,106
75'	22.86										27°	1,850	839	43°	1,940	879
80'	24.38										15°	1,410	639	38°	1,510	684
85'	25.91													33°	1,130	512
90'	27.43													26°	800	362
Deduction for Stowed Jib																
Fixed Jib			600	272		350	159		270	122		220	100		180	82
Telescopic Jib			900	408		530	240		400	181		330	150		290	132

JIB LOAD RATING IN LBS./KGS. WITH OUTRIGGERS AND STABILIZERS EXTENDED										
Operating Radius		Fixed Jib Load Rating			Telescopic Jib Load Rating					
		30.5' (9.30m) Jib - All Boom Lgths.			30.5' (9.30m) Jib - All Boom Lgths.		55' (16.76m) Jib - All Boom Lgths.			
Foot	Meters	Loaded Bm. Angle	Pounds	Kilograms	Loaded Bm. Angle	Pounds	Kilograms	Loaded Bm. Angle	Pounds	Kilograms
30'	9.14	79°	6,700	3,039	79°	6,400	2,902			
35'	10.67	76°	6,200	2,812	76°	5,850	2,653	80°	4,000	1,814
40'	12.19	74°	5,630	2,553	74°	5,250	2,381	78°	3,850	1,746
45'	13.72	72°	5,060	2,295	72°	4,670	2,118	76°	3,700	1,678
50'	15.24	70°	4,560	2,068	70°	4,160	1,886	74°	3,550	1,610
55'	16.76	67°	4,130	1,873	67°	3,710	1,682	72°	3,310	1,501
60'	18.29	65°	3,730	1,691	65°	3,300	1,496	70°	3,020	1,369
65'	19.81	63°	3,300	1,496	63°	2,860	1,297	68°	2,730	1,238
70'	21.34	60°	2,710	1,229	60°	2,300	1,043	66°	2,480	1,124
75'	22.86	57°	2,200	997	57°	1,800	816	64°	2,240	1,016
80'	24.38	55°	1,760	798	55°	1,370	621	62°	2,030	920
85'	25.91	52°	1,390	630	52°	990	449	60°	1,670	757
90'	27.43	49°	1,060	480	49°	660	299	57°	1,340	607
95'	28.96	46°	770	349				55°	1,040	471
100'	30.48							53°	780	353

INFORMATION: Deductions must be made from rated loads for stowed jib, optional attachments, hooks, and load blocks (see deduction chart). Weights of slings and all other load handling devices shall be considered a part of the load.

Deductions From Rated Loads For Manitex Supplied Load Handling Devices	
Hanger Sheave	50 Lbs. (23 Kgs.)
Overhaul Ball	180 Lbs. (82 Kgs.)
Single-Sheave Load Block	430 Lbs. (195 Kgs.)
Triple-Sheave Load Block	450 Lbs. (204 Kgs.)
Hose Reel	260 Lbs. (118 Kgs.)
Swing-Around Jib	See load chart

DO NOT OPERATE A MANITEX TRUCK-MOUNTED CRANE OR ACCESSORIES WITHIN 10' (3.05m) OF LIVE POWER LINES.

Because of continuing improvements, Manitex reserves the right to change product specifications without notice.

WARNING: Before operating any Manitex crane, the operator must read and understand the owner's manual and other instructions for a specific serial number crane. This chart is only a guide. The notes and warnings are for illustration only and cannot be used to operate a crane.

The operating radius shown in the jib load rating chart is for fully extended boom only. When boom is not fully extended, use only loaded boom angle to determine load rating of jib.

All load ratings below the heavy line on the capacity charts are stability rated capacities, and do not exceed 85% of tipping.

Crane load ratings on outriggers are based on freely suspended loads with the machine leveled and standing on a firm uniform supporting surface. No attempt shall be made to move a load horizontally on the ground in any direction.

Main boom load ratings above the heavy line are based on a constant hoist cylinder pressure, machine structural competence, and do not exceed 85% of tipping. Jib load ratings above the heavy line are based on a constant hoist cylinder pressure, machine structural competence, and do not exceed 85% of tipping.

MANITEX, INC.

STANDARD EQUIPMENT

- 4-section telescopic boom 30'6" (9.30m) to 100' (30.48m)
- Pedestal, turret, rotation bearing & swing system
- 22' (6.71m) subframe
- Out-and-down outriggers
- Out-and-down rear stabilizers
- 3-sheave boom point
- Boom-hoist cylinder
- 2-speed planetary hoist
- Dual operator stations
- Dual-axis operator controls
- Engine start/stop
- Removable boom rest
- 5-ton (4.5-mt) hook & ball
- 372° non-continuous rotation
- 100-gallon (379-liter) hydraulic reservoir
- 3-section vane-type hydraulic pump
- System pressure gauge
- Load moment indicator, audio/visual
- Anti-two-block shutoff
- Audible outrigger/stabilizer motion alarm
- Back-up alarm
- Signal horn
- 335' (102.11m) of 9/16" (14.3mm) EIPS IWRC wire rope
- Finish paint in Manitex colors
- Operator/service/parts manuals

WEIGHTS

Total crane, including hydraulic fluid **Lbs. Kgs.**
 27,000 12,247

Additions:

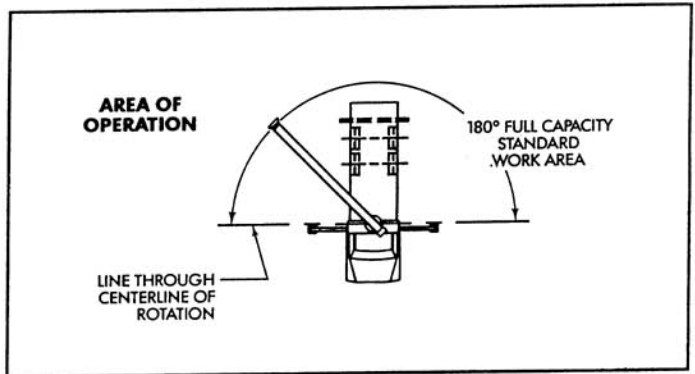
30'6" (9.30m) fixed-length jib 1,120 508
 55' (16.76m) telescopic jib 1,700 771
 15-ton (13.6-mt) single-sheave block 430 195
 30-ton (27.2-mt) triple-sheave block 450 204
 Hanger sheave for 5- and 6-part line 50 23
 22'4" (6.81m) steel or wood bed 2,000 907

TRUCK CHASSIS DATA

Minimum Requirements:

Some configurations and options may increase requirements

Wheelbase	258"	6,553mm
Cab to axle	192"	4,877mm
Front axle gross weight rating	18,000 lbs.	8,165 kgs
Rear axle gross weight rating	38,000 lbs.	17,237 kgs
Frame section modulus.....	25.0 in ³	410 cc
	110,000 psi	758,450 kPa
Nominal frame width	34"	864mm



ALLOWABLE LINE PULL

1-PART LINE	2-PART LINE	3-PART LINE	4-PART LINE	5-PART LINE	6-PART LINE
9,600 Lbs. (4,355 Kgs.) ¹ 9,080 Lbs. (4,119 Kgs.) ² 10,000 Lbs. (4,536 Kgs.) ³	19,200 Lbs. (8,709 Kgs.) ¹ 18,160 Lbs. (8,237 Kgs.) ² 20,000 Lbs. (9,072 Kgs.) ³	28,800 Lbs. (13,064 Kgs.) ¹ 27,240 Lbs. (12,356 Kgs.) ² 30,000 Lbs. (13,608 Kgs.) ³	38,400 Lbs. (17,418 Kgs.) ¹ 36,320 Lbs. (16,475 Kgs.) ² 40,000 Lbs. (18,144 Kgs.) ³	48,000 Lbs. (21,772 Kgs.) ¹ 45,400 Lbs. (20,593 Kgs.) ² 50,000 Lbs. (22,680 Kgs.) ³	57,600 Lbs. (26,127 Kgs.) ¹ 54,480 Lbs. (24,712 Kgs.) ² 60,000 Lbs. (27,216 Kgs.) ³
WARNING: Anti-two block system must be in good operating condition before operating crane. Refer to Owner's Manual. Keep at least 3 wraps of load line on drum at all times.		¹ With 9/16" (14.3mm) 6 x 25 EIPS IWRC (3.5:1 S.F.) 33,600 Lbs. (15,241 Kgs.) Minimum Breaking Strength ² With 5/8" (15.9mm) Rotation Resistant (5.0:1 S.F.) 45,400 Lbs. (20,593 Kgs.) Minimum Breaking Strength ³ With 3/4" (15.9mm) 6 x 25 EIPS IWRC (3.5:1 S.F.) 35,000 Lbs. (15,876 Kgs.) Minimum Breaking Strength			