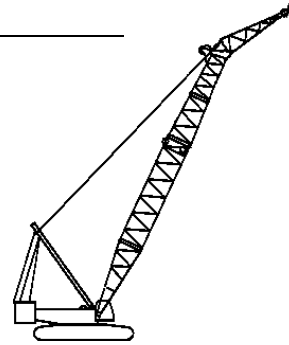


# Liftcrane Boom Extended Upper Point Capacities

**Boom No. 58BRS with 24.9 ft Extended  
Upper Boom Point  
368,000 lb Crane Counterweight  
41,300 lb Auxiliary Counterweight  
120,000 lb Carbody Counterweight  
360 Degree Rating**



## 16000 SERIES 5



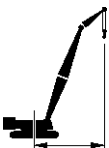
**LIFTING CAPACITIES:** Lifting capacities for various boom lengths and operating radii are for freely suspended loads and do not exceed 75% of a static tipping load. Capacities based on structural competence are denoted by an asterisk (\*).

Upper boom point (upper sheave) capacity for liftcrane service with single part whip line is 30,000 lb or 60,000 lb with two part line. In all cases, upper boom point capacities cannot exceed those listed for extended upper boom point (lower sheave) capacity.

Weight of all load blocks, hooks, weight ball, slings, hoist lines, etc., beneath upper boom point sheaves is considered part of extended upper boom point load. Boom is not to be lowered beyond radii where combined weights are greater than rated capacity. Where no capacity is shown, operation is not intended or approved.

**OPERATING CONDITIONS:** Machine to operate in a level position on a firm uniformly supporting surface. Refer to boom rigging **No. 81016771**, Boom Raising Procedure **No. 8971-A**, Wire Rope Specification chart **No. 8965-A**, Counterweight Arrangement chart **No. 8682-A** and Wind Conditions chart **No. 8688-A**. Crane operator judgment must be used to allow for dynamic load effects of swinging, hoisting or lowering, travel, wind conditions, as well as adverse operating conditions and physical machine depreciation. Refer to Operator's Manual for operating guidelines.

**MACHINE TRAVEL:** Machine to travel on a firm, level and uniformly supporting surface. Boom must be within boom angle range shown in capacity chart. Refer to Maximum Allowable Travel Specification chart **No. 8966-A**



**OPERATING RADIUS:** Operating radius is horizontal distance from axis of rotation to center of vertical hoist line or load block.



**BOOM ANGLE:** Boom angle in degrees ( $^{\circ}$ ) is angle between horizontal and centerline of boom butt and inserts, and is an indication of operating radius. In all cases, operating radius shall govern capacity.




**EXTENDED UPPER BOOM POINT ELEVATION:** Extended upper boom point elevation is vertical distance from ground level to centerline of extended upper boom point (lower sheave) shaft.

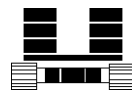
**MACHINE EQUIPMENT:** Machine equipped with 34 ft crawlers, 60 in. treads, 32 ft live mast, 26 part boom hoist reeving, boom support straps, 368,000 lb crane counterweight, auxiliary counterweight tray and two 17,500 lb counterweights, two 30,000 lb and four 15,000 lb carbody counterweights.

With or Without Boom Catwalks
<b>Boom Lengths Lifted Using Boom Raising System</b>
Over End of Blocked Crawlers
Boom Length
292.0 - 351.0 ft
Load block, hook and weight ball on ground until combined weights are within rated capacity of chart.


Optional Block Reeving
When block is reeved with optional 6 or 8 part reeving with wire rope dead end on upper boom point (upper sheave), deduct 3,500 lb from capacities. Refer to reeving diagram <b>No. 81022461</b> for optional reeving.


## Explanation of Symbols


**58BRS**  Boom No. 58 BRS with 24.9 ft  
Extended Upper Boom Point


 Crane Counterweight  
+  
Auxiliary Counterweight  
+  
Carbody Counterweight


 360°  
360 Degree Rating


 Operating Radius  
(see page 1)

 Boom Angle  
(see page 1)

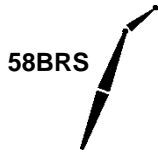
 Extended Upper Boom Point  
Elevation  
(see page 1)

 Lifting Capacities  
(see page 1)

 Boom Length

 Extended Upper Boom Point  
Offset Angle

# 16000 SERIES 5 ANSI B30.5



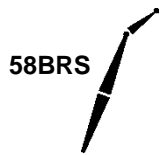
368,000 lb  
+  
41,300 lb  
+  
120,000 lb



292.0 ft

	28°			35°			
	ft	ft	lb	ft	lb	ft	
60	82.1	319.7	255,800 *	82.6	318.7	246,900 *	60
65	81.2	318.8	236,500 *	81.6	317.8	238,300 *	65
70	80.3	317.8	214,400 *	80.7	316.8	216,100 *	70
75	79.4	316.7	195,300 *	79.8	315.7	196,800 *	75
80	78.4	315.5	178,600 *	78.8	314.5	180,100 *	80
85	77.5	314.3	163,900 *	77.9	313.2	165,300 *	85
90	76.6	312.9	151,000 *	77.0	311.9	152,200 *	90
95	75.6	311.5	139,100 *	76.0	310.4	140,600 *	95
100	74.7	309.9	128,400 *	75.1	308.9	129,700 *	100
105	73.7	308.3	118,800 *	74.1	307.3	120,100 *	105
110	72.7	306.6	110,100 *	73.1	305.5	111,400 *	110
115	71.8	304.8	102,200 *	72.2	303.7	103,400 *	115
120	70.8	302.9	95,000 *	71.2	301.8	96,100 *	120
125	69.8	300.9	88,400 *	70.2	299.8	89,400 *	125
130	68.8	298.8	82,300 *	69.2	297.7	83,300 *	130
135	67.9	296.6	76,600 *	68.2	295.5	77,600 *	135
140	66.9	294.3	71,400 *	67.2	293.2	72,300 *	140
145	65.8	291.8	66,500 *	66.2	290.7	67,400 *	145
150	64.8	289.3	62,000 *	65.2	288.2	62,800 *	150
155	63.8	286.7	57,700 *	64.2	285.5	58,500 *	155
160	62.8	283.9	53,800 *	63.1	282.8	54,500 *	160
165	61.7	281.0	50,000 *	62.1	279.9	50,800 *	165
170	60.7	278.0	46,500 *	61.0	276.9	47,200 *	170
175	59.6	274.9	43,200 *	59.9	273.7	43,900 *	175
180	58.5	271.6	40,100 *	58.9	270.5	40,700 *	180
185	57.4	268.3	37,100 *	57.8	267.0	37,700 *	185
190	56.3	264.7	34,300 *	56.6	263.5	34,900 *	190
195	55.2	261.0	31,700 *	55.5	259.8	32,200 *	195
200	54.0	257.2	29,100 *	54.4	255.9	29,600 *	200
205	52.9	253.2	26,700 *	53.2	251.9	27,200 *	205
210	51.7	249.0	24,400 *	52.0	247.7	24,900 *	210
215	50.5	244.6	22,200 *	50.8	243.3	22,700 *	215
220	49.3	240.1	20,100 *	49.6	238.7	20,500 *	220
225	48.0	235.3	18,100 *	48.3	233.9	18,500 *	225
230	46.7	230.4	16,200 *	47.0	228.9	16,500 *	230
235	45.4	225.2	14,300 *	45.7	223.7	14,700 *	235
240	44.1	219.7	12,500 *	44.3	218.2	12,800 *	240
245	42.7	214.0	10,800 *	43.0	212.5	11,100 *	245

# 16000 SERIES 5 ANSI B30.5



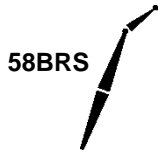
368,000 lb  
+  
41,300 lb  
+  
120,000 lb



301.8 ft

ft	28°			35°			ft
	ft	ft	lb	ft	ft	lb	
60	82.4	329.7	239,900 *	82.8	328.7	233,100 *	60
65	81.5	328.8	234,200 *	81.9	327.8	232,900 *	65
70	80.6	327.9	212,200 *	81.0	326.8	214,000 *	70
75	79.7	326.8	193,200 *	80.1	325.8	194,800 *	75
80	78.8	325.7	176,600 *	79.2	324.6	178,100 *	80
85	77.9	324.4	162,000 *	78.3	323.4	163,400 *	85
90	77.0	323.1	149,000 *	77.4	322.1	150,300 *	90
95	76.1	321.7	137,400 *	76.5	320.7	138,700 *	95
100	75.1	320.2	126,700 *	75.5	319.2	128,200 *	100
105	74.2	318.7	117,100 *	74.6	317.6	118,500 *	105
110	73.3	317.0	108,400 *	73.7	316.0	109,800 *	110
115	72.4	315.3	100,500 *	72.7	314.2	101,800 *	115
120	71.4	313.4	93,300 *	71.8	312.4	94,500 *	120
125	70.5	311.5	86,700 *	70.9	310.4	87,800 *	125
130	69.5	309.5	80,600 *	69.9	308.4	81,600 *	130
135	68.6	307.3	74,900 *	68.9	306.2	75,900 *	135
140	67.6	305.1	69,700 *	68.0	304.0	70,700 *	140
145	66.6	302.8	64,900 *	67.0	301.7	65,800 *	145
150	65.7	300.3	60,300 *	66.0	299.2	61,200 *	150
155	64.7	297.8	56,100 *	65.0	296.7	56,900 *	155
160	63.7	295.2	52,100 *	64.0	294.0	52,900 *	160
165	62.7	292.4	48,400 *	63.0	291.2	49,100 *	165
170	61.7	289.5	44,900 *	62.0	288.3	45,600 *	170
175	60.6	286.5	41,600 *	61.0	285.3	42,300 *	175
180	59.6	283.4	38,500 *	59.9	282.2	39,100 *	180
185	58.5	280.1	35,500 *	58.9	278.9	36,100 *	185
190	57.5	276.8	32,700 *	57.8	275.5	33,300 *	190
195	56.4	273.2	30,100 *	56.7	272.0	30,600 *	195
200	55.3	269.6	27,500 *	55.6	268.3	28,100 *	200
205	54.2	265.7	25,100 *	54.5	264.5	25,600 *	205
210	53.1	261.8	22,800 *	53.4	260.5	23,300 *	210
215	51.9	257.6	20,700 *	52.2	256.3	21,100 *	215
220	50.8	253.3	18,600 *	51.1	252.0	19,000 *	220
225	49.6	248.8	16,600 *	49.9	247.5	17,000 *	225
230	48.4	244.2	14,600 *	48.7	242.8	15,000 *	230
235	47.2	239.3	12,800 *	47.4	237.9	13,100 *	235
240	45.9	234.2	11,000 *	46.2	232.7	11,300 *	240

# 16000 SERIES 5 ANSI B30.5



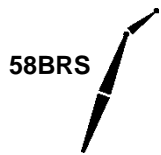
368,000 lb  
+  
41,300 lb  
+  
120,000 lb



311.7 ft

	28°			35°			
	ft	ft	lb	ft	lb	ft	
60	82.6	339.7	236,000 *	83.0	338.7	224,000 *	60
65	81.7	338.8	232,500 *	82.1	337.8	217,600 *	65
70	80.9	337.9	210,600 *	81.3	336.9	212,600 *	70
75	80.0	336.9	191,700 *	80.4	335.8	193,500 *	75
80	79.1	335.8	175,100 *	79.5	334.7	176,800 *	80
85	78.2	334.6	160,500 *	78.6	333.5	162,100 *	85
90	77.4	333.3	147,500 *	77.8	332.3	149,000 *	90
95	76.5	331.9	136,000 *	76.9	330.9	137,400 *	95
100	75.6	330.5	125,300 *	76.0	329.5	126,900 *	100
105	74.7	329.0	115,700 *	75.1	327.9	117,200 *	105
110	73.8	327.4	107,100 *	74.2	326.3	108,400 *	110
115	72.9	325.7	99,200 *	73.3	324.6	100,400 *	115
120	72.0	323.9	91,900 *	72.4	322.8	93,100 *	120
125	71.1	322.0	85,300 *	71.5	321.0	86,500 *	125
130	70.2	320.1	79,200 *	70.5	319.0	80,300 *	130
135	69.2	318.0	73,600 *	69.6	316.9	74,600 *	135
140	68.3	315.9	68,300 *	68.7	314.8	69,300 *	140
145	67.4	313.6	63,500 *	67.7	312.5	64,400 *	145
150	66.4	311.3	59,000 *	66.8	310.2	59,900 *	150
155	65.5	308.8	54,700 *	65.8	307.7	55,600 *	155
160	64.5	306.3	50,800 *	64.9	305.2	51,600 *	160
165	63.6	303.6	47,100 *	63.9	302.5	47,800 *	165
170	62.6	300.9	43,600 *	62.9	299.7	44,300 *	170
175	61.6	298.0	40,300 *	61.9	296.8	41,000 *	175
180	60.6	295.0	37,100 *	60.9	293.8	37,800 *	180
185	59.6	291.9	34,200 *	59.9	290.7	34,800 *	185
190	58.6	288.6	31,400 *	58.9	287.4	32,000 *	190
195	57.5	285.3	28,800 *	57.9	284.0	29,300 *	195
200	56.5	281.7	26,200 *	56.8	280.5	26,800 *	200
205	55.4	278.1	23,800 *	55.8	276.9	24,400 *	205
210	54.4	274.3	21,600 *	54.7	273.1	22,100 *	210
215	53.3	270.4	19,400 *	53.6	269.1	19,800 *	215
220	52.2	266.3	17,300 *	52.5	265.0	17,700 *	220
225	51.1	262.0	15,300 *	51.3	260.7	15,700 *	225
230	49.9	257.6	13,400 *	50.2	256.2	13,800 *	230
235	48.8	253.0	11,500 *	49.0	251.6	11,900 *	235
240				47.8	246.8	10,100 *	240

# 16000 SERIES 5 ANSI B30.5



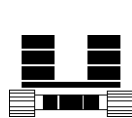
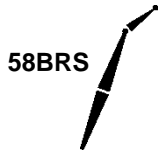
368,000 lb  
+  
41,300 lb  
+  
120,000 lb



321.5 ft

	28°			35°			
	ft	ft	lb	ft	lb	ft	
60	82.8	349.7	233,100 *				60
65	82.0	348.8	230,200 *	82.4	347.8	211,400 *	65
70	81.1	347.9	208,400 *	81.5	346.9	210,500 *	70
75	80.3	346.9	189,600 *	80.7	345.9	191,500 *	75
80	79.4	345.8	173,100 *	79.8	344.8	174,800 *	80
85	78.6	344.7	158,500 *	79.0	343.7	160,200 *	85
90	77.7	343.5	145,600 *	78.1	342.4	147,200 *	90
95	76.9	342.1	134,100 *	77.3	341.1	135,600 *	95
100	76.0	340.8	123,700 *	76.4	339.7	125,300 *	100
105	75.1	339.3	114,100 *	75.5	338.2	115,600 *	105
110	74.3	337.7	105,400 *	74.6	336.7	106,800 *	110
115	73.4	336.1	97,500 *	73.8	335.0	98,800 *	115
120	72.5	334.4	90,300 *	72.9	333.3	91,600 *	120
125	71.6	332.6	83,700 *	72.0	331.5	84,900 *	125
130	70.8	330.7	77,600 *	71.1	329.6	78,700 *	130
135	69.9	328.7	71,900 *	70.2	327.6	73,000 *	135
140	69.0	326.6	66,700 *	69.3	325.5	67,700 *	140
145	68.1	324.4	61,900 *	68.4	323.3	62,800 *	145
150	67.2	322.2	57,300 *	67.5	321.1	58,300 *	150
155	66.2	319.8	53,100 *	66.6	318.7	54,000 *	155
160	65.3	317.3	49,200 *	65.6	316.2	50,000 *	160
165	64.4	314.8	45,400 *	64.7	313.6	46,200 *	165
170	63.4	312.1	41,900 *	63.8	311.0	42,700 *	170
175	62.5	309.3	38,700 *	62.8	308.2	39,400 *	175
180	61.5	306.4	35,500 *	61.9	305.3	36,200 *	180
185	60.6	303.5	32,600 *	60.9	302.3	33,300 *	185
190	59.6	300.3	29,800 *	59.9	299.1	30,400 *	190
195	58.6	297.1	27,200 *	58.9	295.9	27,800 *	195
200	57.6	293.7	24,700 *	57.9	292.5	25,200 *	200
205	56.6	290.3	22,300 *	56.9	289.0	22,800 *	205
210	55.6	286.6	20,000 *	55.9	285.4	20,500 *	210
215	54.5	282.9	17,800 *	54.8	281.6	18,300 *	215
220	53.5	279.0	15,700 *	53.8	277.7	16,200 *	220
225	52.4	274.9	13,700 *	52.7	273.6	14,200 *	225
230	51.3	270.7	11,800 *	51.6	269.4	12,200 *	230
235	50.2	266.3	10,000 *	50.5	265.0	10,400 *	235

# 16000 SERIES 5 ANSI B30.5



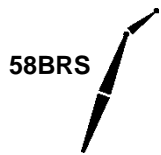
368,000 lb  
+  
41,300 lb  
+  
120,000 lb



331.4 ft

	28°			35°			
	ft	ft	lb	ft	lb	ft	
65	82.2	358.8	220,100 *	82.6	357.8	205,100 *	65
70	81.4	357.9	211,500 *	81.8	356.9	202,200 *	70
75	80.6	357.0	192,600 *	80.9	355.9	194,500 *	75
80	79.7	355.9	176,000 *	80.1	354.9	177,800 *	80
85	78.9	354.8	161,400 *	79.3	353.8	163,000 *	85
90	78.1	353.6	148,000 *	78.5	352.6	149,800 *	90
95	77.2	352.3	136,000 *	77.6	351.3	137,700 *	95
100	76.4	351.0	125,300 *	76.8	349.9	126,900 *	100
105	75.6	349.5	115,700 *	75.9	348.5	117,200 *	105
110	74.7	348.0	107,000 *	75.1	347.0	108,400 *	110
115	73.9	346.5	99,000 *	74.2	345.4	100,300 *	115
120	73.0	344.8	91,800 *	73.4	343.7	93,000 *	120
125	72.2	343.0	85,100 *	72.5	342.0	86,300 *	125
130	71.3	341.2	79,000 *	71.7	340.1	80,100 *	130
135	70.5	339.3	73,300 *	70.8	338.2	74,400 *	135
140	69.6	337.3	68,100 *	69.9	336.2	69,100 *	140
145	68.7	335.2	63,200 *	69.1	334.1	64,200 *	145
150	67.8	333.0	58,700 *	68.2	331.9	59,600 *	150
155	66.9	330.7	54,400 *	67.3	329.6	55,300 *	155
160	66.0	328.3	50,500 *	66.4	327.2	51,300 *	160
165	65.1	325.8	46,700 *	65.5	324.7	47,500 *	165
170	64.2	323.3	43,200 *	64.6	322.1	44,000 *	170
175	63.3	320.6	39,900 *	63.7	319.4	40,700 *	175
180	62.4	317.8	36,800 *	62.7	316.6	37,500 *	180
185	61.5	314.9	33,900 *	61.8	313.8	34,500 *	185
190	60.5	311.9	31,100 *	60.8	310.7	31,700 *	190
195	59.6	308.8	28,400 *	59.9	307.6	29,000 *	195
200	58.6	305.6	25,900 *	58.9	304.4	26,500 *	200
205	57.7	302.2	23,500 *	58.0	301.0	24,000 *	205
210	56.7	298.8	21,200 *	57.0	297.5	21,700 *	210
215	55.7	295.2	19,000 *	56.0	293.9	19,500 *	215
220	54.7	291.4	16,900 *	55.0	290.2	17,400 *	220
225	53.6	287.6	14,900 *	53.9	286.3	15,400 *	225
230	52.6	283.5	13,000 *	52.9	282.2	13,500 *	230
235	51.6	279.4	11,200 *	51.8	278.1	11,600 *	235

# 16000 SERIES 5 ANSI B30.5



368,000 lb  
+  
41,300 lb  
+  
120,000 lb

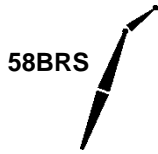


341.2 ft

	28°			35°			
	ft	ft	lb	ft	ft	lb	
65	82.4	368.8	200,900 *	82.8	367.8	189,700 *	65
70	81.6	367.9	197,500 *	82.0	366.9	186,700 *	70
75	80.8	367.0	191,700 *	81.2	365.9	183,800 *	75
80	80.0	366.0	175,200 *	80.4	364.9	177,000 *	80
85	79.2	364.9	160,700 *	79.6	363.8	162,400 *	85
90	78.4	363.7	147,700 *	78.8	362.7	149,400 *	90
95	77.6	362.5	135,700 *	78.0	361.4	137,400 *	95
100	76.8	361.2	125,000 *	77.1	360.1	126,600 *	100
105	76.0	359.8	115,400 *	76.3	358.7	116,900 *	105
110	75.2	358.3	106,700 *	75.5	357.3	108,100 *	110
115	74.3	356.8	98,700 *	74.7	355.7	100,100 *	115
120	73.5	355.2	91,500 *	73.9	354.1	92,700 *	120
125	72.7	353.5	84,800 *	73.0	352.4	86,000 *	125
130	71.8	351.7	78,700 *	72.2	350.6	79,800 *	130
135	71.0	349.8	73,100 *	71.3	348.7	74,100 *	135
140	70.2	347.9	67,800 *	70.5	346.8	68,800 *	140
145	69.3	345.8	63,000 *	69.7	344.7	63,900 *	145
150	68.5	343.7	58,400 *	68.8	342.6	59,300 *	150
155	67.6	341.5	54,200 *	67.9	340.4	55,100 *	155
160	66.7	339.2	50,200 *	67.1	338.1	51,100 *	160
165	65.9	336.8	46,500 *	66.2	335.7	47,300 *	165
170	65.0	334.3	43,000 *	65.3	333.2	43,800 *	170
175	64.1	331.7	39,700 *	64.4	330.6	40,400 *	175
180	63.2	329.1	36,600 *	63.5	327.9	37,300 *	180
185	62.3	326.3	33,600 *	62.6	325.1	34,300 *	185
190	61.4	323.4	30,800 *	61.7	322.2	31,500 *	190
195	60.5	320.4	28,200 *	60.8	319.2	28,800 *	195
200	59.6	317.3	25,700 *	59.9	316.1	26,300 *	200
205	58.6	314.1	23,300 *	58.9	312.9	23,800 *	205
210	57.7	310.7	21,000 *	58.0	309.5	21,500 *	210
215	56.7	307.3	18,800 *	57.0	306.1	19,300 *	215
220	55.8	303.7	16,700 *	56.1	302.5	17,200 *	220
225	54.8	300.0	14,700 *	55.1	298.7	15,200 *	225
230	53.8	296.1	12,800 *	54.1	294.9	13,300 *	230
235	52.8	292.2	11,000 *	53.1	290.9	11,400 *	235



# 16000 SERIES 5 ANSI B30.5



368,000 lb  
+  
41,300 lb  
+  
120,000 lb



351.0 ft

	28°			35°			
	ft	ft	lb	ft	lb	ft	
65	82.6	378.8	193,800 *	82.2	376.9	182,200 *	65
70	81.8	377.9	192,100 *	81.4	376.0	179,300 *	70
75	81.1	377.0	189,300 *	80.6	375.0	175,600 *	75
80	80.3	376.0	173,700 *	79.9	373.9	161,000 *	80
85	79.5	375.0	159,300 *	79.1	372.8	148,000 *	85
90	78.7	373.8	146,400 *	78.3	371.6	136,200 *	90
95	77.9	372.6	134,500 *	77.5	370.3	125,400 *	95
100	77.1	371.4	123,800 *	76.7	369.0	115,600 *	100
105	76.4	370.0	114,100 *	75.9	367.5	106,800 *	105
110	75.6	368.6	105,400 *	75.1	366.0	98,800 *	110
115	74.8	367.1	97,500 *	74.3	364.4	91,500 *	115
120	74.0	365.5	90,200 *	73.5	362.8	84,800 *	120
125	73.2	363.9	83,600 *	72.7	361.1	78,600 *	125
130	72.3	362.1	77,400 *	71.9	359.2	72,900 *	130
135	71.5	360.3	71,800 *	71.0	357.3	67,600 *	135
140	70.7	358.4	66,500 *	70.2	355.4	62,700 *	140
145	69.9	356.5	61,700 *	69.4	353.3	58,100 *	145
150	69.1	354.4	57,100 *	68.6	351.2	53,800 *	150
155	68.2	352.3	52,900 *	67.7	348.9	49,800 *	155
160	67.4	350.0	48,900 *	66.9	346.6	46,000 *	160
165	66.6	347.7	45,200 *	66.0	344.2	42,500 *	165
170	65.7	345.3	41,700 *	65.2	341.7	39,200 *	170
175	64.9	342.8	38,400 *	64.3	339.1	36,000 *	175
180	64.0	340.2	35,300 *	63.4	336.4	33,000 *	180
185	63.1	337.5	32,300 *	62.6	333.6	30,200 *	185
190	62.2	334.8	29,600 *	61.7	330.7	27,600 *	190
195	61.4	331.9	26,900 *	60.8	327.7	25,000 *	195
200	60.5	328.9	24,400 *	59.9	324.6	22,600 *	200
205	59.6	325.8	22,000 *	59.0	321.4	20,300 *	205
210	58.7	322.6	19,700 *	58.0	318.0	18,100 *	210
215	57.7	319.2	17,600 *	57.1	314.6	16,000 *	215
220	56.8	315.8	15,500 *	56.2	311.0	14,000 *	220
225	55.9	312.2	13,500 *	55.2	307.3	12,100 *	225
230	54.9	308.5	11,600 *	54.2	303.4	10,200 *	230
235							235