

**GUAY**

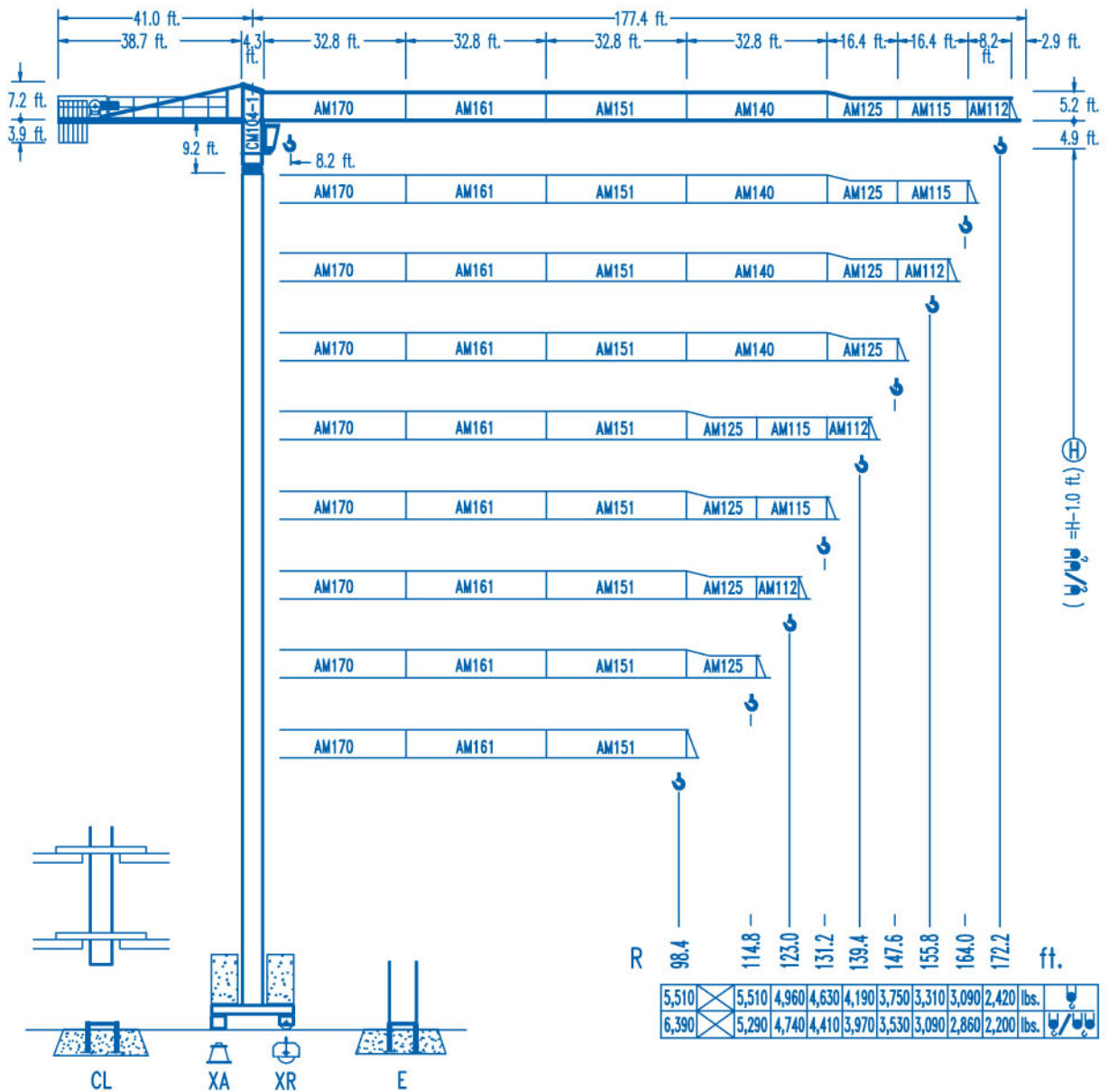
**LC 5211**



**LINDEN**

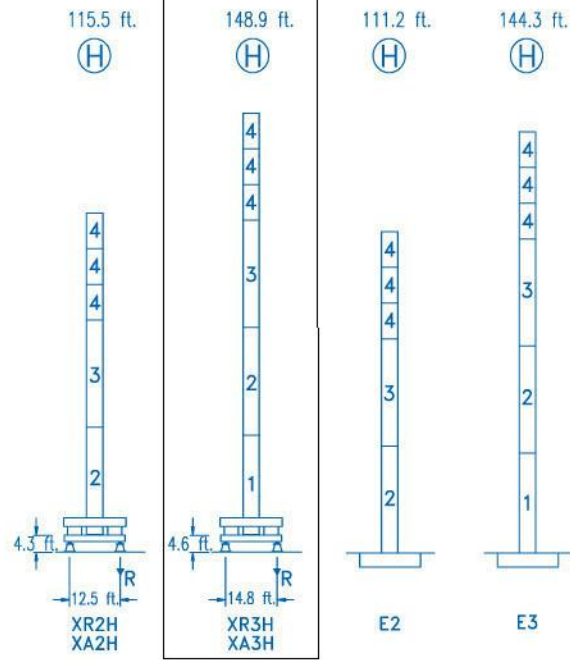
# LC-5211

11,020 lbs.



CE  
DIN 15018 H1 B3

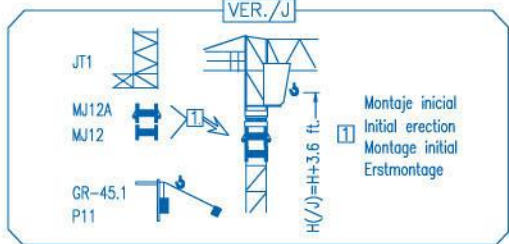
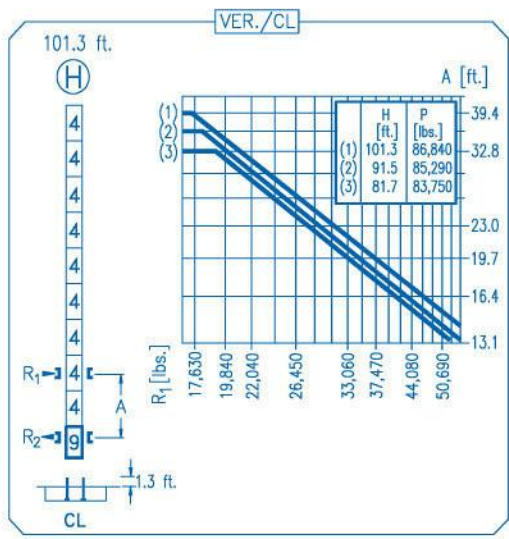
R	R(Cmax)	Cmax	65.6	82.0	98.4	114.8	123.0	131.2	139.4	147.6	155.8	164.0	172.2	ft.
172.2	87.9 ft.	5,510	5,510	5,510	4,830	4,010	3,700	3,420	3,170	2,950	2,750	2,580	2,420	ft.
	46.6 ft.	11,020	7,450	5,730	4,580	3,790	3,480	3,200	2,950	2,730	2,530	2,360	2,200	lbs.
164.0	101.0 ft.	5,510	5,510	5,510	5,510	4,740	4,360	4,060	3,770	3,500	3,280	3,090		
	53.5 ft.	11,020	8,730	6,740	5,540	4,520	4,140	3,830	3,550	3,280	3,060	2,860		
155.8	101.4 ft.	5,510	5,510	5,510	5,510	4,760	4,390	4,080	3,790	3,530	3,310	3,090		
	53.5 ft.	11,020	8,770	6,790	5,470	4,540	4,170	3,860	3,570	3,310	3,090			
147.6	106.3 ft.	5,510	5,510	5,510	5,510	5,050	4,650	4,320	4,010	3,750				
	56.1 ft.	11,020	9,260	7,160	5,800	4,830	4,430	4,100	3,790	3,530				
139.4	110.2 ft.	5,510	5,510	5,510	5,510	5,240	4,850	4,500	4,190					
	58.4 ft.	11,020	9,650	7,470	6,040	5,020	4,630	4,280	3,970					
131.2	112.8 ft.	5,510	5,510	5,510	5,510	5,400	4,980	4,630						
	59.7 ft.	11,020	9,920	7,690	6,210	5,180	4,760	4,410						
123.0	112.2 ft.	5,510	5,510	5,510	5,510	5,510	5,380	4,960						
	59.4 ft.	11,020	9,850	7,650	6,170	5,160	4,740							
114.8	114.8 ft.	5,510	5,510	5,510	5,510	5,510								
	60.7 ft.	11,020	10,090	7,850	6,350	5,290								
98.4	98.4 ft.	5,510	5,510	5,510	5,510									
	61.0 ft.	11,020	10,160	7,890	6,390									



N	Ref.	h
1	MT123	33.1 ft.
2	MH124A	38.7 ft.
3	MH124	38.7 ft.
4	MH121	9.8 ft.
9	CL20	7.2 ft.

MH124=(4)MH121-0.6 ft.

- H=H+0.6 ft.
- H=H
- H=H
- H=H-0.6 ft.



<b>R. máx.</b>	En servicio In operation En service In Betrieb	<b>XR2H ..... 96,650 lbs.</b>
		<b>XR3H .... 144,620 lbs.</b>

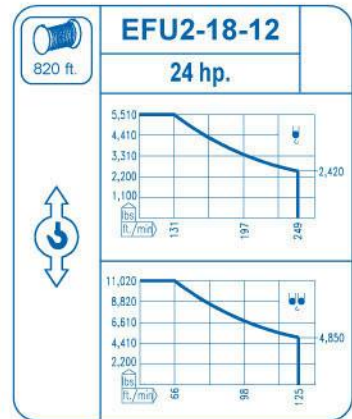
<b>R. máx.</b>	Fuera de servicio Out of service Hors service Ausser Betrieb	<b>XR2H ..... 89,730 lbs.</b>
		<b>XR3H .... 101,630 lbs.</b>

**CS2-1.9**  
3 hp.  
66 ft./min  
189 ft./min

**CFU-2.2**  
3 hp.  
0 ↻ 262 ft./min

**GR-9.0**  
66 ft.lbs.  
0 ↻ 0,8 rpm

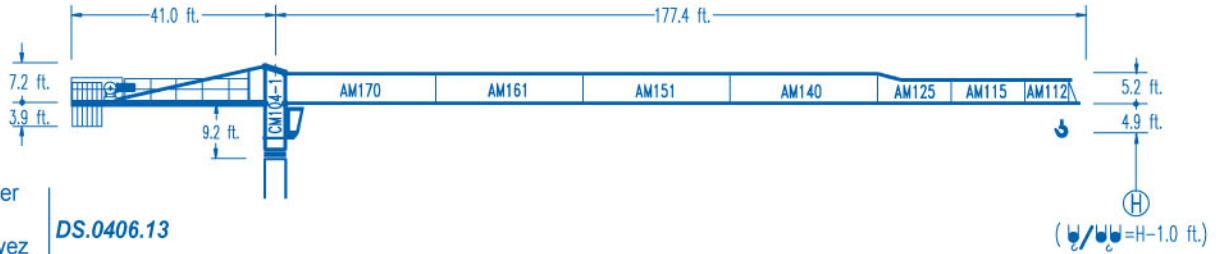
<b>TS2-4.5</b>	<b>TS2-5.5</b>
2x33 ft.lbs.	2x40 ft.lbs.
0 ↻ 78 ft./min	
<b>XR2H</b>	<b>XR3H</b>



Tensión de alimentación Operating voltage Tension de service Betriebsspannung	<b>480 V</b> <b>3 ph</b> <b>60 Hz</b>
----------------------------------------------------------------------------------------	---------------------------------------------

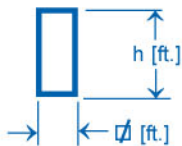
# LC-521 1

5.2 ft.



Configuraciones ver  
Configuration see  
Configurations voyez  
Komponenten siehe

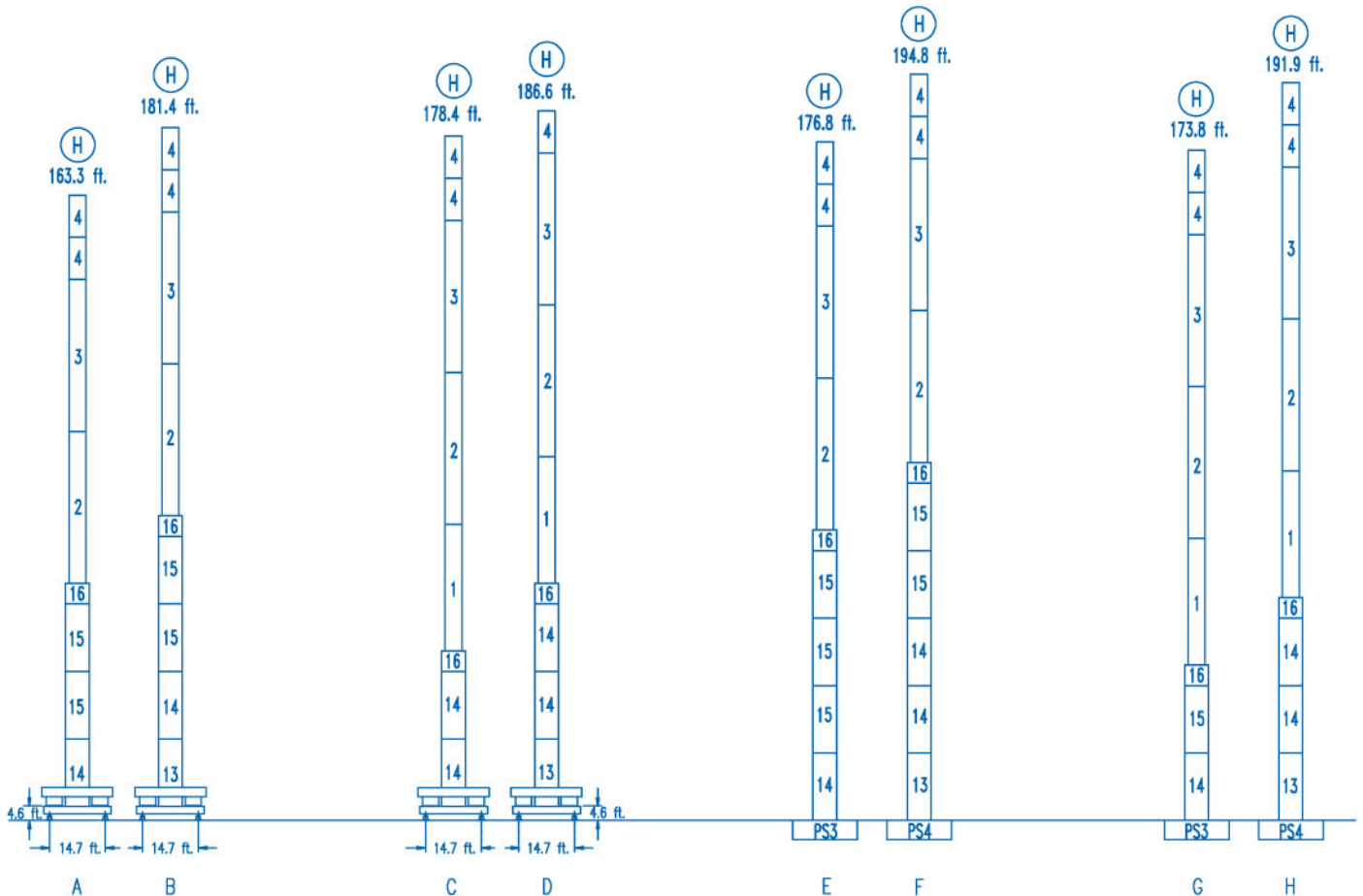
DS.0406.13



n°	Ref.	∅	h	n°	Ref.	∅	h	n°	Ref.	∅	h
1	MT123	3.9	33.1	10	S15	5.2	18.0	14	S13	5.2	18.0
2	MH124A	3.9	38.7	11	TS15	5.2	18.0	15	S12	5.2	18.0
3	MH124	3.9	38.7	12	S14	5.2	18.0	16	TMS13	5.2	3.3
4	MH121	3.9	9.8	13	TS14	5.2	18.0				

Grúa con cabina altura bajo gancho  
Crane with cabin height under hook  
Grue avec cabine hauteur sous crochet  
Kran mit Kabine Hakenhöhe

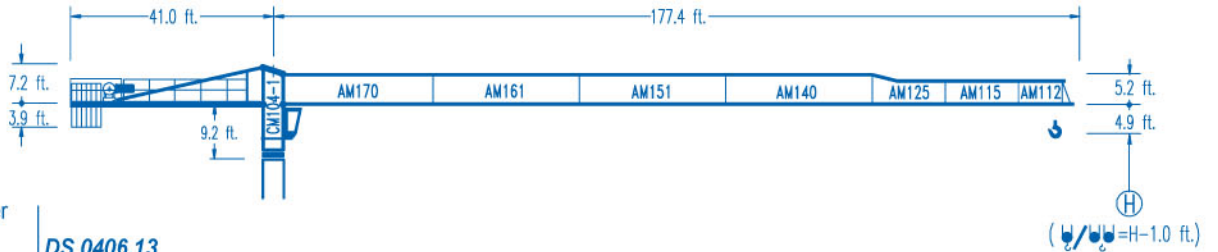
H - 9.8 ft.





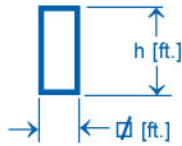
# LC-5211

6.6 ft.



Configuraciones ver  
Configuration see  
Configurations voyez  
Komponenten siehe

DS.0406.13



n°	Ref.	∅	h	n°	Ref.	∅	h	n°	Ref.	∅	h
1	MT123	3.9	33.1	10	S25	6.6	18.0	14	S23	6.6	18.0
2	MH124A	3.9	38.7	11	TS25	6.6	18.0	15	S22	6.6	18.0
3	MH124	3.9	38.7	12	S24	6.6	18.0	16	TMS23	6.6	3.3
4	MH121	3.9	9.8	13	TS24	6.6	18.0				

Grúa con cabina altura bajo gancho  
Crane with cabin height under hook  
Grue avec cabine hauteur sous crochet  
Kran mit Kabine Hakenhöhe

(H) - 9.8 ft.

