

GUAY

**MANNESMANN
DEMAG**

180 ton Telescopic Crane

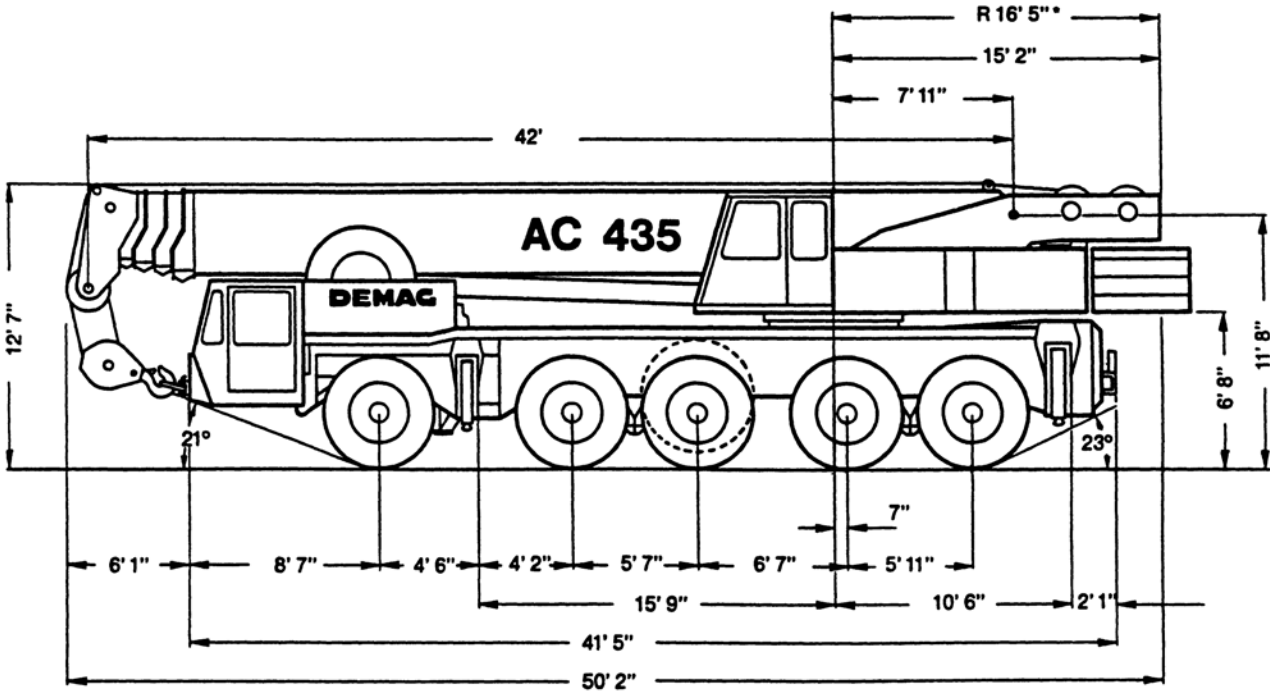
Demag AC 435



180-01

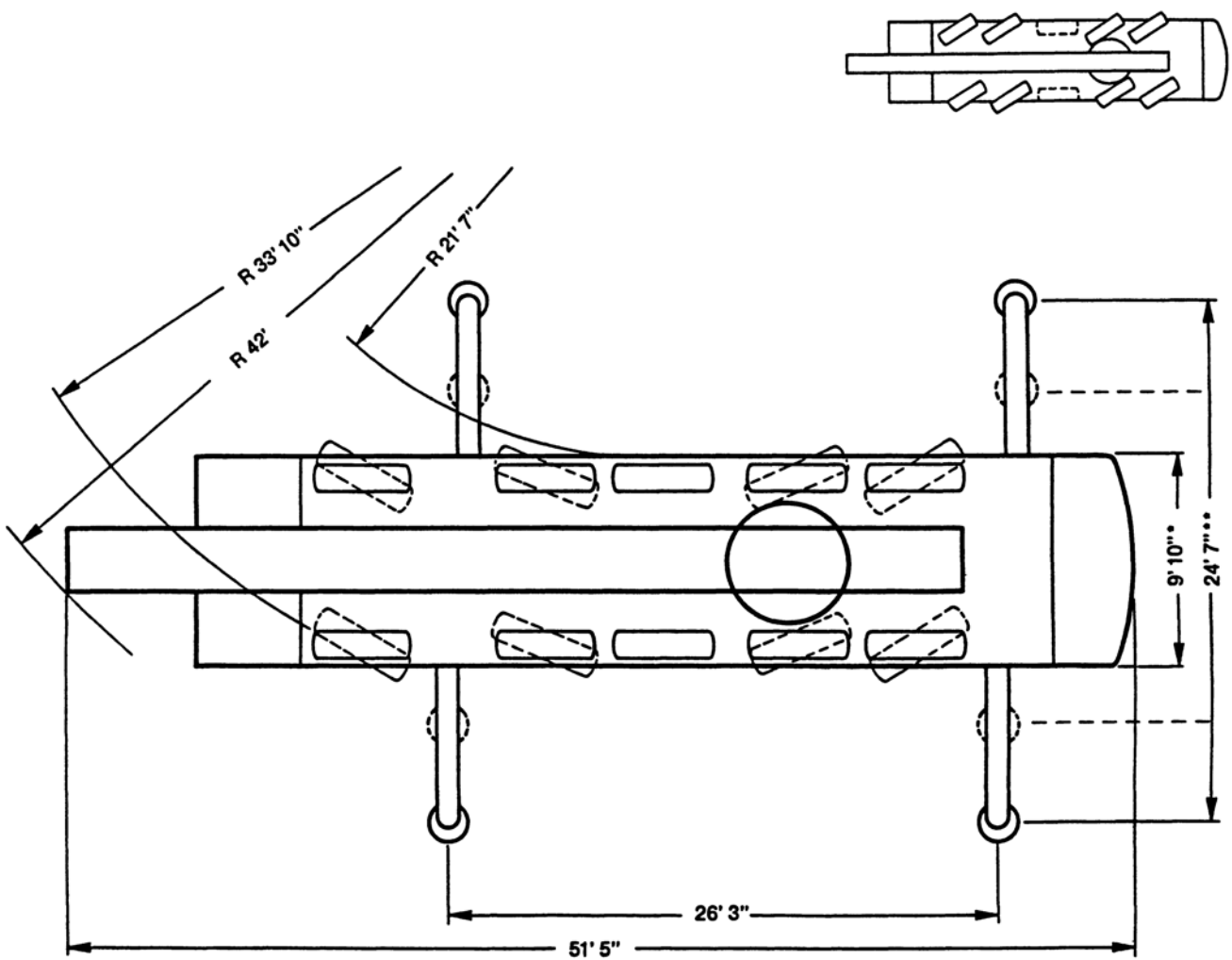
103 500 lbs. Counterweight

Dimensions



* Width with more than 59,000 lb of counterweight: 16' 5"; tall swing: 16' 11"

Dimensions



- Width with more than 59,000 lb of counterweight: 16' 5", tail swing: 16' 11"
- Duties for outrigger base 16' upon request

Specifications

Working speeds (infinitely variable)

Units	Normal speed	High speed	Single line pull	Length of hoist rope
Hoist I	197 ft/min	394 ft/min	16,100 lb	984 ft
Hoist II	197 ft/min	394 ft/min	16,100 lb	853 ft
Slewing	max 2 rpm			
Telescoping speed	42 ft - 164 ft: 110 s			
Boom elevation	-2° - +83°: 60 s			

Carrier performance

Travel speeds	
Reverse	0 3 mph
Forward	0 43 mph
Gradeability in travel order	max 60%
Ground clearance	1' 3"

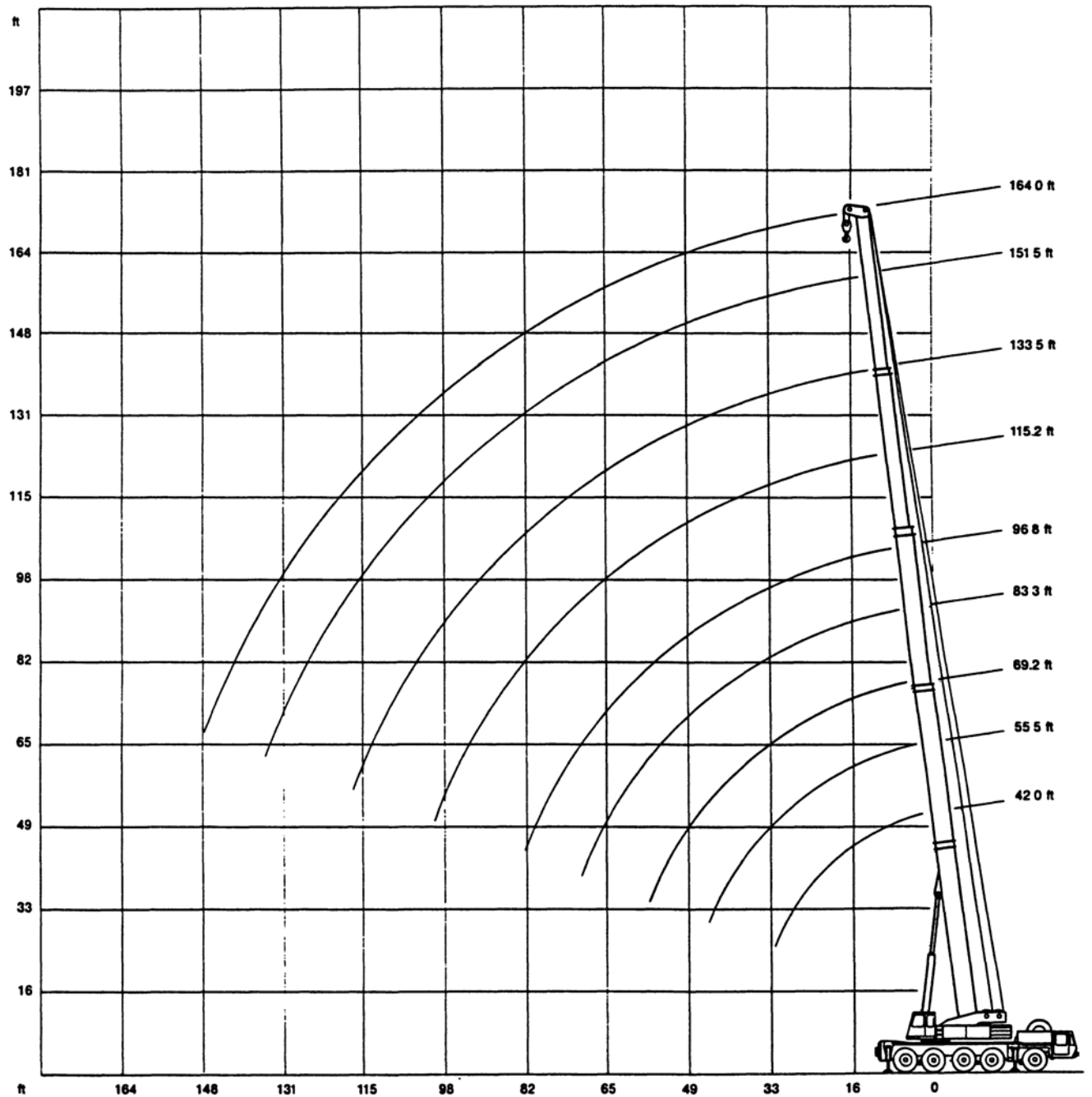
Hook block/Single line hook

Type	Capacity	Number of sheaves	Number of lines	Weight	"D"
160*)	360,000 lb	11	22	4,400 lb	8 ft
80	194,000 lb	5	11	2,680 lb	8 ft
63	123,000 lb	3	7	2,320 lb	8 ft
25	53,000 lb	1	3	1,670 lb	8 ft
8	17,600 lb	Single line hook	1	815 lb	6 ft

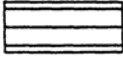
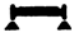


*) heavy-duty attachment is required, without heavy-duty attachment: capacity 220,000 lb (14 lines)

Working range main boom



Lifting capacities main boom in 1,000 lb

103,500 lb   360° 85%

Radius ft	Main boom								
	42.0 ft	55.5 ft*	69.2 ft*	83.3 ft*	96.8 ft*	115.2 ft	133.5 ft	151.5 ft	164.0 ft
10.0	360.0 ¹⁾ /327.0 ²⁾	198.0	-	-	-	-	-	-	-
11.0	308.0 ²⁾	198.0	198.0	-	-	-	-	-	-
13.0	277.0	198.0	198.0	165.0	132.0	-	-	-	-
15.0	251.0	198.0	198.0	164.5	132.0	-	-	-	-
16.0	243.0	198.0	198.0	161.0	132.0	83.5	-	-	-
19.0	215.0	198.0	194.5	149.5	132.0	83.5	79.0	-	-
23.0	180.5	178.0	175.0	134.5	123.5	83.5	79.0	61.5	-
26.0	159.5	156.5	155.0	124.5	116.5	83.5	78.0	61.5	46.2
29.0	141.0	139.5	137.5	116.0	109.5	83.5	75.5	61.5	46.2
33.0	-	120.5	118.5	105.5	100.5	83.5	71.5	61.0	46.2
39.0	-	98.0	96.5	91.5	88.0	75.5	66.5	57.5	46.2
46.0	-	-	75.0	77.0	75.5	67.0	60.5	53.3	46.2
52.0	-	-	61.5	63.0	62.5	60.5	55.7	49.2	44.2
59.0	-	-	-	51.2	50.8	54.5	50.5	44.3	41.4
65.0	-	-	-	43.5	42.9	48.4	45.8	40.7	38.6
72.0	-	-	-	-	35.8	41.4	41.5	36.9	35.5
79.0	-	-	-	-	29.9	35.5	35.7	33.6	32.2
85.0	-	-	-	-	-	31.3	31.5	30.7	29.4
92.0	-	-	-	-	-	27.2	27.4	27.4	26.8
98.0	-	-	-	-	-	24.4	24.6	24.4	24.2
105.0	-	-	-	-	-	-	21.3	21.3	20.9
111.0	-	-	-	-	-	-	19.1	18.9	18.7
118.0	-	-	-	-	-	-	-	16.7	16.1
124.0	-	-	-	-	-	-	-	14.9	14.3
131.0	-	-	-	-	-	-	-	13.0	12.4
138.0	-	-	-	-	-	-	-	-	10.9
144.0	-	-	-	-	-	-	-	-	9.5

Boom extension sequence

									%
Tele 1	0	45	90	68	90	60	75	90	100
Tele 2	0	0	0	68	90	60	75	90	100
Tele 3	0	0	0	0	0	60	75	90	100
Tele 4	0	0	0	0	0	60	75	90	100

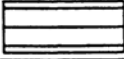

*) Tele 1 pinned

1) static test load only

2) only over rear!

Duties above 220,000 lb with heavy-duty attachment only

Lifting capacities main boom in 1,000 lb

59,500 lb   **360°** **85%**

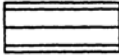
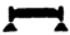
Radius ft	Main boom												Over rear		
	42.0 ft	55.5 ft*	69.2 ft*	83.3 ft*	96.8 ft*	115.2 ft	133.5 ft	151.5 ft	164.0 ft	42.0 ft	69.2 ft	1,000 lb			
10.0	316.0	198.0	-	-	-	-	-	-	-	-	-	-	-	-	-
11.0	299.0	198.0	198.0	-	-	-	-	-	-	-	-	-	-	-	-
13.0	268.0	198.0	198.0	165.0	77.0	132.0	77.0	-	-	-	-	-	-	-	-
15.0	244.0	198.0	198.0	164.5	77.0	132.0	77.0	-	-	-	-	-	-	43.0	39.7
16.0	233.0	198.0	198.0	161.0	77.0	132.0	77.0	83.5	66.0	-	-	-	-	40.4	37.1
19.0	200.0	191.5	190.5	149.5	77.0	132.0	77.0	83.5	66.0	79.0	41.8	-	-	34.0	30.5
23.0	164.5	161.5	160.0	134.5	77.0	123.5	76.5	83.5	64.5	79.0	41.8	61.5	-	27.2	23.7
26.0	143.0	140.0	138.0	124.5	77.0	116.5	73.0	83.5	61.5	78.0	41.8	61.5	46.2	23.2	19.9
29.0	<u>125.5</u>	122.5	120.0	116.0	77.0	109.5	69.0	83.5	58.3	75.5	41.8	61.5	46.2	19.9	16.6
33.0	-	98.5	96.0	98.0	72.5	97.5	64.5	83.5	54.0	71.5	41.7	61.0	46.2	-	12.8
39.0	-	<u>73.5</u>	71.5	73.5	65.5	72.5	57.3	75.5	47.9	66.5	37.3	57.5	46.2	-	8.8
46.0	-	-	<u>53.2</u>	54.7	55.4	54.3	50.6	60.5	41.3	60.5	32.5	53.3	46.2	-	5.0
52.0	-	-	42.7	44.2	<u>48.0</u>	43.6	45.8	49.8	36.5	50.2	28.9	49.2	44.2	-	2.6
59.0	-	-	-	34.6	41.0	34.2	39.7	<u>40.2</u>	32.0	40.4	25.6	40.4	40.1	-	-
65.0	-	-	-	28.2	35.8	27.7	<u>35.2</u>	33.9	28.7	<u>34.3</u>	23.5	34.3	34.1	-	-
72.0	-	-	-	-	-	21.7	30.5	28.1	26.2	28.3	21.2	<u>28.3</u>	28.1	-	-
79.0	-	-	-	-	-	17.0	26.0	23.2	23.5	23.4	19.3	23.4	23.2	-	-
85.0	-	-	-	-	-	-	-	19.7	<u>21.9</u>	20.0	18.1	20.0	<u>19.7</u>	-	-
92.0	-	-	-	-	-	-	-	16.7	19.7	16.9	16.9	16.9	16.4	-	-
98.0	-	-	-	-	-	-	-	14.2	17.5	14.2	<u>15.7</u>	14.2	14.0	-	-
105.0	-	-	-	-	-	-	-	-	-	11.9	14.5	11.9	11.6	-	-
111.0	-	-	-	-	-	-	-	-	-	10.0	13.5	10.0	9.8	-	-
118.0	-	-	-	-	-	-	-	-	-	-	-	8.1	7.9	-	-
124.0	-	-	-	-	-	-	-	-	-	-	-	6.7	6.5	-	-
131.0	-	-	-	-	-	-	-	-	-	-	-	5.5	4.9	-	-
138.0	-	-	-	-	-	-	-	-	-	-	-	-	3.7	-	-
144.0	-	-	-	-	-	-	-	-	-	-	-	-	2.7	-	-


Boom extension sequence															%	
Tele 1	0	45	90	68	0	90	0	60	0	75	0	90	100	0	90	
Tele 2	0	0	0	68	45	90	60	60	80	75	100	90	100	0	0	
Tele 3	0	0	0	0	45	0	60	60	80	75	100	90	100	0	0	
Tele 4	0	0	0	0	45	0	60	60	80	75	100	90	100	0	0	

*) Tele 1 pinned

Duties above 220,000 lb with heavy-duty attachment only

Lifting capacities main boom in 1,000 lb

42,000 lb   **360°** **85%**

Radius ft	Main boom											 OVER REEF		
	42.0 ft	55.5 ft*	69.2 ft*	83.3 ft*	96.8 ft*	115.2 ft	133.5 ft	151.5 ft	164.0 ft	42.0 ft	69.2 ft			
	1,000 lb											1,000 lb		
10.0	310.0	198.0	-	-	-	-	-	-	-	-	-	-	-	-
11.0	292.0	198.0	198.0	-	-	-	-	-	-	-	-	-	-	-
13.0	264.0	198.0	198.0	165.0	77.0	132.0	77.0	-	-	-	-	-	-	-
15.0	237.0	198.0	198.0	164.5	77.0	132.0	77.0	-	-	-	-	-	36.9	33.6
16.0	224.0	198.0	198.0	161.0	77.0	132.0	77.0	83.5	66.0	-	-	-	34.6	31.1
19.0	190.0	183.0	182.0	149.5	77.0	132.0	77.0	83.5	66.0	79.0	41.8	-	28.6	25.3
23.0	152.0	148.5	146.5	134.5	77.0	123.5	76.5	83.5	64.5	79.0	41.8	59.5	22.4	18.9
26.0	127.0	122.5	119.5	121.0	77.0	116.5	73.0	83.5	61.5	78.0	41.8	59.5	19.0	15.4
29.0	104.5	100.0	97.0	99.5	77.0	98.0	69.0	83.5	58.3	75.5	41.8	59.5	15.9	12.4
33.0	-	78.5	76.0	78.0	72.5	77.0	64.5	83.0	54.0	71.5	41.7	58.7	-	9.1
39.0	-	58.1	55.7	57.7	65.0	56.8	57.3	64.0	47.9	63.5	37.3	55.1	-	5.5
46.0	-	-	39.5	41.3	49.5	40.9	50.1	47.5	41.3	47.9	32.5	47.9	-	2.1
52.0	-	-	30.5	32.2	40.2	31.4	40.6	38.2	36.3	38.4	28.9	38.4	-	-
59.0	-	-	-	23.6	32.0	23.2	32.4	30.0	31.7	30.2	25.6	30.2	-	-
65.0	-	-	-	18.7	26.7	17.9	27.2	24.7	27.7	25.0	23.5	25.0	-	-
72.0	-	-	-	-	-	13.1	22.6	19.5	23.0	19.7	20.7	19.7	-	-
79.0	-	-	-	-	-	9.3	18.5	15.5	19.0	15.7	19.0	15.7	-	-
85.0	-	-	-	-	-	-	-	12.7	16.0	12.9	16.4	12.9	-	-
92.0	-	-	-	-	-	-	-	10.1	13.4	10.3	13.8	10.3	-	-
98.0	-	-	-	-	-	-	-	8.2	11.5	8.3	11.8	8.3	-	-
105.0	-	-	-	-	-	-	-	-	-	6.3	9.9	6.1	-	-
111.0	-	-	-	-	-	-	-	-	-	4.7	8.3	4.7	-	-
118.0	-	-	-	-	-	-	-	-	-	-	-	3.3	-	-

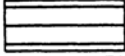
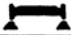
Boom extension sequence


														%	
Tele 1	0	45	90	68	0	90	0	60	0	75	0	90	100	0	90
Tele 2	0	0	0	68	45	90	60	60	80	75	100	90	100	0	0
Tele 3	0	0	0	0	45	0	60	60	80	75	100	90	100	0	0
Tele 4	0	0	0	0	45	0	60	60	80	75	100	90	100	0	0

*) Tele 1 pinned

Duties above 220,000 lb with heavy-duty attachment only

Lifting capacities main boom in 1,000 lb

24,200 lb   **360°** **85%**

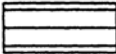
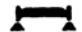
Radius ft	Main boom											 Over rear	
	42.0 ft	55.5 ft*	69.2 ft*	83.3 ft*	96.8 ft*	115.2 ft	133.5 ft	151.5 ft	164.0 ft	42.0 ft	69.2 ft	1,000 lb	
10.0	303.0	198.0	-	-	-	-	-	-	-	-	-	-	-
11.0	287.0	198.0	198.0	-	-	-	-	-	-	-	-	-	-
13.0	257.0	198.0	198.0	165.0	77.0	132.0	77.0	-	-	-	-	-	-
15.0	230.0	198.0	198.0	164.5	77.0	132.0	77.0	-	-	-	-	-	33.1 29.4
16.0	216.0	198.0	198.0	161.0	77.0	132.0	77.0	83.5	66.0	-	-	-	30.9 27.3
19.0	180.5	175.0	173.5	149.5	77.0	132.0	77.0	83.5	66.0	77.0	41.8	-	25.2 21.7
23.0	138.0	133.0	129.5	132.5	77.0	123.0	76.5	83.5	64.5	77.0	41.8	57.3	19.3 15.8
26.0	108.5	103.5	100.5	103.5	77.0	102.0	73.0	83.5	61.5	76.0	41.8	57.3	16.1 12.4
29.0	88.0	84.0	81.0	83.5	77.0	82.5	69.0	83.5	58.3	74.0	41.8	55.2	13.2 9.7
33.0	-	64.5	62.0	64.0	72.0	63.5	64.5	72.0	54.0	70.5	41.7	52.3	6.7
39.0	-	46.1	43.4	45.4	54.4	45.0	54.8	52.5	47.9	52.9	37.3	49.9	3.2
46.0	-	-	29.8	31.8	40.0	31.2	40.6	38.0	41.3	38.4	32.5	38.4	38.0
52.0	-	-	21.8	23.6	31.9	22.7	32.6	29.9	33.2	30.2	28.9	30.2	29.9
59.0	-	-	-	16.3	24.9	15.7	25.6	22.7	26.2	23.2	25.6	23.2	22.9
65.0	-	-	-	12.1	20.3	9.4	21.1	18.1	21.6	18.3	22.1	18.3	18.1
72.0	-	-	-	-	-	7.1	16.8	13.7	17.3	13.9	17.7	13.9	13.7
79.0	-	-	-	-	-	4.3	13.3	10.4	13.7	10.6	14.2	10.6	10.2
85.0	-	-	-	-	-	-	-	8.0	11.5	8.2	12.0	8.2	8.0
92.0	-	-	-	-	-	-	-	5.9	9.2	6.1	9.6	5.9	5.6
98.0	-	-	-	-	-	-	-	4.3	7.6	4.3	7.8	4.3	4.0
105.0	-	-	-	-	-	-	-	-	-	2.6	6.1	2.6	2.2
111.0	-	-	-	-	-	-	-	-	-	-	4.9	-	-

Boom extension sequence													%		
Tele 1	0	45	90	68	0	90	0	60	0	75	0	90	100	0	90
Tele 2	0	0	0	68	45	90	60	60	80	75	100	90	100	0	0
Tele 3	0	0	0	0	45	0	60	60	80	75	100	90	100	0	0
Tele 4	0	0	0	0	45	0	60	60	80	75	100	90	100	0	0

*) Tele 1 pinned

Duties above 220,000 lb with heavy-duty attachment only

Lifting capacities main boom in 1,000 lb

0 lb   360° 85%

Radius ft	Main boom												over rear		
	42.0 ft	55.5 ft*	69.2 ft*	83.3 ft*	96.8 ft*	115.2 ft	133.5 ft	151.5 ft	164.0 ft	42.0 ft	69.2 ft	1,000 lb			
10.0	297.0	198.0	-	-	-	-	-	-	-	-	-	-	-	-	-
11.0	279.0	198.0	198.0	-	-	-	-	-	-	-	-	-	-	-	-
13.0	246.0	198.0	198.0	165.0	77.0	132.0	77.0	-	-	-	-	-	-	-	-
15.0	216.0	197.5	197.0	164.5	77.0	132.0	77.0	-	-	-	-	-	-	24.8	21.1
16.0	201.0	193.5	192.0	161.0	77.0	132.0	77.0	83.5	66.0	-	-	-	-	22.8	19.1
19.0	<u>143.5</u>	<u>138.5</u>	<u>135.0</u>	<u>131.5</u>	77.0	<u>125.0</u>	77.0	83.5	66.0	74.5	41.8	-	-	18.0	14.1
23.0	91.5	86.5	84.0	86.5	77.0	85.5	76.5	83.5	64.5	74.5	41.8	52.9	-	12.9	9.2
26.0	70.0	65.0	62.5	65.0	<u>74.5</u>	64.5	73.0	<u>72.5</u>	61.5	<u>72.5</u>	41.8	52.9	41.8	10.1	6.4
29.0	55.2	50.7	48.0	50.3	60.0	49.8	<u>60.5</u>	58.2	58.3	58.6	41.8	<u>52.9</u>	41.8	7.8	3.9
33.0	-	37.5	34.9	37.0	45.8	36.6	46.7	43.9	<u>47.6</u>	44.3	41.6	41.9	<u>38.3</u>	-	-
39.0	-	25.2	23.2	25.0	32.9	24.1	33.4	31.0	34.1	31.4	<u>34.6</u>	31.3	30.8	-	-
46.0	-	-	14.2	15.8	23.3	15.3	23.7	21.3	24.6	21.7	25.0	21.7	21.5	-	-
52.0	-	-	9.0	10.7	17.8	10.3	18.3	16.0	19.1	16.3	19.6	16.3	16.1	-	-
59.0	-	-	-	5.9	13.2	5.1	13.7	11.5	14.3	11.7	15.0	11.7	11.2	-	-
65.0	-	-	-	2.7	10.4	-	10.8	8.6	11.5	8.8	11.9	8.8	8.2	-	-
72.0	-	-	-	-	-	-	8.2	5.3	8.6	5.5	8.8	5.5	5.1	-	-
79.0	-	-	-	-	-	-	5.8	3.0	6.3	3.2	6.7	3.2	2.7	-	-
85.0	-	-	-	-	-	-	-	4.7	-	4.9	-	-	-	-	-
92.0	-	-	-	-	-	-	-	2.8	-	3.2	-	-	-	-	-

Boom extension sequence														%	
Tele 1	0	45	90	68	0	90	0	60	0	75	0	90	100	0	90
Tele 2	0	0	0	68	45	90	60	60	80	75	100	90	100	0	0
Tele 3	0	0	0	0	45	0	60	60	80	75	100	90	100	0	0
Tele 4	0	0	0	0	45	0	60	60	80	75	100	90	100	0	0

*) Tele 1 pinned

Duties above 220,000 lb with heavy-duty attachment only

Notes to lifting capacity

Lifting capacities do not exceed 75/85% of tipping load

Weight of hook blocks and slings are part of the load, and are to be deducted from the capacity ratings

Crane operation is permissible up to a

wind speed of

32 ft/s

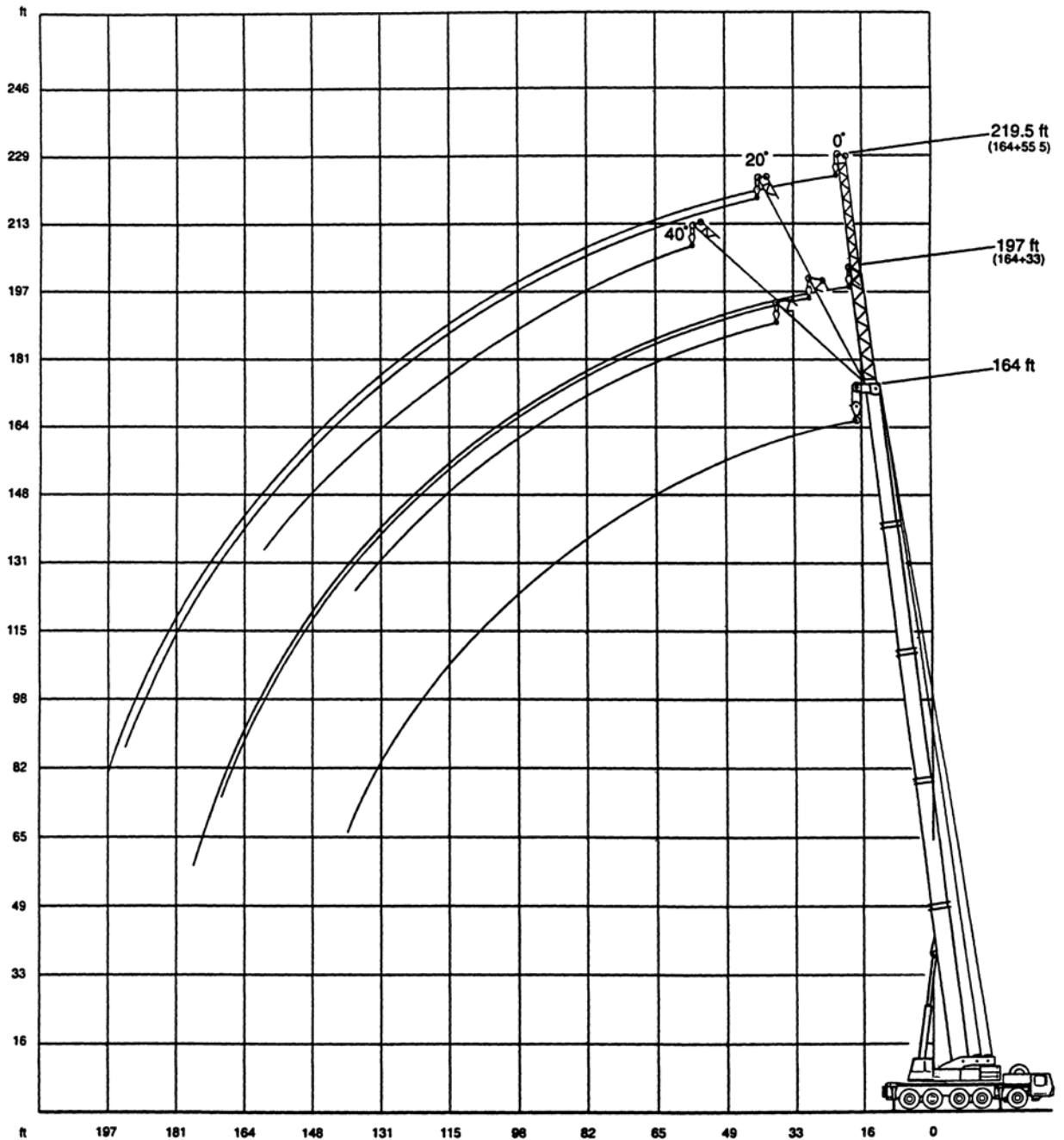
Consult operation manual for further details on wind speed

All capacities above the parting line are based on structural strength Capacities below the parting line are based on machine stability

Crane operation subject to computer charts, only!

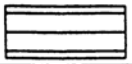
For crane operation consult operation manual first!

Working range swing-away jib

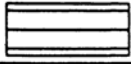


Lifting capacities swing-away jib in 1,000 lb

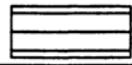
Main boom: 164 ft

103,500 lb  **360° 85%**

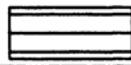
Radius ft	Swing-away jib					
	33.0 ft			55.5 ft		
	0°	20°	40°	0°	20°	40°
	1,000 lb			1,000 lb		
26.0	24.9	-	-	-	-	-
29.0	24.9	-	-	-	-	-
33.0	24.9	-	-	18.7	-	-
39.0	24.9	20.9	-	18.7	-	-
46.0	24.6	20.9	-	18.7	-	-
52.0	24.4	20.9	18.7	18.5	13.2	-
59.0	24.0	20.9	18.7	18.3	13.2	-
65.0	23.4	20.9	18.7	18.0	13.2	10.5
72.0	22.7	20.5	18.7	17.8	13.2	10.5
79.0	20.8	19.3	18.2	17.6	13.2	10.5
85.0	19.4	18.3	17.8	16.7	13.2	10.5
92.0	18.2	16.9	17.1	15.8	12.5	10.5
98.0	17.2	15.9	16.3	15.0	11.9	10.5
105.0	16.3	14.7	15.2	14.1	11.4	10.3
111.0	15.5	13.5	14.2	13.5	11.0	10.3
118.0	14.5	12.3	13.0	12.5	10.5	10.3
124.0	13.7	11.3	12.0	11.9	10.1	10.1
131.0	12.3	10.1	11.0	11.2	9.7	10.1
138.0	10.7	9.2	10.1	10.5	9.2	9.9
144.0	9.3	8.6	-	9.9	8.8	9.7
151.0	7.9	7.9	-	9.2	8.3	9.2
157.0	6.9	7.3	-	8.4	7.9	8.8
164.0	5.7	6.1	-	7.5	7.4	-
170.0	4.9	5.1	-	6.4	7.0	-
177.0	3.7	-	-	5.5	6.4	-
184.0	-	-	-	4.8	5.4	-
190.0	-	-	-	4.0	4.4	-
197.0	-	-	-	3.2	-	-

59,500 lb  **360° 85%**

Radius ft	Swing-away jib					
	33.0 ft			55.5 ft		
	0°	20°	40°	0°	20°	40°
	1,000 lb			1,000 lb		
26.0	24.9	-	-	-	-	-
29.0	24.9	-	-	-	-	-
33.0	24.9	-	-	18.7	-	-
39.0	24.9	20.9	-	18.7	-	-
46.0	24.6	20.9	-	18.7	-	-
52.0	24.4	20.9	18.7	18.5	13.2	-
59.0	24.0	20.9	18.7	18.3	13.2	-
65.0	23.4	20.9	18.7	18.0	13.2	10.5
72.0	22.7	20.5	18.7	17.8	13.2	10.5
79.0	20.8	19.3	18.2	17.6	13.2	10.5
85.0	19.2	18.3	17.8	16.7	13.2	10.5
92.0	16.0	16.9	17.1	15.8	12.5	10.5
98.0	13.4	15.1	16.3	15.0	11.9	10.5
105.0	10.8	12.3	13.4	12.7	11.4	10.3
111.0	8.9	10.3	11.2	10.9	11.0	10.3
118.0	7.0	8.1	9.0	9.0	10.5	10.3
124.0	5.6	6.5	7.4	7.6	9.3	10.1
131.0	4.0	5.1	5.5	6.0	7.7	9.0
138.0	2.6	3.7	3.9	4.8	6.1	7.4
144.0	-	2.2	-	3.6	5.1	6.0
151.0	-	-	-	2.4	3.7	4.8
157.0	-	-	-	-	2.7	3.6
164.0	-	-	-	-	-	-
170.0	-	-	-	-	-	-
177.0	-	-	-	-	-	-
184.0	-	-	-	-	-	-
190.0	-	-	-	-	-	-
197.0	-	-	-	-	-	-

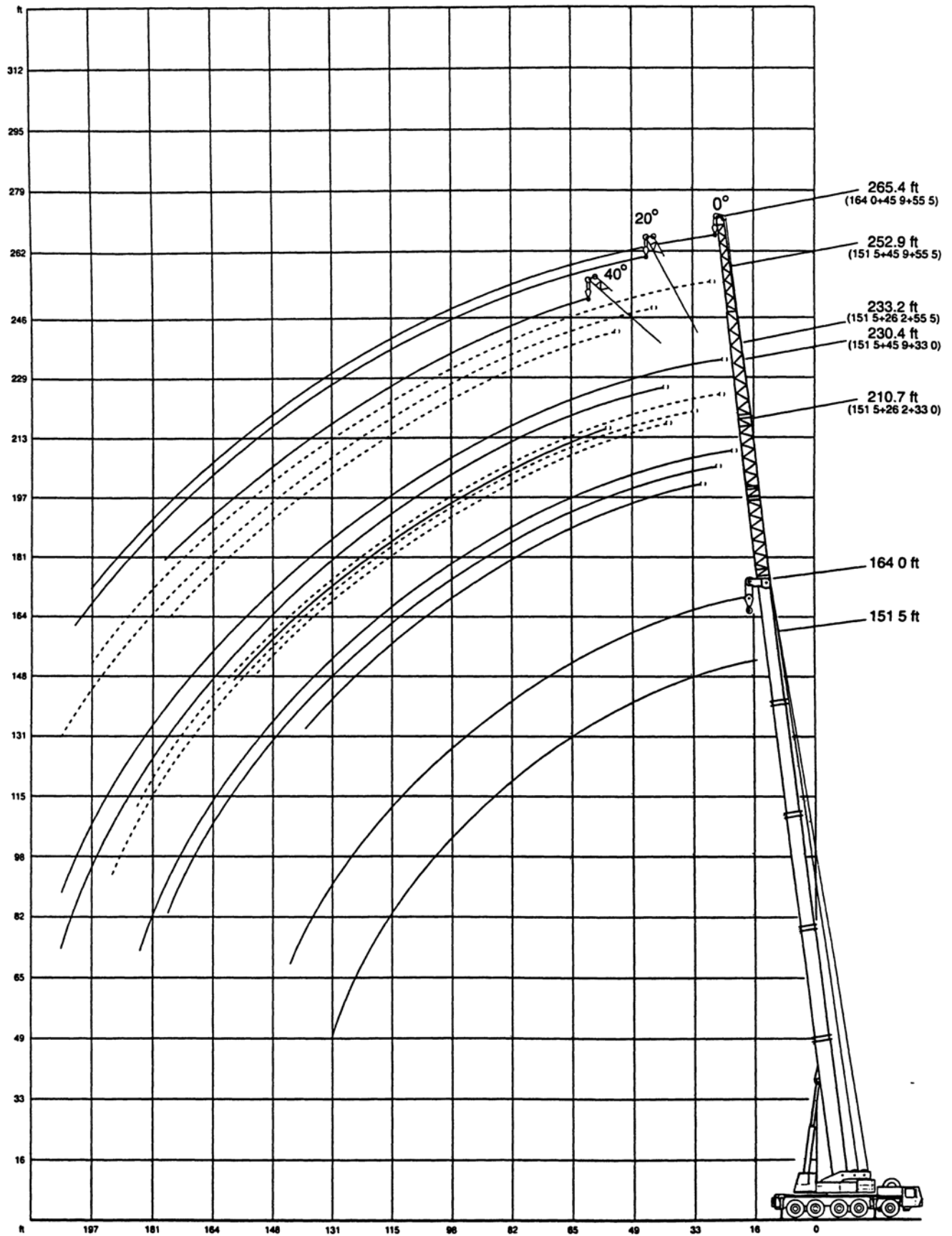
42,000 lb  **360° 85%**

Radius ft	Swing-away jib					
	33.0 ft			55.5 ft		
	0°	20°	40°	0°	20°	40°
	1,000 lb			1,000 lb		
26.0	24.9	-	-	-	-	-
29.0	24.9	-	-	-	-	-
33.0	24.9	-	-	18.7	-	-
39.0	24.9	20.9	-	18.7	-	-
46.0	24.6	20.9	-	18.7	-	-
52.0	24.4	20.9	18.7	18.5	13.2	-
59.0	24.0	20.9	18.7	18.3	13.2	-
65.0	23.4	20.9	18.7	18.0	13.2	10.5
72.0	20.5	20.5	18.7	17.8	13.2	10.5
79.0	16.4	18.8	18.2	17.5	13.2	10.5
85.0	13.3	15.5	17.0	14.9	13.2	10.5
92.0	10.5	12.5	13.8	12.2	12.5	10.5
98.0	8.3	10.0	11.4	10.0	11.9	10.5
105.0	6.1	7.7	8.8	7.9	10.8	10.3
111.0	4.5	5.8	7.0	6.5	8.9	10.3
118.0	2.6	3.9	5.1	5.0	7.0	8.8
124.0	-	2.7	3.4	3.6	5.6	7.2
131.0	-	-	2.0	2.2	4.0	5.5
138.0	-	-	-	-	3.0	3.9
144.0	-	-	-	-	-	2.7

24,200 t  **360° 85%**

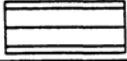

Radius ft	Swing-away jib					
	33.0 ft			55.5 ft		
	0°	20°	40°	0°	20°	40°
	1,000 lb			1,000 lb		
26.0	24.9	-	-	-	-	-
29.0	24.9	-	-	-	-	-
33.0	24.9	-	-	18.7	-	-
39.0	24.9	20.9	-	18.7	-	-
46.0	24.6	20.9	-	18.7	-	-
52.0	24.4	20.9	18.7	18.5	13.2	-
59.0	21.4	20.9	18.7	18.3	13.2	-
65.0	16.9	19.9	18.7	17.6	13.2	10.5
72.0	12.8	15.5	18.0	13.9	13.2	10.5
79.0	9.3	11.8	14.2	10.6	13.1	10.5
85.0	7.1	9.3	11.1	8.2	11.9	10.5
92.0	5.0	7.0	8.5	6.1	9.4	10.5
98.0	3.4	5.2	6.3	4.5	7.6	9.9
105.0	-	3.3	4.1	3.0	5.7	7.9
111.0	-	-	2.5	-	4.1	6.3
118.0	-	-	-	-	2.6	4.4
124.0	-	-	-	-	-	3.4
131.0	-	-	-	-	-	-
138.0	-	-	-	-	-	-
144.0	-	-	-	-	-	-

Working range special main boom extension + 26.2/45.9 ft insert



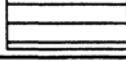

Lifting capacities special main boom extension

151.5 ft main boom + 26.2 ft insert

103,500 lb   360° 85%

Radius ft	Extension					
	33.0 ft			55.5 ft		
	0°	20°	40°	0°	20°	40°
	1,000 lb			1,000 lb		
29.0	20.9	-	-	-	-	-
33.0	20.9	-	-	14.5	-	-
39.0	20.9	-	-	14.5	-	-
46.0	20.9	17.4	-	14.5	-	-
52.0	19.9	17.4	14.7	14.5	-	-
59.0	18.9	16.5	14.7	14.5	11.6	9.2
65.0	18.1	15.7	14.1	14.1	11.6	9.2
72.0	17.2	14.7	13.4	13.4	11.2	9.2
79.0	16.2	13.8	12.7	12.7	10.5	9.2
85.0	15.6	13.2	12.3	12.3	10.1	9.0
92.0	14.7	12.5	11.8	11.6	9.6	8.5
98.0	14.1	12.1	11.4	11.2	9.2	8.3
105.0	13.4	11.4	11.0	10.8	9.0	8.1
111.0	12.8	11.0	10.6	10.3	8.6	7.7
118.0	12.1	10.5	10.1	9.9	8.3	7.4
124.0	11.5	10.1	9.7	9.5	7.9	7.2
131.0	10.8	9.7	9.4	9.0	7.7	7.0
138.0	9.8	9.2	9.0	8.5	7.4	6.8
144.0	8.6	8.8	-	8.3	7.2	6.6
151.0	7.2	8.1	-	7.9	7.0	6.3
157.0	6.2	6.9	-	7.5	6.6	6.1
164.0	5.2	5.7	-	6.8	6.3	-
170.0	4.4	4.9	-	6.0	6.1	-
177.0	3.5	3.9	-	5.0	5.9	-
184.0	2.8	-	-	4.3	5.0	-
190.0	-	-	-	3.5	4.2	-
197.0	-	-	-	2.8	3.5	-
203.0	-	-	-	2.2	2.9	-

151.5 ft main boom + 45.9 ft insert

103,500 lb   360° 85%

Radius ft	Extension								
	33.0 ft			55.5 ft			55.5 ft*		
	0°	20°	40°	0°	20°	40°	0°	20°	40°
	1,000 lb			1,000 lb			1,000 lb		
29.0	-	-	-	-	-	-	-	-	-
33.0	14.9	-	-	-	-	-	-	-	-
39.0	14.9	-	-	11.4	-	-	6.6	-	-
46.0	14.3	13.0	-	11.4	-	-	6.6	-	-
52.0	13.7	13.0	-	11.2	-	-	6.6	-	-
59.0	13.0	12.1	10.8	10.8	8.8	-	6.6	-	-
65.0	12.6	11.5	10.4	10.4	8.8	-	6.6	6.6	-
72.0	11.9	10.8	9.7	9.9	8.6	6.8	6.6	6.6	-
79.0	11.4	10.1	9.2	9.6	8.3	6.8	6.6	6.6	5.9
85.0	10.8	9.7	8.8	9.2	8.1	6.6	6.6	6.6	5.9
92.0	10.3	9.0	8.3	8.8	7.7	6.3	6.6	6.6	5.9
98.0	9.9	8.6	7.9	8.6	7.5	6.1	6.6	6.6	5.9
105.0	9.4	8.1	7.7	8.1	7.2	6.1	6.6	6.6	5.7
111.0	9.0	7.7	7.3	7.7	6.8	5.9	6.6	6.4	5.5
118.0	8.6	7.4	7.0	7.4	6.6	5.7	6.6	6.1	5.2
124.0	8.2	7.1	6.6	7.1	6.2	5.5	6.6	5.9	5.0
131.0	7.7	6.8	6.4	6.8	5.9	5.2	6.6	5.7	5.0
138.0	7.2	6.3	6.1	6.3	5.7	5.0	6.3	5.5	4.8
144.0	6.8	6.1	5.7	6.1	5.3	4.8	6.1	5.3	4.6
151.0	6.6	5.9	5.5	5.7	5.0	4.8	5.7	5.0	4.6
157.0	6.2	5.5	-	5.5	4.6	4.6	5.5	4.8	4.4
164.0	5.0	5.2	-	5.2	4.4	4.4	5.0	4.8	4.4
170.0	4.2	4.8	-	4.8	4.2	4.2	4.8	4.6	4.2
177.0	3.3	3.7	-	4.6	3.9	3.9	4.4	4.4	4.1
184.0	2.6	3.0	-	3.9	3.7	-	3.7	4.1	-
190.0	-	2.2	-	3.3	3.5	-	2.9	3.9	-
197.0	-	-	-	2.6	3.2	-	2.1	3.0	-
203.0	-	-	-	-	2.6	-	-	2.4	-

*) 164 0 ft main boom