



STINGER 25-92M

25T Lifting capacity

Boom truck crane



STINGER

25-92M



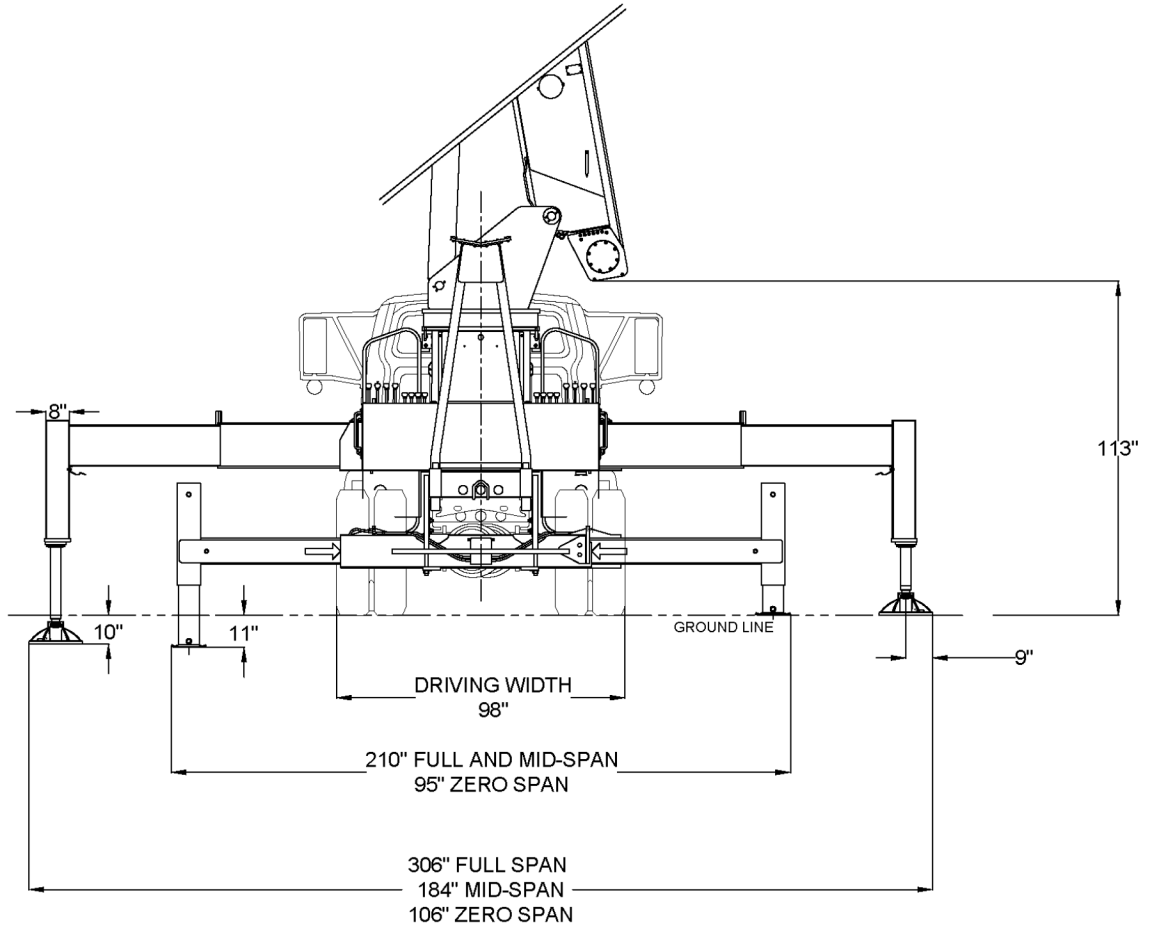
Features of the STINGER 25-92M:

- 25 US Ton @ 5ft
- 92-foot full power main boom
- 102-foot tip height
- 26-44 ft optional two-piece jib
- 146 ft maximum tip height with 44 ft jib
- M-Style multi-position outriggers
- Electronic rated capacity indicator

DIMENSIONS

STINGER 25-92M

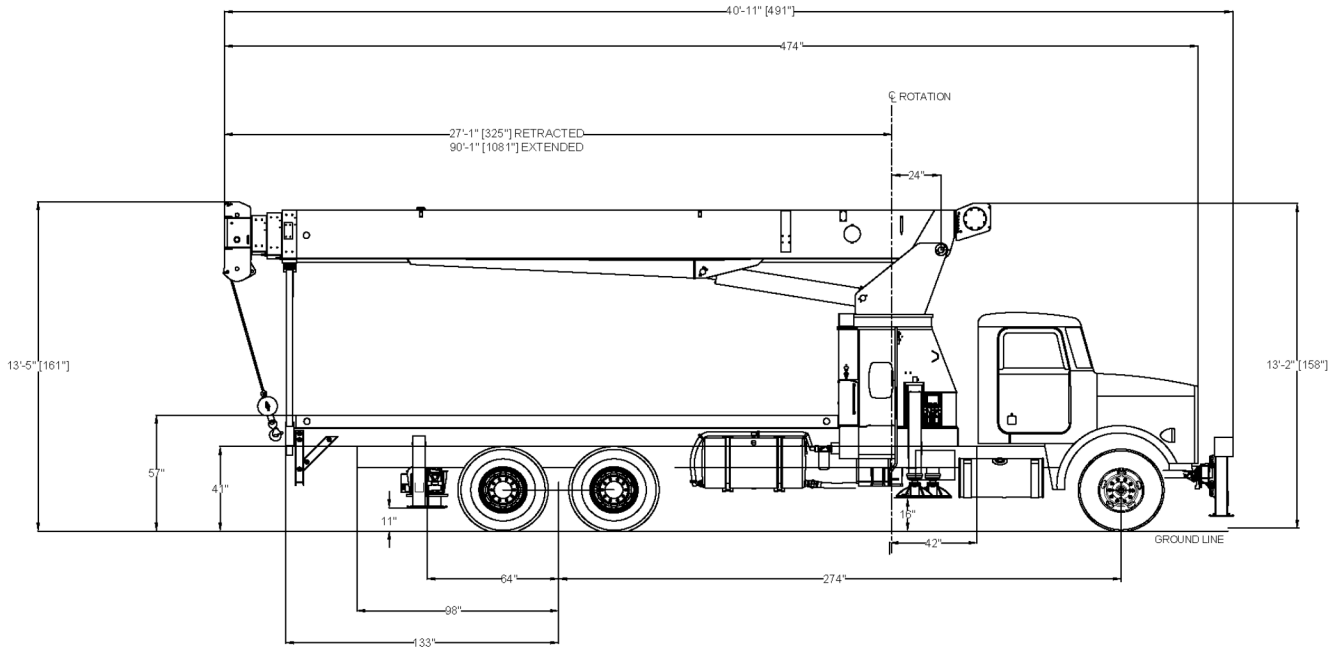
Footprint of outrigger positions



DIMENSIONS

STINGER 25-92M

Road layout and weights



Need mounted axle weights

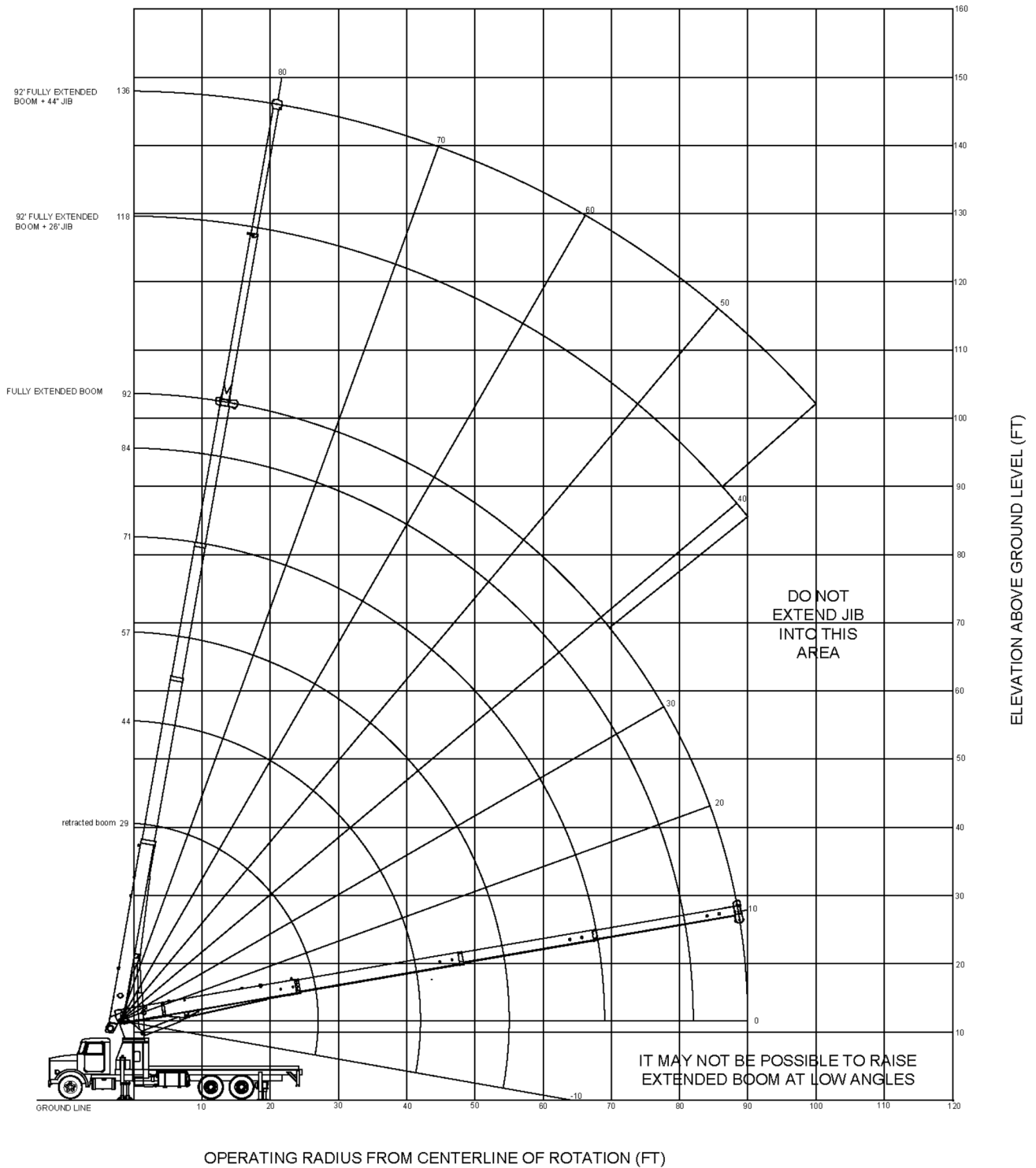
Mounting Specifications:

Gross Vehicle Weight Rating (GVWR)	60,000 lb
Front Axle Weight Rating	20,000 lb
Rear Axle Weight Rating	40,000 lb
Wheelbase	275 in
Afterframe	130 in
Cab to Axle	192 in
RBM per Frame Rail	4,500,000 lb/in
Frame Section Modulus	38 in ³
Crane Weight (Base Machine)	29,000 lb

RANGE DIAGRAM

STINGER 25-92M

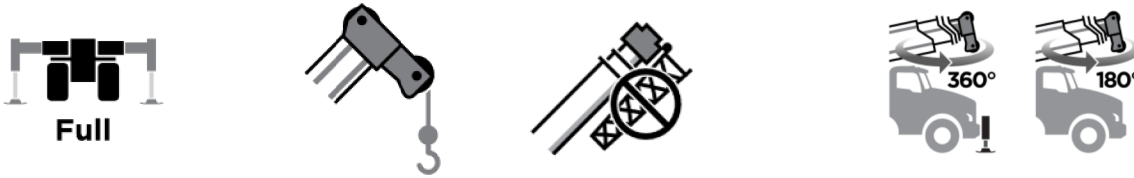
Outriggers fully extended



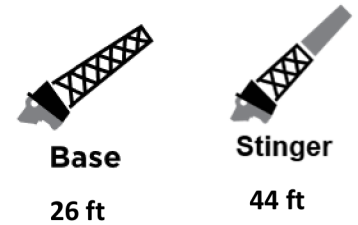
LOAD CHART

STINGER 25-92M

Main Boom 360°



		Standard: ASME B30.5					
		Boom length in feet					
		29	44	57	71	84	92
Radius in feet	5	50,000					
	8	38,550	16,700				
	10	34,700	16,700	16,850			
	12	31,450	16,700	16,850			
	14	28,700	16,700	16,850	16,800		
	16	26,300	16,700	16,850	15,700	13,850	
	20	21,900	16,700	16,150	13,050	11,450	10,900
	25	16,150	16,500	13,400	10,700	9,400	8,850
	30		12,800	11,450	9,050	7,850	7,300
	35		10,200	9,900	7,800	6,650	6,050
	40		8,250	8,350	6,750	5,650	5,050
	45			6,900	5,900	4,850	4,300
	50			5,700	5,250	4,150	3,650
	55				4,650	3,650	3,150
	60				4,050	3,150	2,700
	65				3,400	2,750	2,350
	70					2,400	2,000
75					2,150	1,750	
80					1,900	1,500	
85						1,300	
90						1,050	
0° Capacity		7,500	4,000	1,225	1,100	650	550



Loaded Boom Angle	Base		Stinger	
	26 ft	44 ft	26 ft	44 ft
80°	8,325	3,125		
78°	4,925	2,825		
75°	4,325	2,525		
70°	3,225	2,025		
65°	2,325	1,525		
60°	1,525	1,125		
55°	1,025	725		
50°	725	425		

This chart does not include a deduction for a stowed jib.

Charts are also available for mid-span and retracted outrigger positions.

Front stabilizer required for 360° operation

Notes to lifting capacity

Lifting capacities do not exceed 85% of tipping load. Weight of hook blocks and slings are part of the load and are to be deducted from the capacity ratings. Consult operation manual for further details.

The data published herein is intended as a guide only and shall not be construed to warrant applicability for lifting purposes. Crane operation is subject to the computer charts and operation manual, both supplied with the crane.

Boom, jib and rotation

Five-section full power mechanically synchronized “double keel” telescopic boom		
Boom length	Retracted	29 ft
	Extended	92 ft
Boom maximum tip height		102 ft
Boom elevation angle range (min / max)		-8° / 80°
Boom extend / retract speed		84/52Sec
Boom up / down speed		34/30 Sec
Boom head		Quick reeving
370° non-continuous rotation		
Hydraulically driven double planetary reduction gear drive		1 rev/min
Optional		
Continuous rotation		360°
Two-speed winch		
Two-piece manual pull-out jib		26 / 44 ft
Maximum tip height with extended jib		146 ft
1-sheave hook block with latch		17.5 USt
2-sheave hook block with latch		25 USt
Swivel ball with latch		8 USt

Main and aux hoist, rope, and hook

Combined flow winch	Low Speed	High Speed
First layer (no load)	90 ft/min	204 ft/min
Fifth layer (no load)	119 ft/min	271 ft/min
Line pull	Low Speed	High Speed
First layer (no load)	11,850 lb	5,530 lb
Fifth layer (no load)	8,900 lb	4,170 lb
Permissible line pull		6,720 lb
Average breaking strength		33,600 lb
Standard rope		9/16" 315 ft
37 x7 Combined filler Wire Strand Core; Right hand Lang Lay; EEIPS (2160 Mpa); .84 lbs / inch		

Control Station

Dual-side, stand-up controls with foot throttle pedal

Console includes:

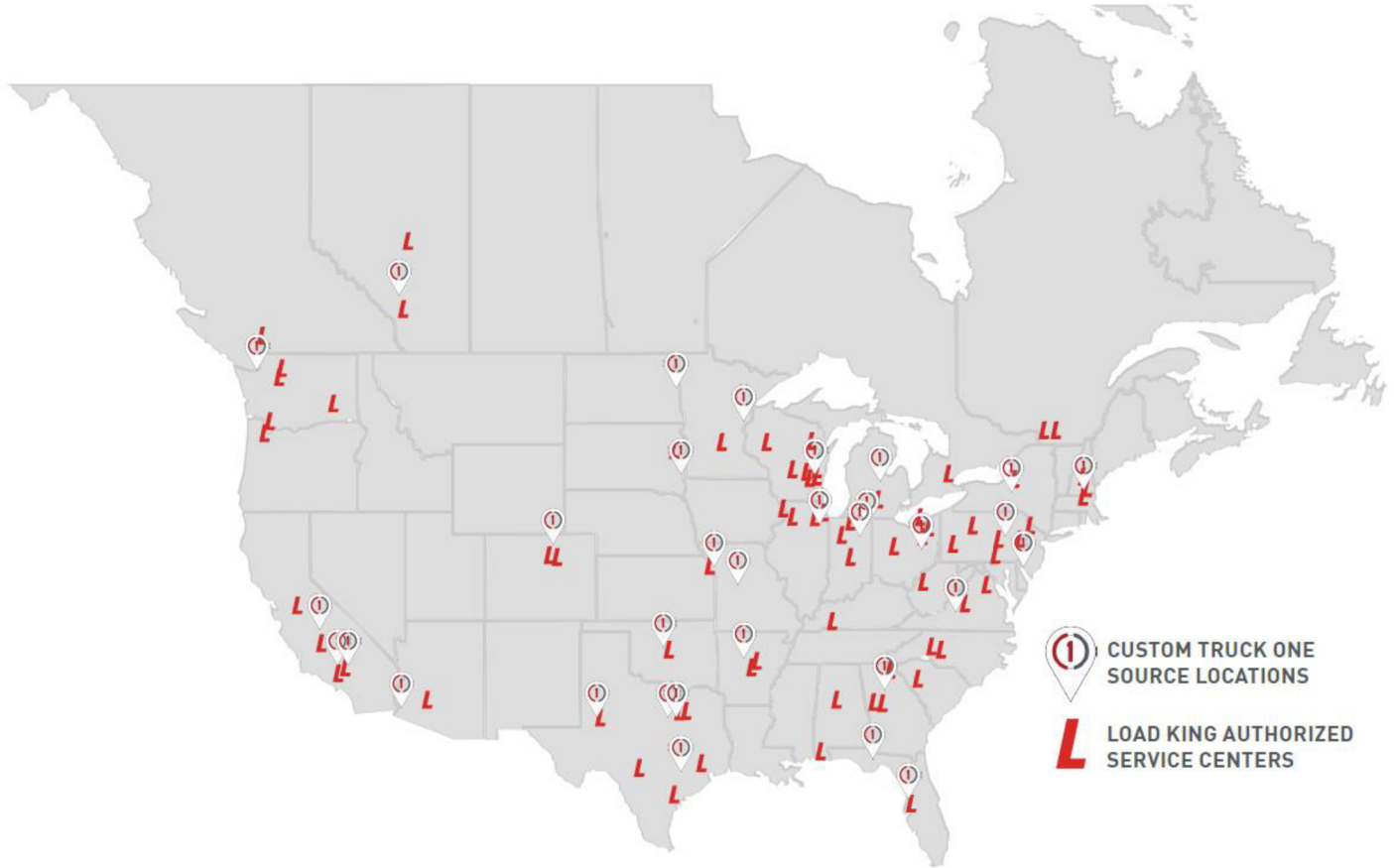
- Four single-axis control levers for crane functions
- Mechanical valve controls (burst of speed on winch lever)
- Controls for main outriggers and rear stabilizers start / stop and signal horn
- Bubble level and high hydraulic temperature warning light

Electronic rated capacity indicator with color display

Outriggers

M-style, Multi-position out and down outrigger system		Center of pad
Fully Extended	Front:	24'
	Rear:	16' 6"
	Front to back (all spans):	19' 2"
Mid Span	Front:	15' 10"
	Rear:	16' 6"
Fully Retracted	Front:	7' 4"
	Rear:	6' 11"

SERVICE LOCATIONS



1 CUSTOM TRUCK ONE
SOURCE LOCATIONS

L LOAD KING AUTHORIZED
SERVICE CENTERS

CONTACT US

24/7 Call Center, staffed in Kansas City, MO

833-281-7911

Parts questions:

833-PARTSLK (833-727-8755)

partsupport@loadkingmfg.com

Parts orders:

store.loadkingmfg.com

Warranty:

cranewarranty@loadkingmfg.com

All our new cranes are backed by an industry-leading 3-year basic and 5-year structural warranty.

www.loadkingmfg.com

